



GRAIN + BIAS

Milliken

D/LUX

LUXURY DEMATERIALIZED

GRAIN + BIAS

Grain + Bias seeks to redefine practical comfort in modern workspaces while still paying homage to the nostalgic comforts we hold dear. Inspired by fundamental truths like the familiarity of home, the solace found in handcrafted art, and the beautiful imperfections of the reverse side of embroidery work, this collection melds these ideals into one functional, approachable design perspective. With Grain + Bias, craft efficient, professional workspaces without losing the warm securities of a more heartening frame of mind.



Scan to explore the collection story.



THE D/LUX SERIES

LUXURY DEMATERIALIZED

We believe people everywhere deserve a safer and healthier environment. We're part of a worldwide creative collective, composed of designers who are passionate about environmental sustainability. Introducing the D/LUX series of carpets with reduced embodied carbon.



INNOVATIVE USE OF YARN SYSTEM
AND TUFTING TECHNOLOGY



USES LESS RAW MATERIAL;
REDUCES EMBODIED CARBON



ACOUSTIC TECHNOLOGY
REDUCES IN-ROOM NOISE



RATED FOR SEVERE
TRAFFIC AREAS

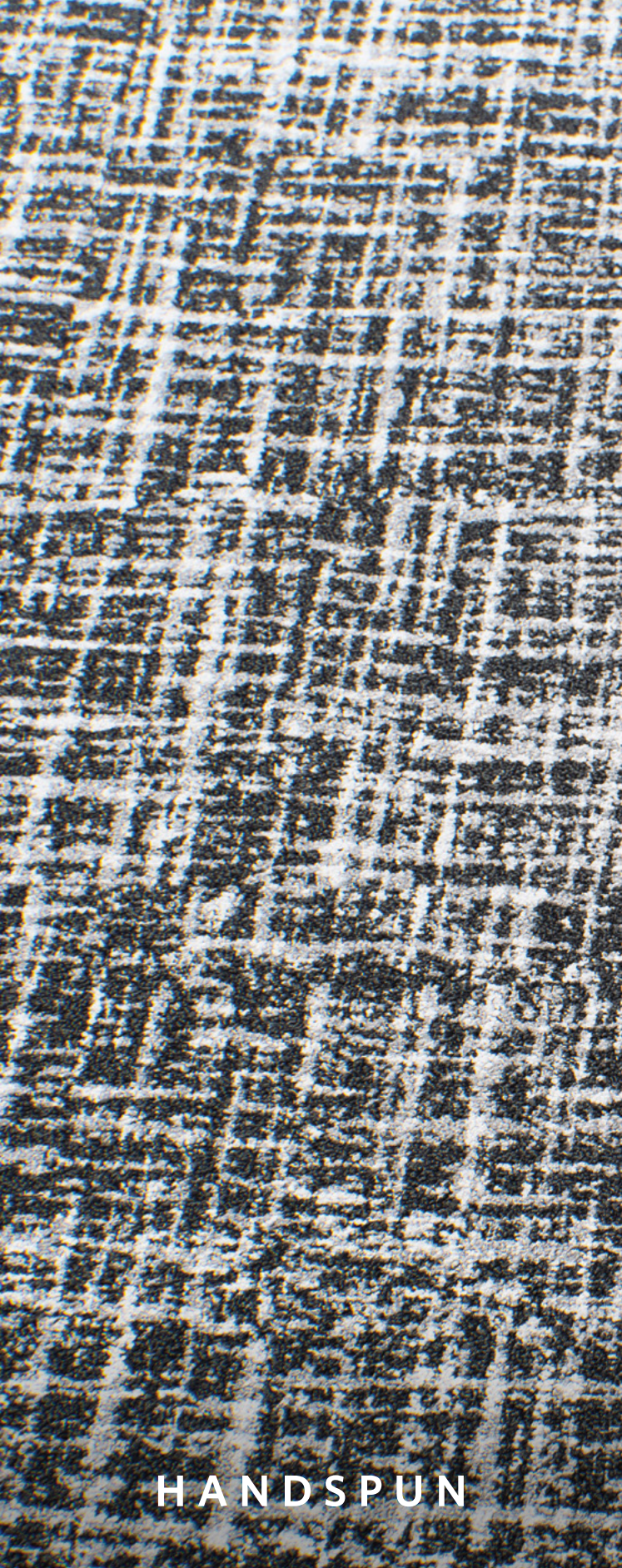


BEAUTIFUL FLOORSCAPES WITH A LOWER CARBON FOOTPRINT

With the Grain + Bias collection, we devised a way to use our yarn system and tufting technology to create a luxurious appearance while using less raw material. Same luxury carpet. Same high performance rating.



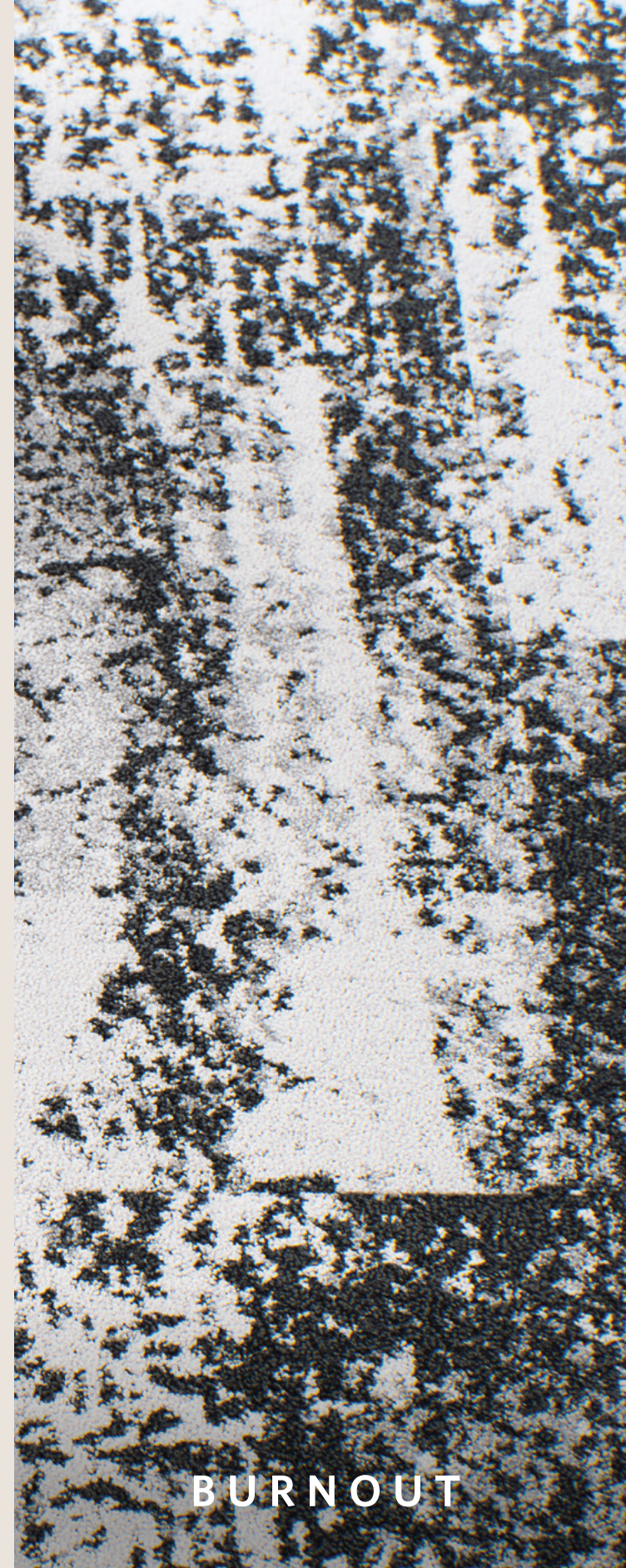
Scan to watch the
D/LUX video.



HANDSPUN



NEEDLEWORK



BURNOUT



POETIC + IMPERFECTIONS

Featuring 3 patterns—all displaying a uniquely handcrafted aesthetic—Grain + Bias offers a modern, functional approach to floorscape design while still capturing the ambiance and appeal of cozier settings.



INDIVIDUAL SPACE + CLASSIC COMFORTS

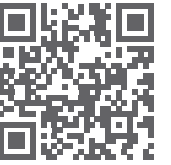


This design-forward collection delivers superior performance capabilities, built to withstand the impact of high-traffic areas. Alongside noise-mitigating properties, Grain + Bias champions long-lasting, space-enhancing products.

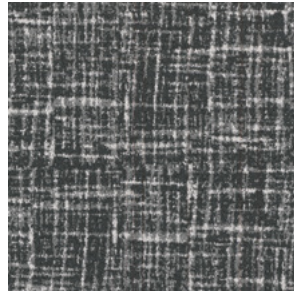
GRAIN + BIAS

COLORLINE

Scan to explore the product catalog.



HANDSPUN



Resist HDS180



Binding HDS6



Freehand HDS153



Purl HDS174



Momento HDS258



Interwoven HDS96

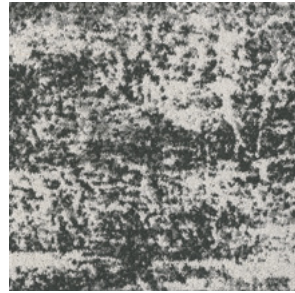


Seam HDS118



Tightknit HDS13

NEEDLEWORK



Resist NDL180



Binding NDL6



Freehand NDL153



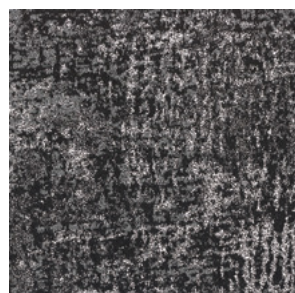
Purl NDL174



Momento NDL258



Interwoven NDL96

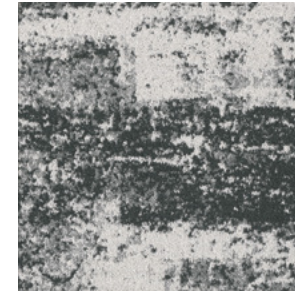


Seam NDL118

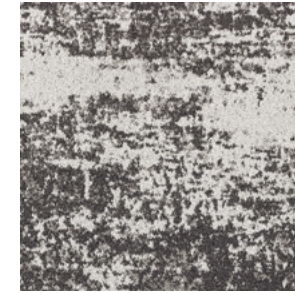


Tightknit NDL13

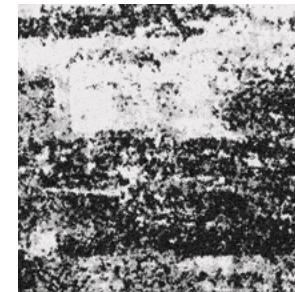
BURNOUT



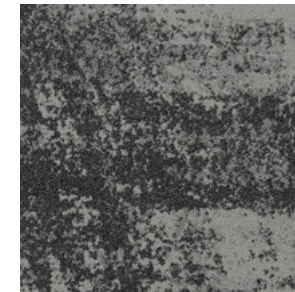
Resist BRN180



Binding BRN6



Freehand BRN153



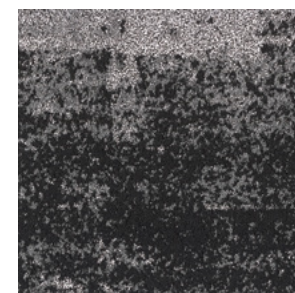
Purl BRN174



Momento BRN258



Interwoven BRN96



Seam BRN118



Tightknit BRN13





GRAIN + BIAS

Handspun / Needlework / Burnout

Construction
Tufted, Textured Loop

Tile Size
50 cm x 50 cm
(19.7" x 19.7")

Yarn Type
Thrive® matter by
Universal Fibers®

**Stain Resist / Soil
Release**
StainSmart®

**Nominal Total
Thickness**
0.31" (7.9 mm)

**Average Density
(Finished)**
Handspun: 5,752
Needlework: 5,170
Burnout: 5,435

Standard Backing
PVC-Free WellBAC®
Comfort Cushion
Available with TractionBack®

**Texture Appearance
Retention Rating (TARR)**
Severe Traffic End-Use
Applications

**Recommended
Installation Method(s)**



SUSTAINABLE FEATURES

Grain + Bias is manufactured with PVC-Free WellBAC® Comfort cushion backing, and is certified NSF-140 Gold. **Grain + Bias** is also available with our NSF-140 Platinum backing option. All Milliken modular carpets carry Environmental Product Declarations and Health Product Declarations, which contribute to LEED certification.



M/PACT™ CARBON NEUTRAL PROGRAM

TRACTIONBACK

Simplify your modular installation with Milliken's patented TractionBack®, an innovative backing system that is faster, more cost efficient, and environmentally superior to wet adhesives and peel-and-stick carpet tile.

SHOWN ON THE COVER

(Front) Needlework in Interwoven NDL96. Ashlar.
(Back) Needlework in Seam. NDL118. Ashlar.

Images in this brochure and architect folder are approximate for color and pattern scale. Please use actual carpet samples to make your final selections.

Scan to explore the collection story



Milliken™