



缙薇雅集 WARP & WEFT

In Stitches / Threaded Layer / Woven Color

Milliken

缇薇雅集

WARP & WEFT

—

Warp & Weft 系列礼赞织物艺术的永恒魅力，
在传统与现代之间编织出精致优雅的图案。
汲取经纬交错的灵感，此系列以细腻的纹理、
层次与流动感，为空间注入深邃而隽永的美学韵律。



IN STITCHES

—
细针密缝，勾勒精妙工艺，织就一幅流畅而富有质感的纹理画面。

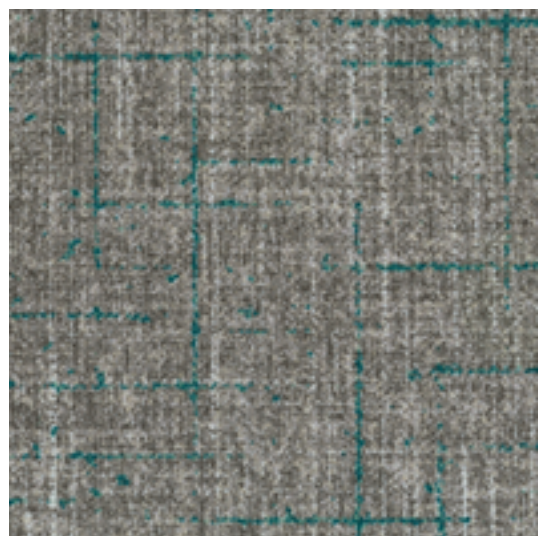


Camel
ISC218-44
monolithic installation



THREADED LAYER

—
线迹交叠，缝饰的深度赋予设计丰富的触感，仿若织物间交错生息。

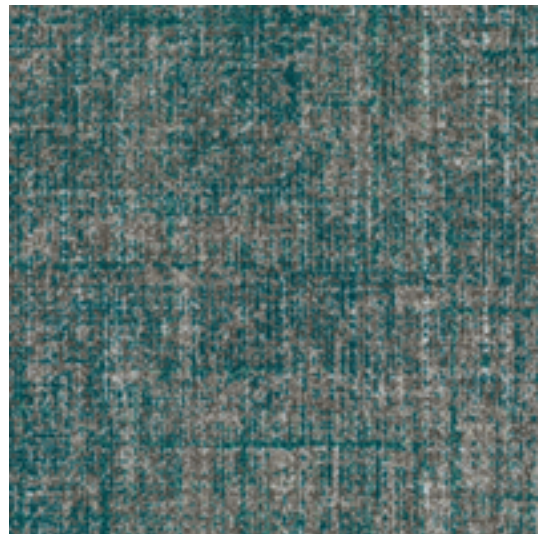


Camel with Seafoam
THL201-218-44
monolithic installation



WOVEN COLOR

—
色彩交织，点缀纱线于经纬之间，流动的光影映照织机运转的灵动韵律。



Camel with Seafoam
WOC201-218-44
monolithic installation



颜色 COLORLINE

In Stitches



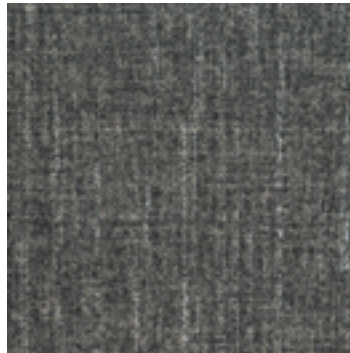
ISC208-121
Undertone



ISC218-44
Camel



ISC235-234
Wool Blend



ISC235-254
Baked Beige



ISC152-180
Dove

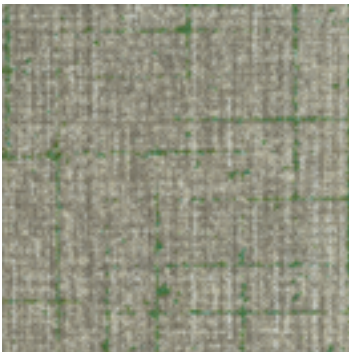


ISC6-153
Tweed Coat

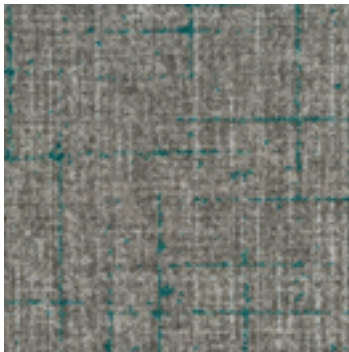


ISC209-118
Blackened

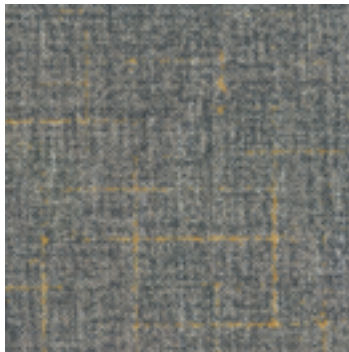
Threaded Layer



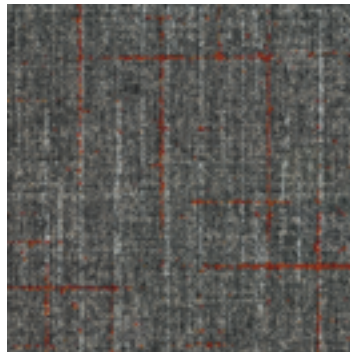
THL162-208-121
Undertone with Sage



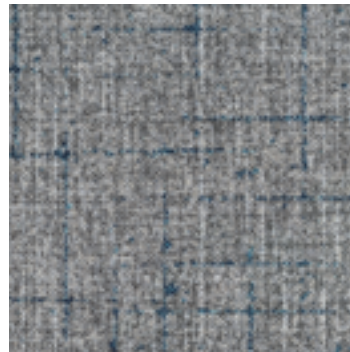
THL201-218-44
Camel with Seafoam



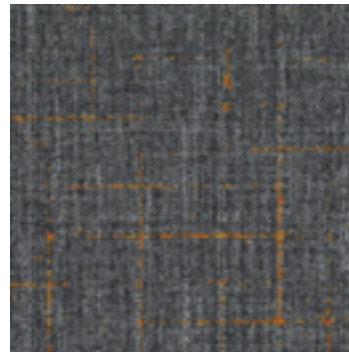
THL231-235-234
Wool Blend with Ochre



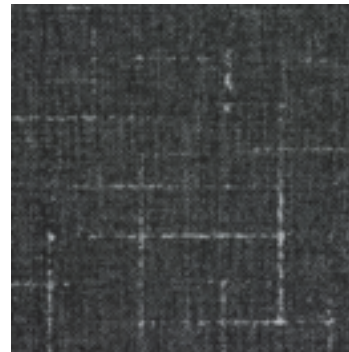
THL191-235-254
Baked Beige with Brick Red



THL196-152-180
Dove with Midnight Blue



THL189-6-153
Tweed Coat with Sienna

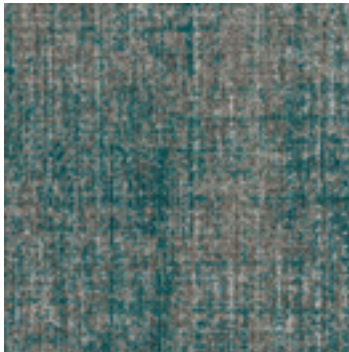


THL265-209-118
Blackened with White

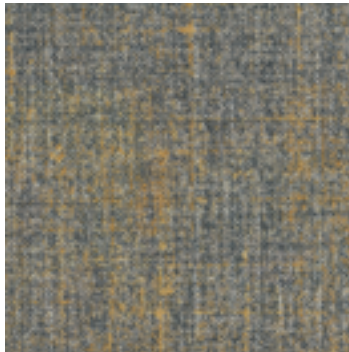
Woven Color



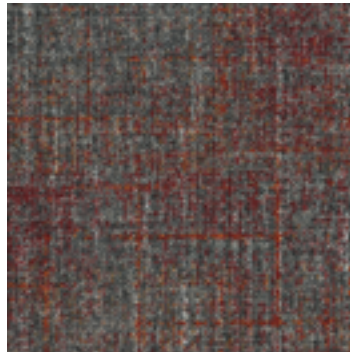
WOC162-208-121
Undertone with Sage



WOC201-218-44
Camel with Seafoam



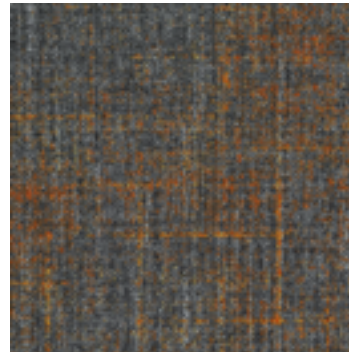
WOC231-235-234
Wool Blend with Ochre



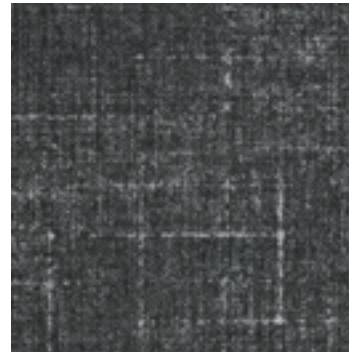
WOC191-235-254
Baked Beige with Brick Red



WOC196-152-180
Dove with Midnight Blue



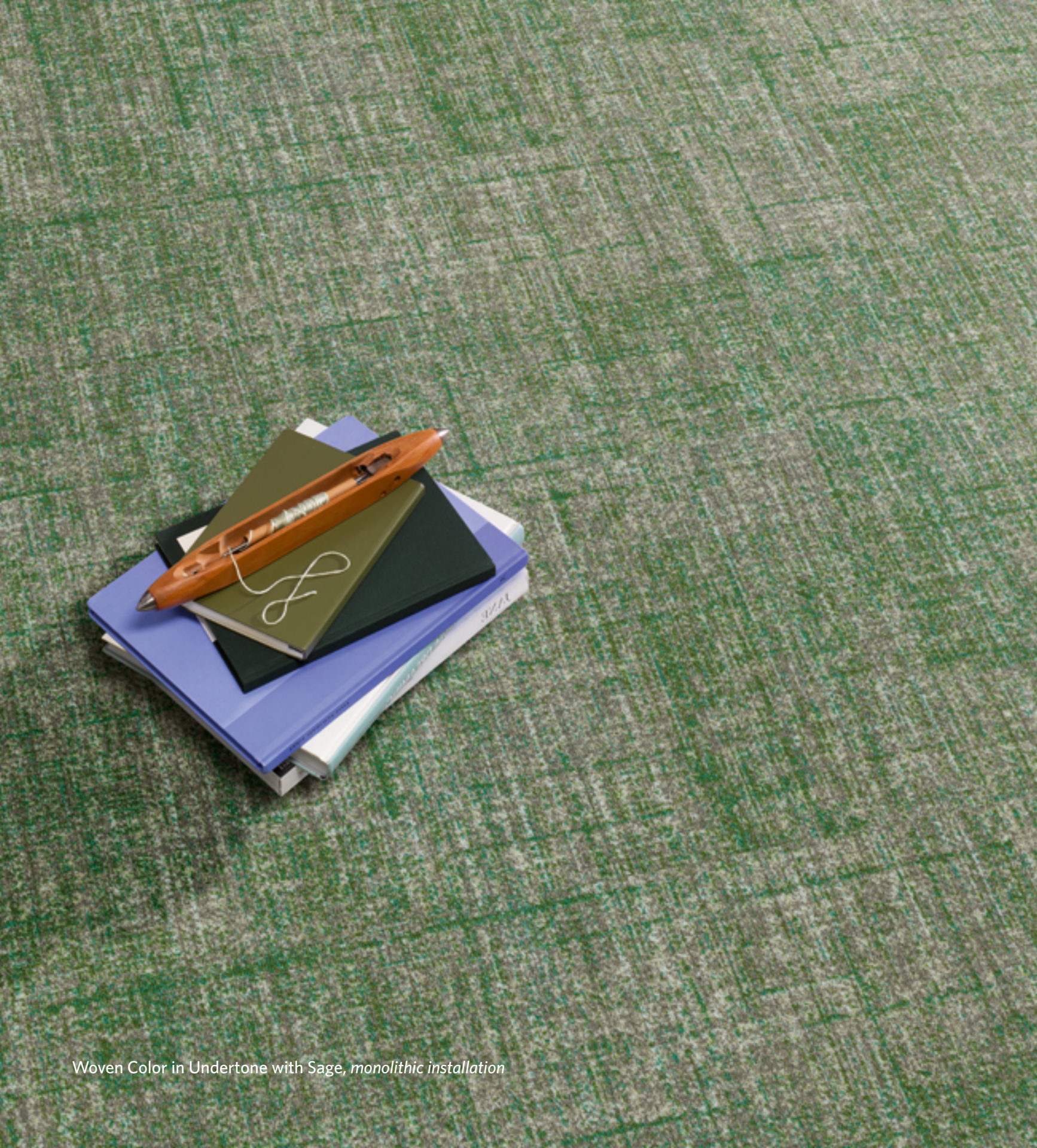
WOC189-6-153
Tweed Coat with Sienna



WOC265-209-118
Blackened with White



(from left to right)
Threaded Layer in Undertone with Sage,
In Stitches in Undertone,
Woven Color in Undertone with Sage,
monolithic installation

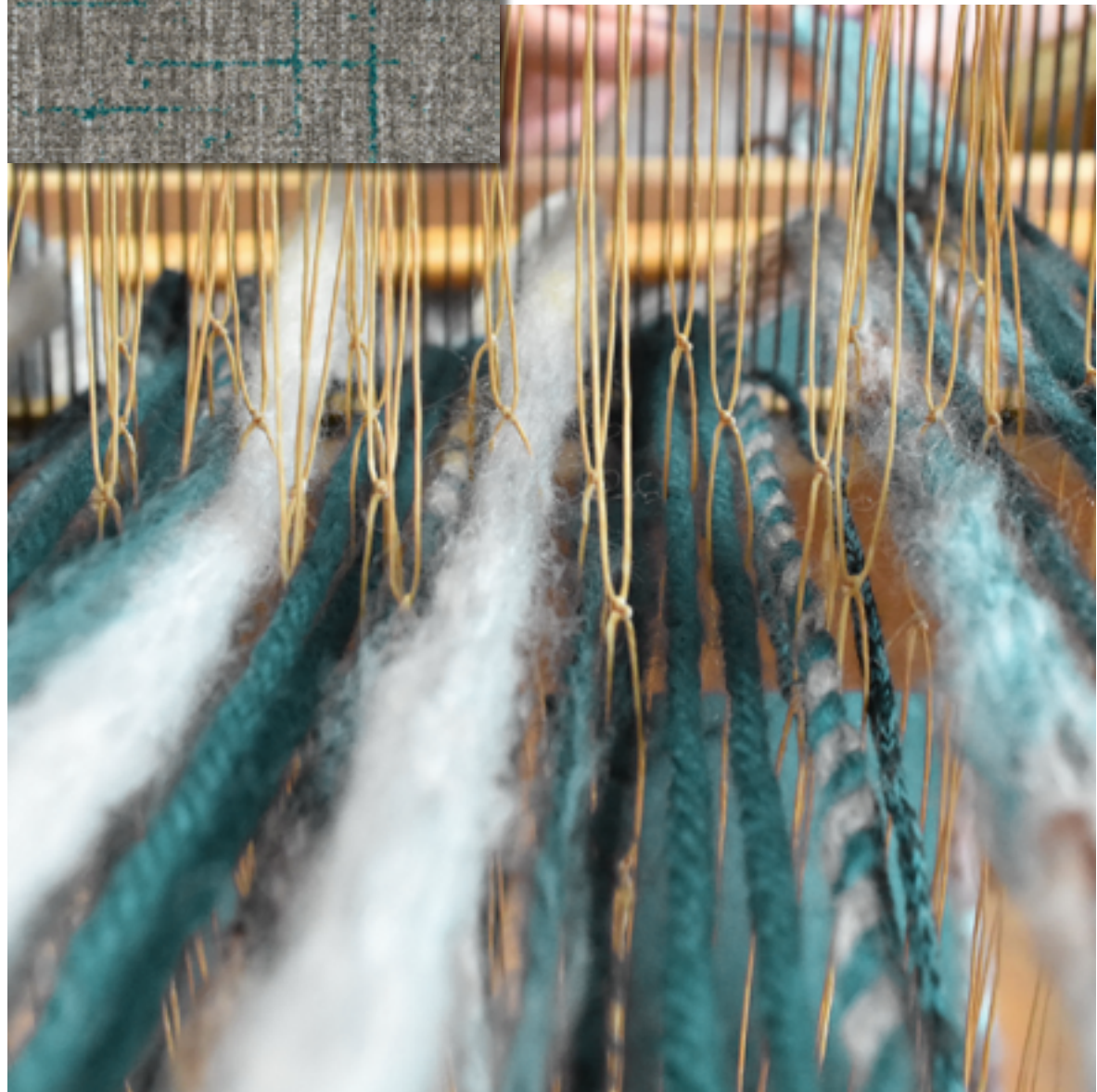
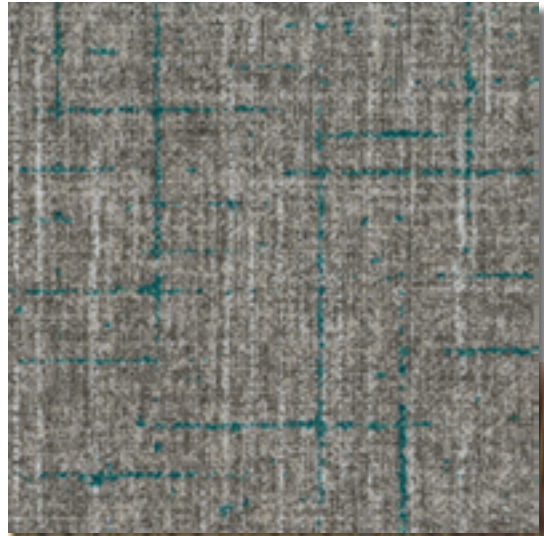


Woven Color in Undertone with Sage, *monolithic installation*





In Stitches in Camel, ashlar installation



Threaded Layer in Camel with Seafoam, monolithic installation

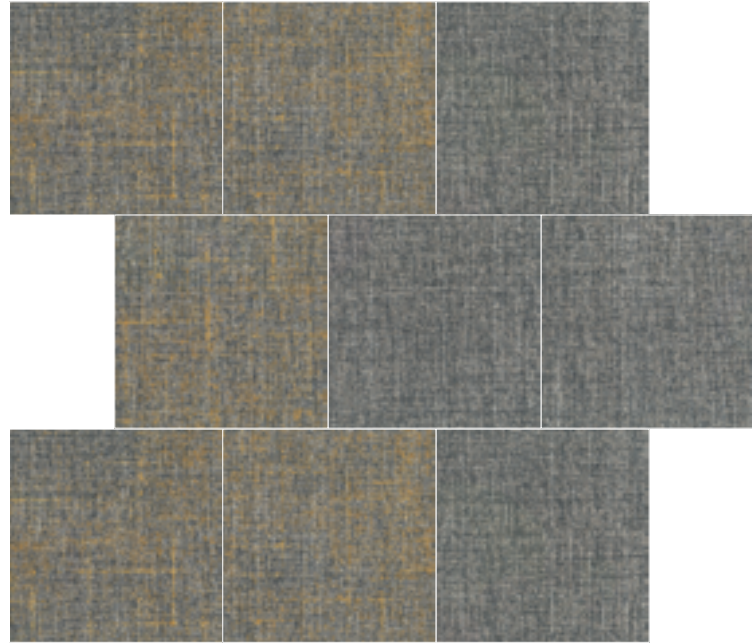


In Stitches in Camel, Woven Color in Camel with Seafoam, monolithic installation



Threaded Layer in Wool Blend with Ochre, *monolithic installation*

installation



ISC235-234
Wool Blend



WOC231-235-234
Wool Blend with Ochre



In Stitches in Wool Blend, Woven Color in Wool Blend with Ochre, ashlar installation



Threaded Layer in Baked Beige with Brick Red, monolithic installation



Woven Color in Baked Beige with Brick Red, *monolithic installation*





Work station - (from center to outer circle)
Woven Color in Baked Beige with Brick Red,
Threaded Layer in Baked Beige with Brick Red,
Meeting room - In Stitches in Baked Beige,
custom installation



Threaded Layer in Tweed Coat with Sienna, *monolithic installation*

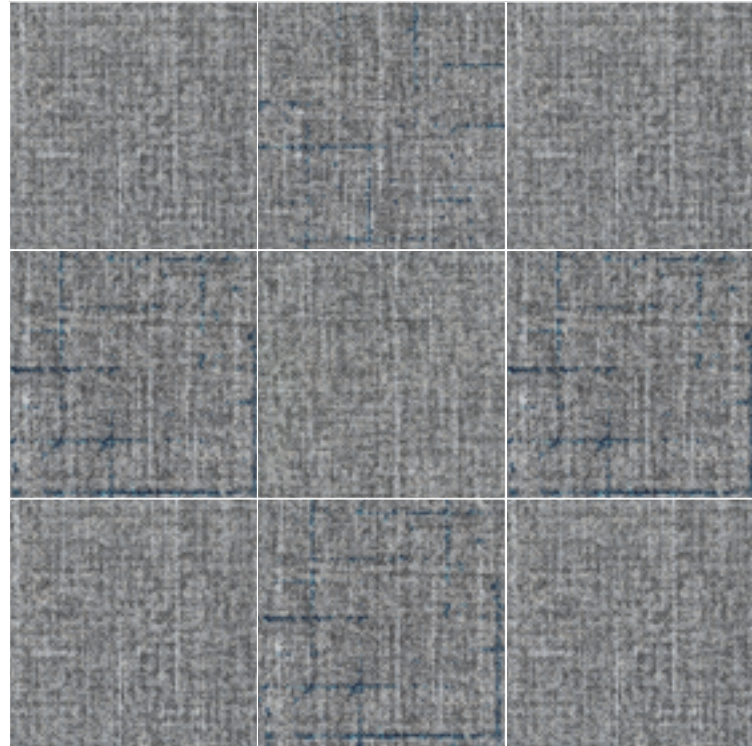


Woven Color in Tweed Coat with Sienna,
Threaded Layer in Tweed Coat with Sienna,
In Stitches in Tweed Coat,
monolithic installation

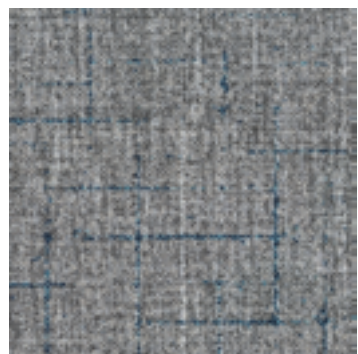


Woven Color in Dove with Midnight Blue, *monolithic installation*

installation



ISC152-180
Dove



THL196-152-180
Dove with Midnight Blue



Threaded Layer in Dove with Midnight Blue, In Stitches in Dove, *monolithic installation*



Meeting room and corridor - In Stitches in Dove, *monolithic installation*
Collaboration area - Woven Color in Dove with Midnight Blue, *monolithic installation*



Threaded Layer in Blackened with White, *ashlar* installation



Collaboration area - Echoes in Mid Crust LT Azure,
Corridor - Woven Color in Blackened with White, *monolithic installation*



Woven Color in Blackened with White, In Stitches in Blackened, *monolithic installation*

M/PACT™

CARBON NEUTRAL PROGRAM

缇薇雅集 一个碳中和计划系列

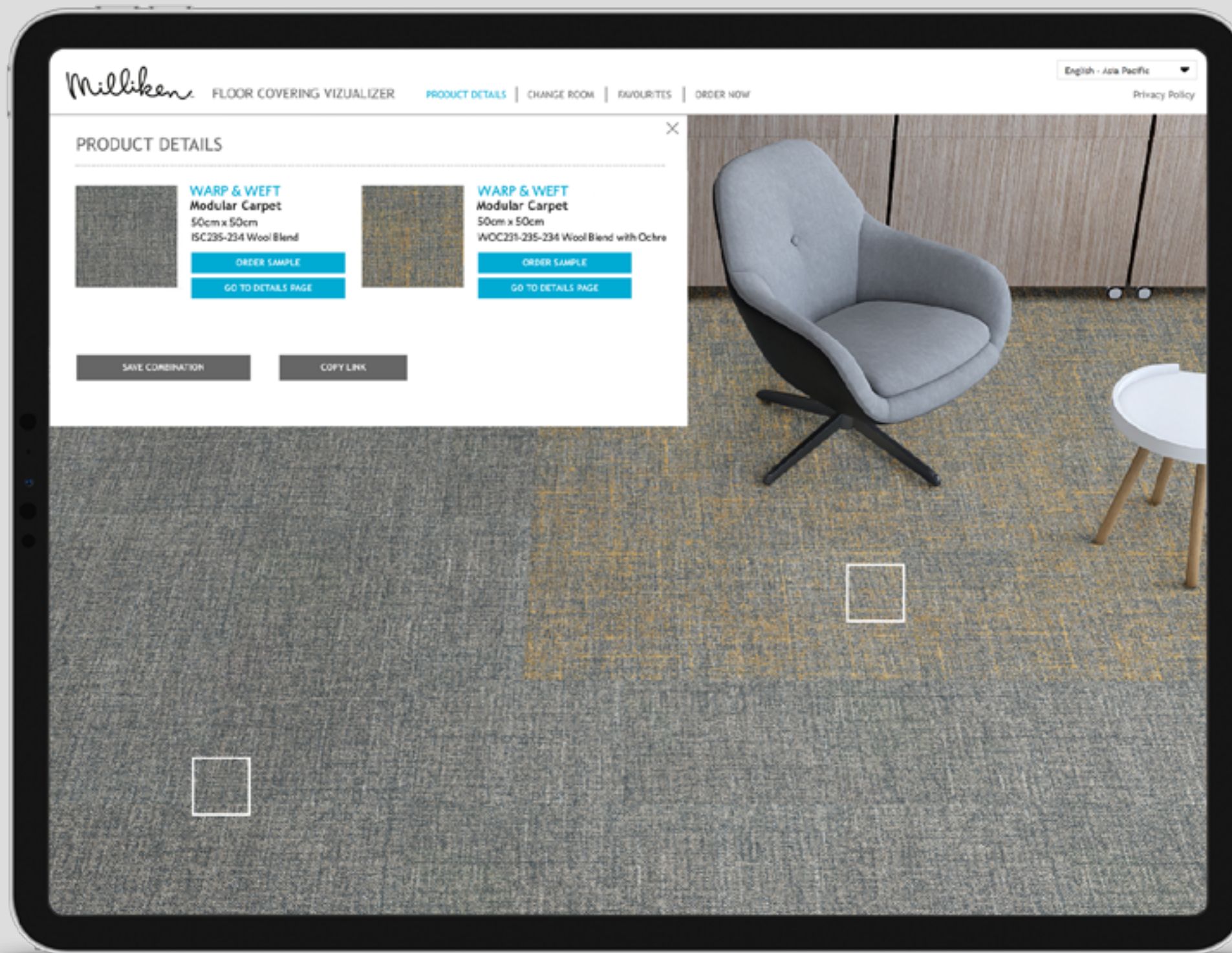
气候变化是人类面临的最大威胁之一。如今，我们的地毯、豪华乙烯基地板 (LVT) 和地垫在全球范围内都是碳中和的。我们邀请您了解我们所做出的重大改变，然后让我们共同努力，设计一个更美好的未来。

[查看更多 ▶](#)

Collaboration area - Woven Color in Wool Blend with Ochre, *monolithic installation*
Corridor - Firma in Ivory, *ashlar installation*

查看您的空间 铺装缙薇雅集系列的效果

—
使用美利肯在线渲染工具，查看 Warp & Weft（缙薇雅集）系列的多种铺装效果。仅需上传一张您空间的照片，在线渲染工具就能为您呈现地毯铺装效果。





WARP & WEFT

In Stitches / Threaded Layer / Woven Color

SPECIFICATION

Construction - Tufted, Textured Loop

Tile Size - 50cm x 50cm

Face Fiber - 100% Milliken-Certified Nylon

Dye Method - Millitron®

Standard Backing - PVC-Free WellBAC™ Comfort
Available with TractionBack®

Nominal Total Thickness - 8.4mm ± 10%

Flammability - ≥ 0.45 (Class I)

Texture Appearance Retention Rating (TARR) - Severe

Indoor Air Quality - CRI Green Label Plus™ - GLP3237, Carpet Category 5Y

技术指标

结构 - 簇绒织造圈绒结构

产品尺寸 - 50 厘米 X 50 厘米

表层纤维 - 100% 美利肯认证尼龙

染色技术 - Millitron® 数码针染技术

标准底垫 - 不含 PVC 之 WellBAC™ Comfort 舒适软底
可选装 TractionBack® 免胶

额定总厚度 - 8.4 毫米 ± 10%

阻燃性 - ≥ 0.45 (一级)

外观保持等级 (TARR) - 重度商业使用

室内空气质量 CRI Green Label Plus™ - GLP3237, 地毯类别 5Y

安装方式:

Installation Method



Monolithic
同一方向安装



Ashlar
左右错半铺装

TractionBack®

Simplify your modular installation with Milliken's patented TractionBack®, an innovative backing system that is faster, more cost efficient, and environmentally superior to wet adhesives and peel-and-stick carpet tile.

www.millikencarpet.com



Declare.



Follow us on social media:



WeChat



Instagram

Milliken

Website