



INTERACTIVE ELEMENTS

This document contains interactive elements including links to more information

Look out for these icons



SALT LAKE

VISTA / VISTA TRANSITION / ECHOES
CRYSTALS / STRATA / FATA MORGANA

Milliken®



JOURNEY OF SALT LAKE

Our new collection draws inspiration from one of the most untapped and awe-inspiring landscapes on Earth—the salt lakes of Western China. Crafted with an eye toward nature’s raw and untouched beauty, each design is an exploration of texture, form, and timeless elements.

The Salt Lakes have sculpted these breathtaking surfaces over centuries, giving rise to natural formations that evoke serenity, depth, and a quiet power. This collection translates that pristine environment into modern interior design, offering patterns and textures that elevate any space.

EXPLORE THE COLLECTION THROUGH THESE BUTTONS:

Natural forces that sculpt the landscape.

- An exploration of texture, form, and timeless elements. -



Natural Forces that sculpt the landscape.

- The everchanging hues of Nature. -

Click  the inspiration and start the salt lake journey.

BROWN CORAL / SAND / DUNE

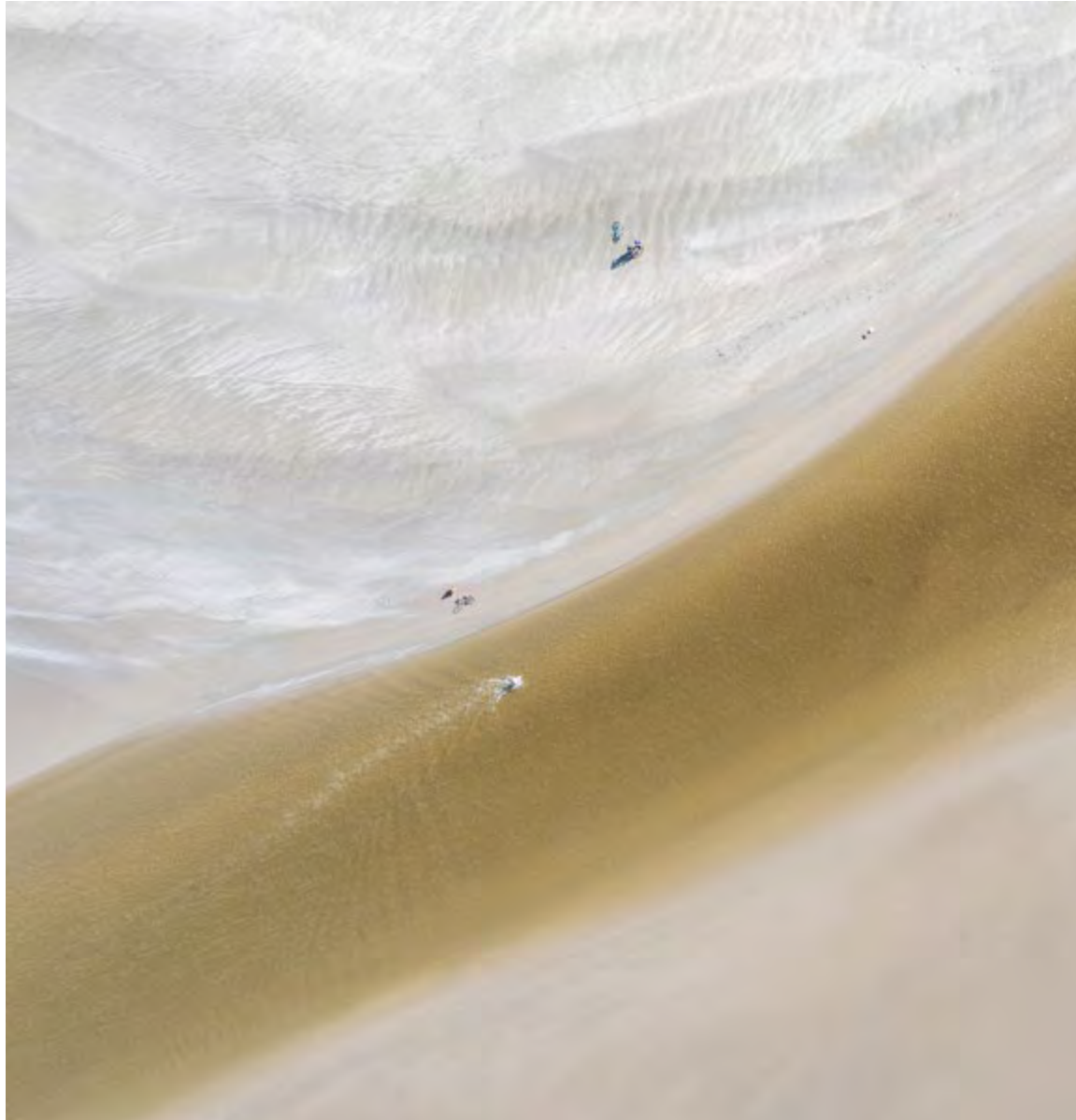
EMERALD GREEN

AZURE / GRAY / CRUST

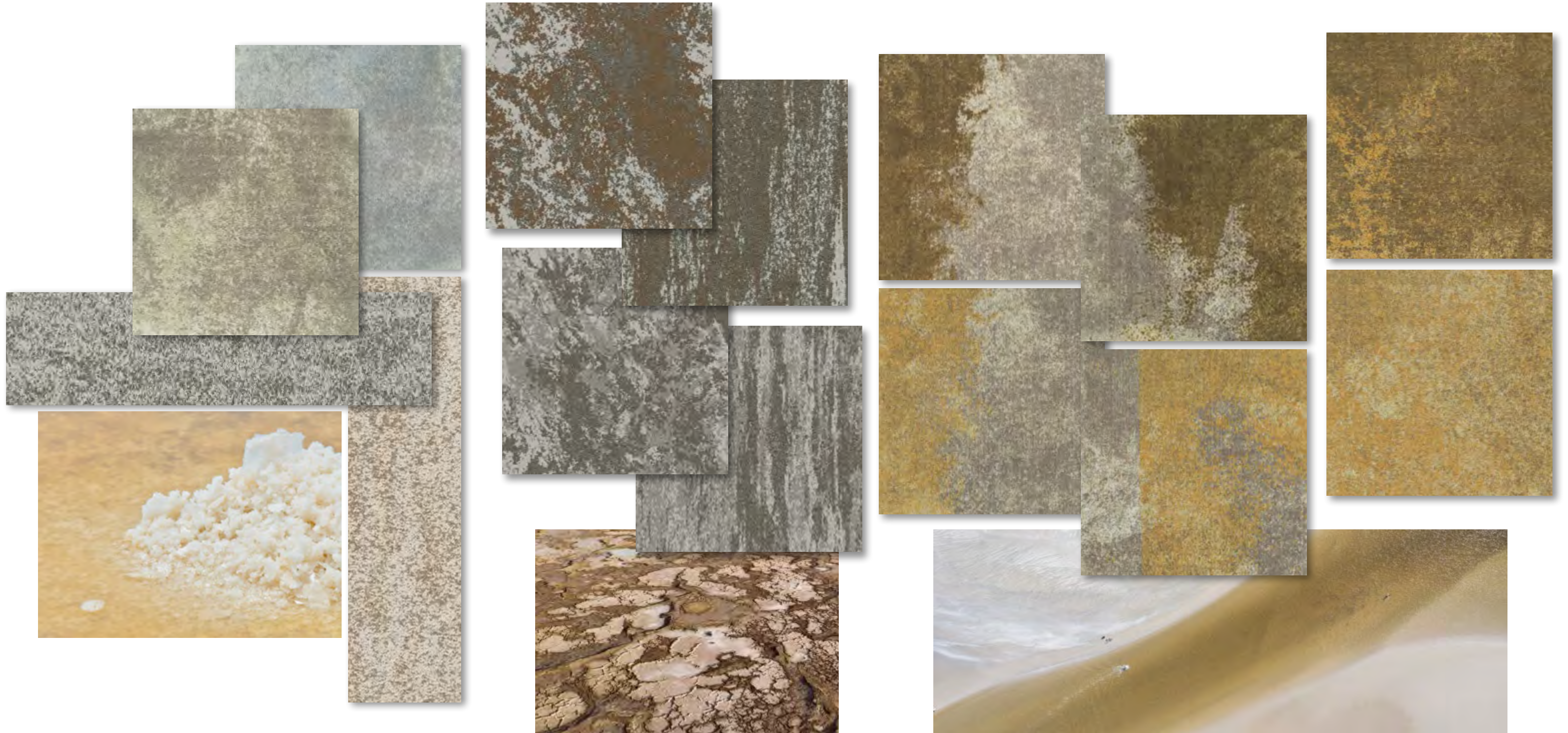
CORAL / PINK

S A L T L A K E

BROWN CORAL / SAND / DUNE



S A L T L A K E

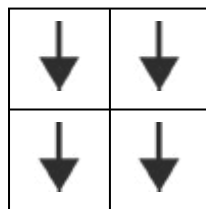




Crystals in Sand, monolithic installation,



Vista in Sand, Vista in Dune, Vista Transition in Sand/Dune, Vista Transition in Sand/Bright Dune, Vista in Bright Dune, monolithic installation,



| | |
|----|----|
| #1 | #2 |
| #3 | #4 |

VSA76-231 Bright Dune

Follow the numbered sequence and directional arrows to achieve a seamless design.





Vista in Sand, Vista in Dune, Vista Transition in Sand/Dune, Vista Transition in Sand/Bright Dune, Vista in Bright Dune, monolithic installation,



(from back to front) Vista in Dune, monolithic installation. Echoes in Sand/Dune, ashlar installation



VSA13-57 Dune(Tile size: 1M*1M)
EHS208-204/13-57 Sand/Dune (Tile size: 25CM*1M)
CYT220-214 Sand(Tile size: 25CM*1M)



Echoes in Sand/ Dune, ashlar installation

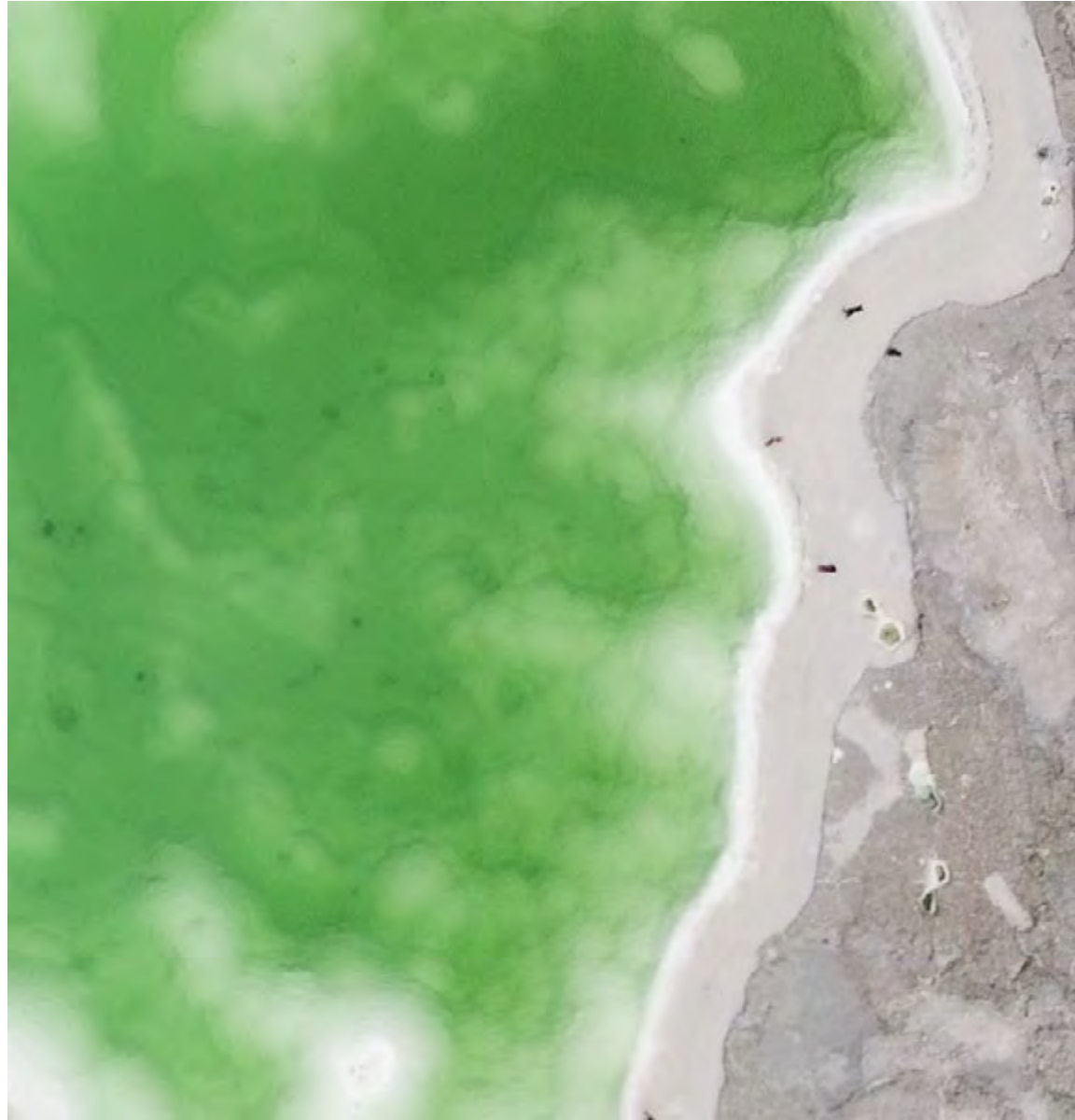


Fata Morgana in Beige, herringbone installation

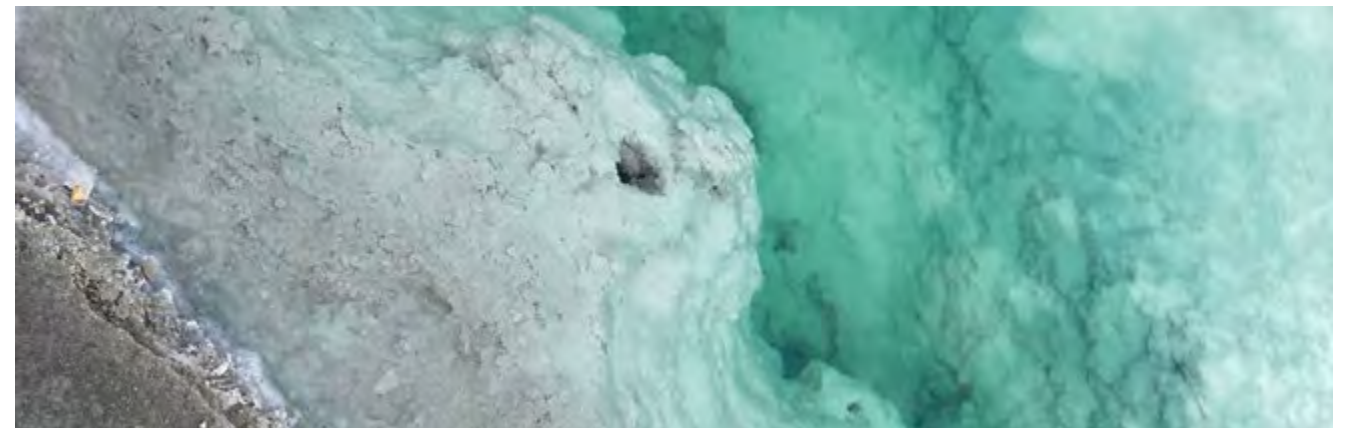
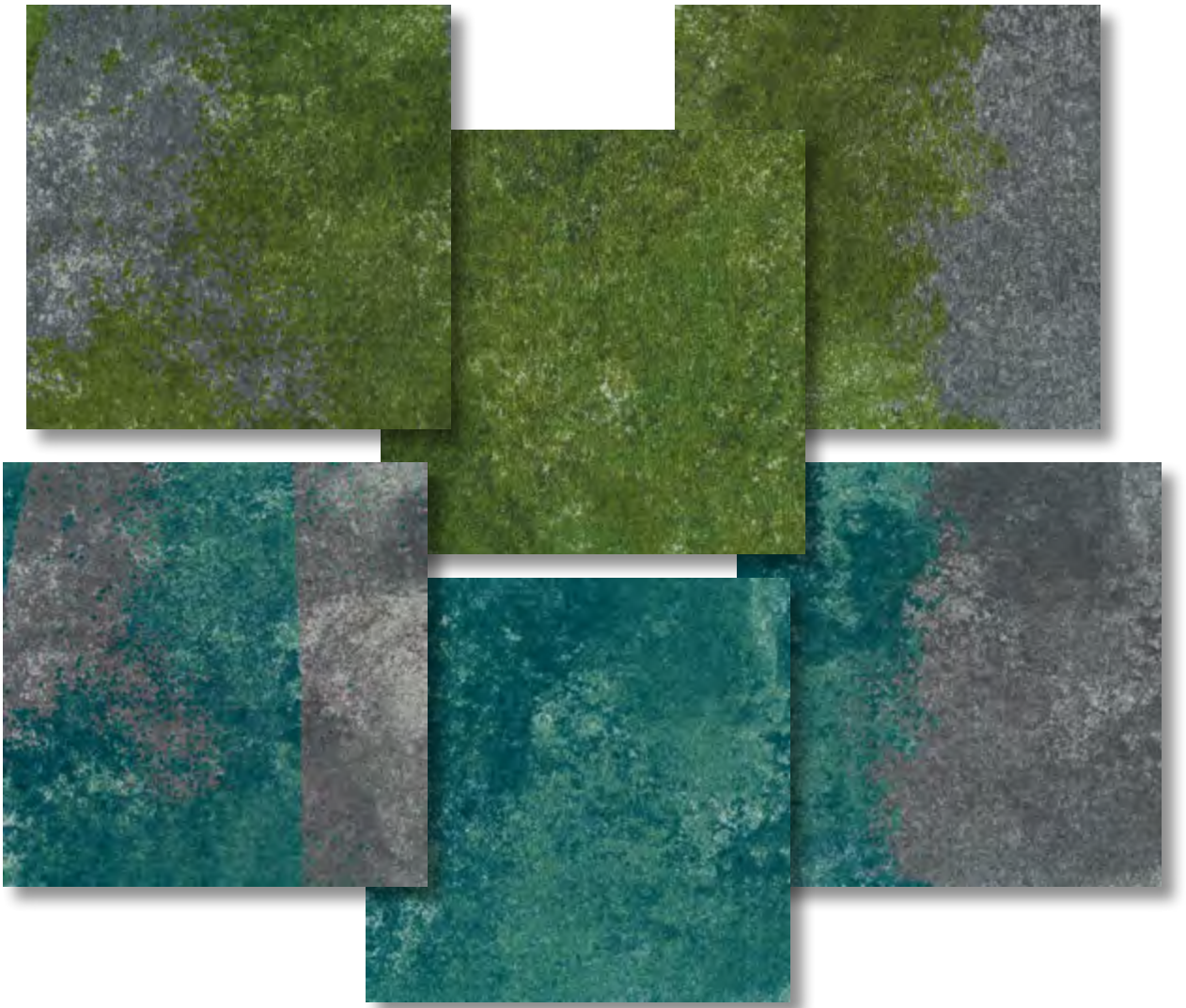


Fata Morgana in Brown Coral, Strata in Brown Coral, ashlar installation

S A L T L A K E
EMERALD GREEN



S A L T L A K E





(from back to front) Vista Transition in Mid Crust/Emerald, Vista in Emerald Green, Strata in Emerald and Emerald Beige, Crystals in Beige, custom installation

VST153-174/203-202
Mid Crust/Emerald Green

VSA203-202 Emerald Green

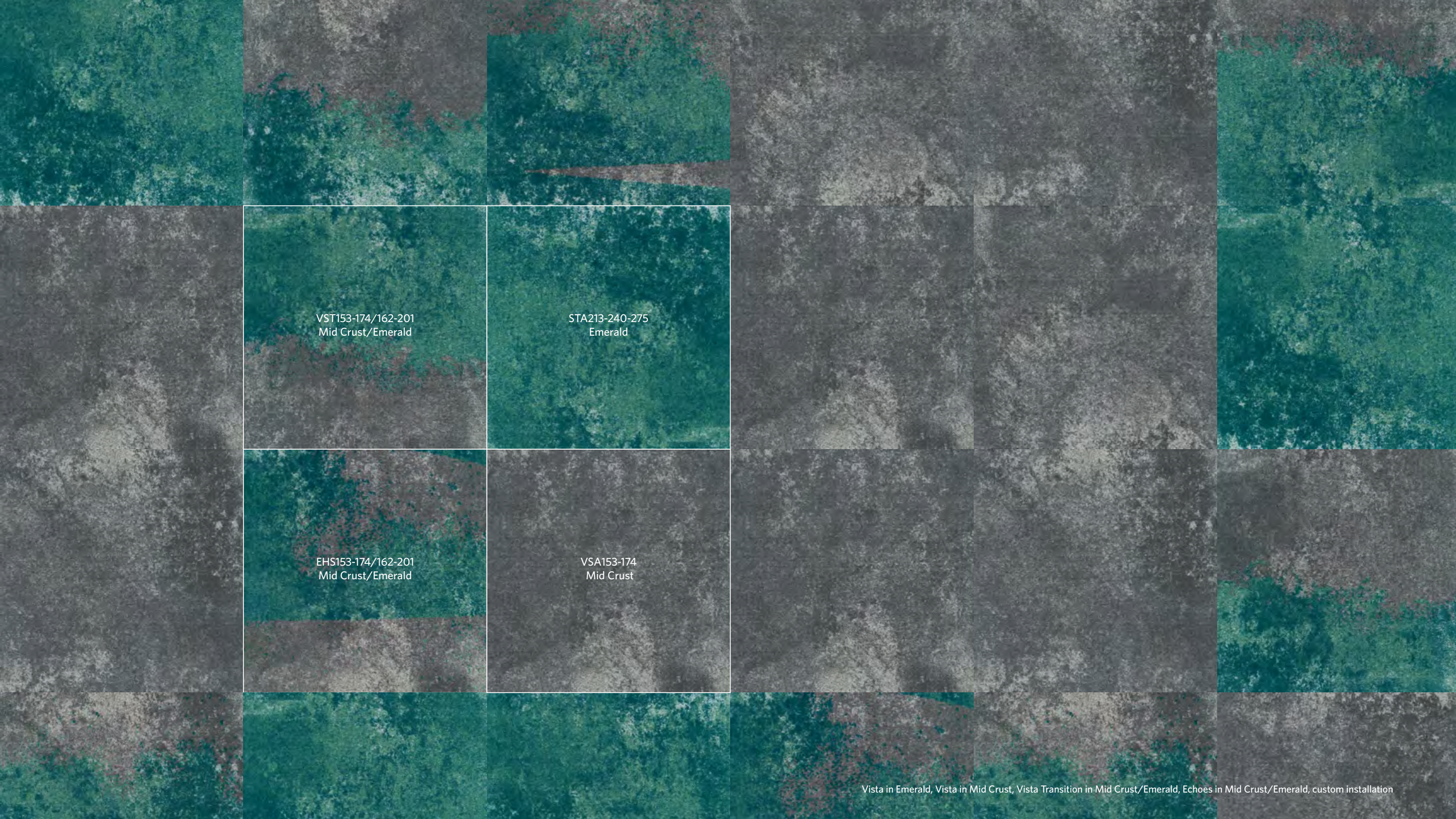
STA213-240-275 Emerald

STA217-240-235 Emerald Beige

CYT217-235 Beige



Vista in Emerald, Vista in Mid Crust, Vista Transition in Mid Crust/Emerald, Echoes in Mid Crust/Emerald, custom installation



VST153-174/162-201
Mid Crust/Emerald

STA213-240-275
Emerald

EHS153-174/162-201
Mid Crust/Emerald

VSA153-174
Mid Crust

Vista in Emerald, Vista in Mid Crust, Vista Transition in Mid Crust/Emerald, Echoes in Mid Crust/Emerald, custom installation







Fata Morgana in DK Emerald, Strata in DK Emerald, Emerald and Emerald Beige, herringbone installation

S A L T L A K E

AZURE / GRAY / CRUST



S A L T L A K E



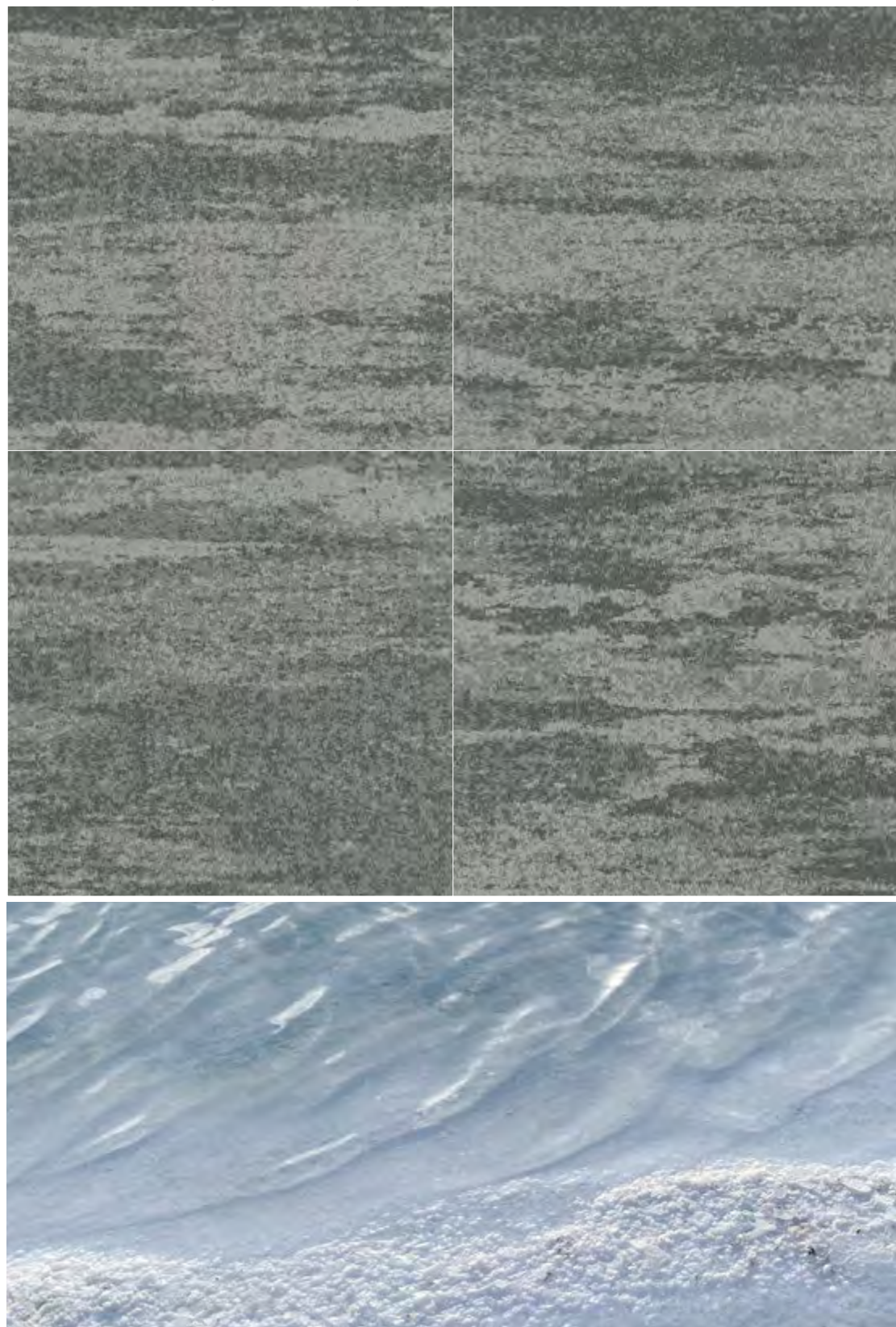
VSA209-215 LT Crust (Tile size: 1M*1M)

CYT215-209 Crust(Tile size: 25CM*1M)



(left)Vista in LT Crust, monolithic installation. (right)Crystals in Crust, ashlar installation

STA13-209 Mid Crust (Tile size:1M*1M)



Strata in Mid Crust, monolithic installation



(from left to right) Vista in Mid Crust, ashlar installation. Vista Transition in Mid Crust/LT Azure, Vista in LT Azure, monolithic installation

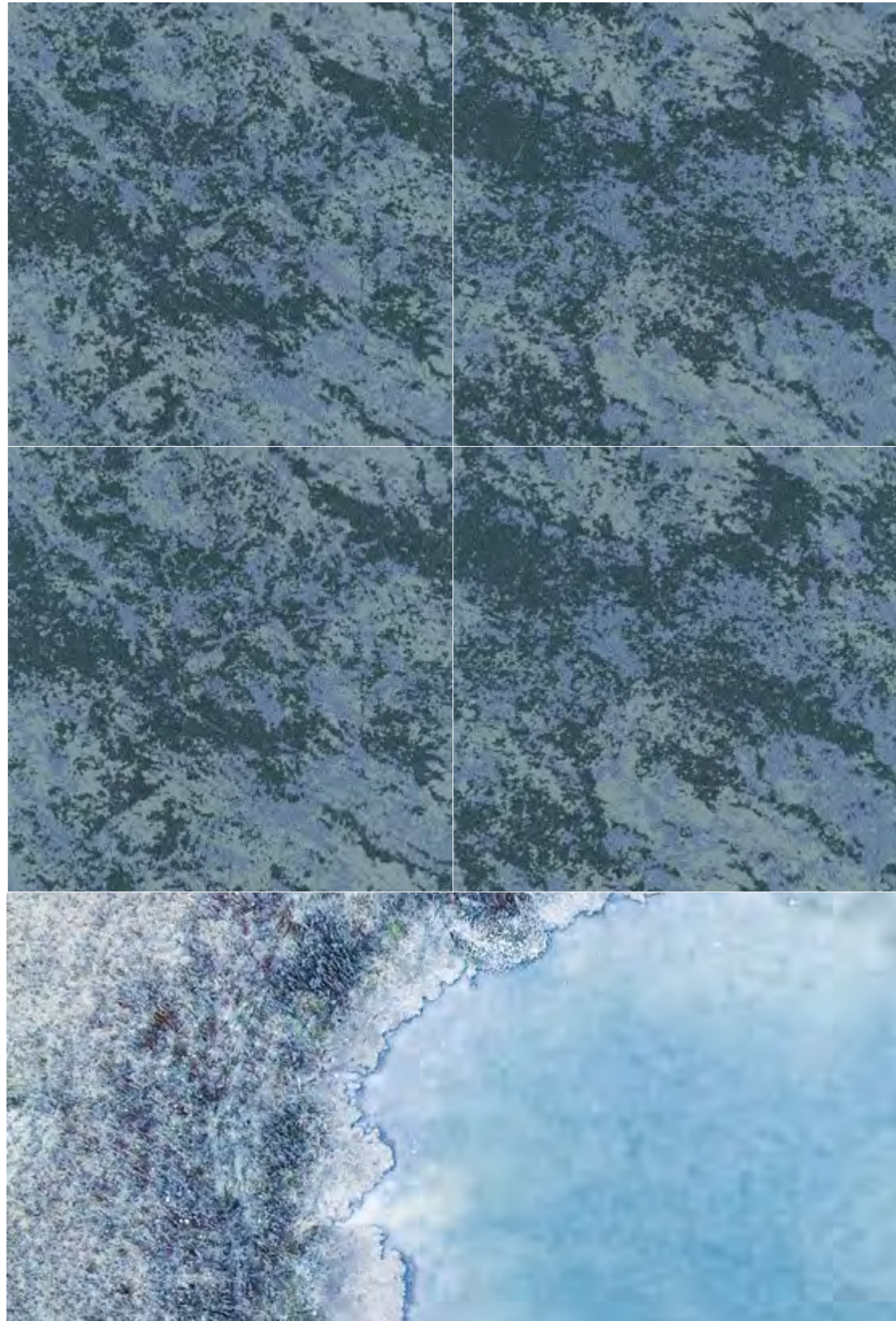


(from left to right) Vista in Mid Crust, ashlar installation. Vista Transition in Mid Crust/LT Azure, Vista in LT Azure, monolithic installation



(from left to right)Vista in Azure, Vista Transition in Mid Crust/Azure, Vista in Mid Crust, monolithic installation

FTM247-267-264 Azure (Tile size: 1M*1M)



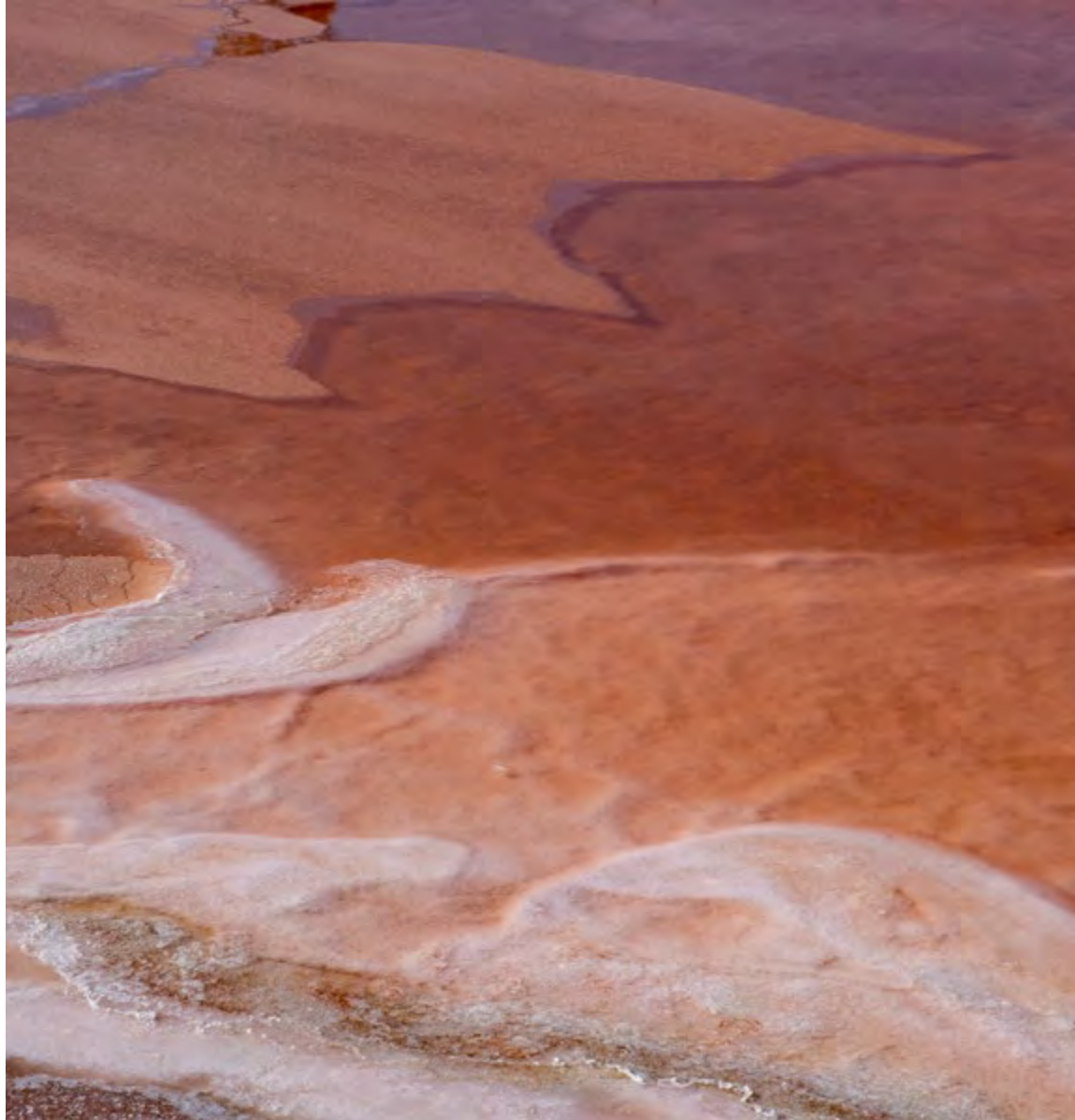
(left)Fata Morgana in Azure, (back)Strata in Mid Crust, monolithic installation



(field)Fata Morgana in Gray Azure, (border)Crystals in Mid Crust, ashlar installation

S A L T L A K E

CORAL / PINK



S A L T L A K E







VSA44-261 Pink Coral (Tile size: 25CM*1M)
FTM220-262-256 Coral (Tile size: 25CM*1M)



Vista in Pink Coral, Fata Morgana in Coral, ashlar installation



Echoes in Sand/Dark Coral, monolithic installation





(from left to right) Echoes in Sand/DarkCoral, Vista Transition in Sand/Pink Coral, monolithic installation

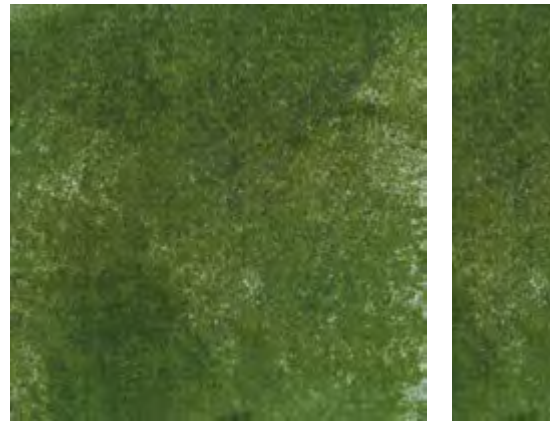


Echoes in Sand/Pink Coral, monolithic installation

PATTERN EXPLANATION

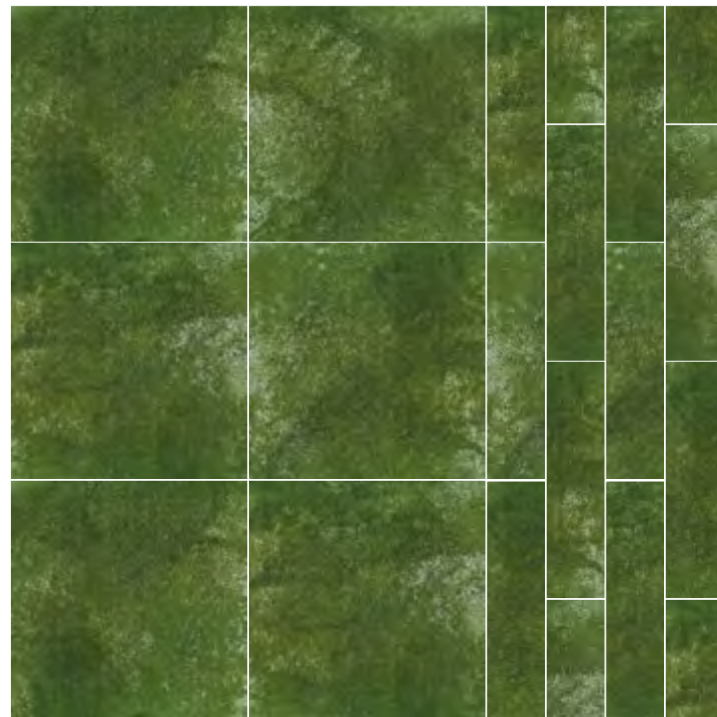
PATTERN EXPLANATION

VISTA | Available tile size: 1M * 1M / 25CM*1M

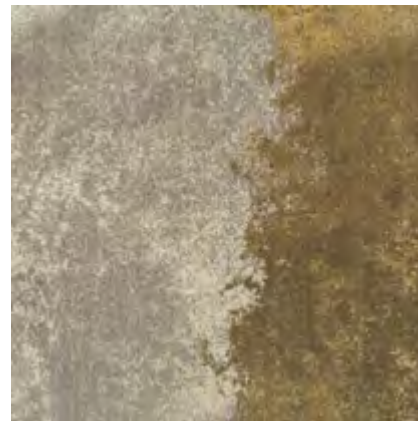


VSA203-202 Emerald Green

6 Tile + Plank Layout

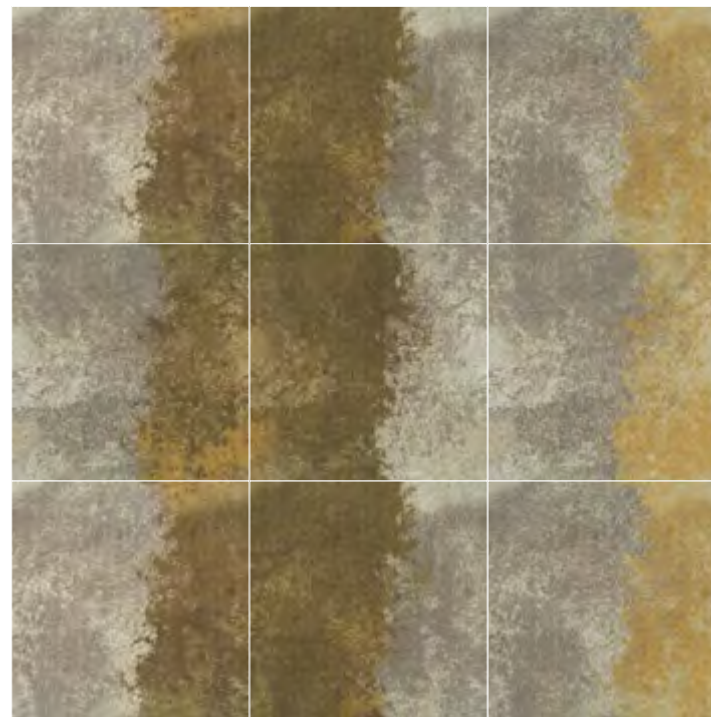


VISTA TRANSITION | Available tile size: 1M * 1M

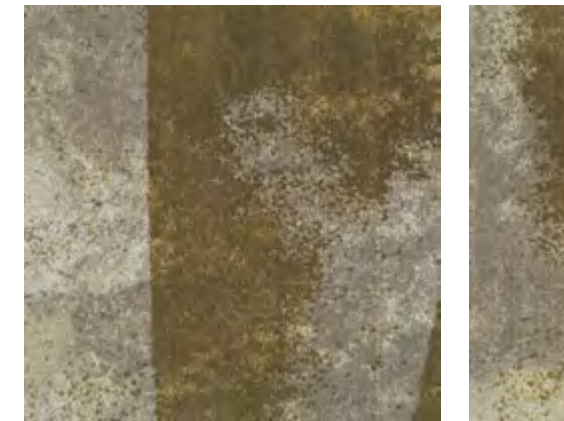


VST208-204/13-57 Sand/Dune

9 Tile Layout (With VST208-204/76-231 Sand/Bright Dune)

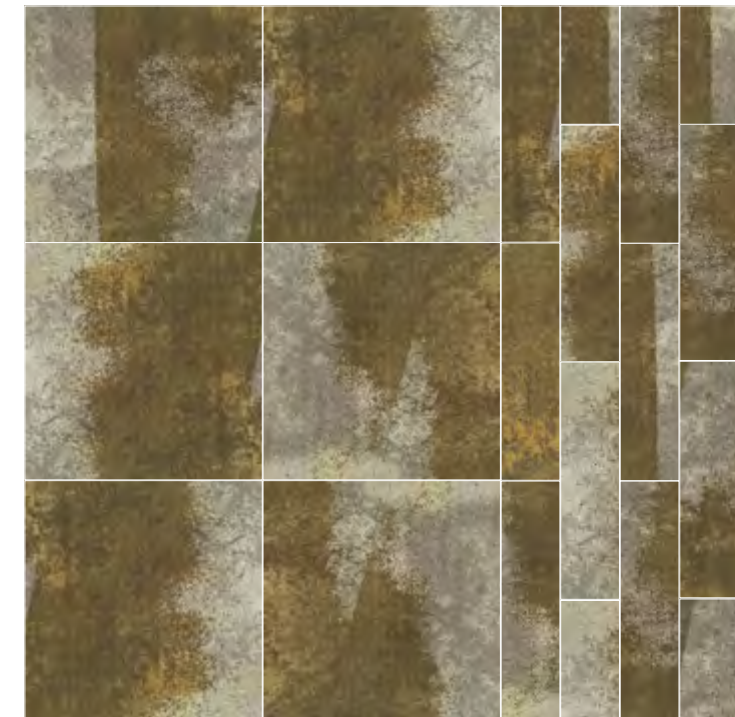


ECHOES | Available tile size: 1M * 1M / 25CM*1M



EHS208-204/13-57 Sand/Dune

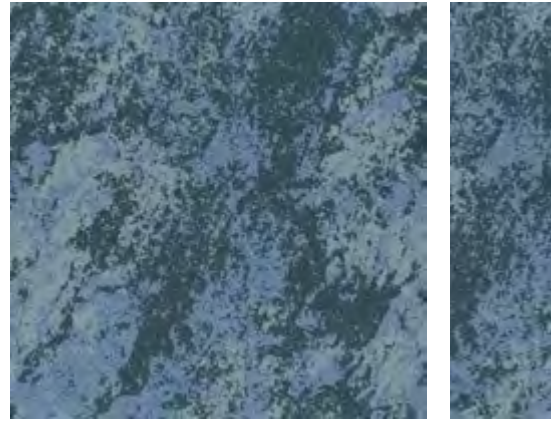
6 Tile + Plank Layout



PATTERN EXPLANATION

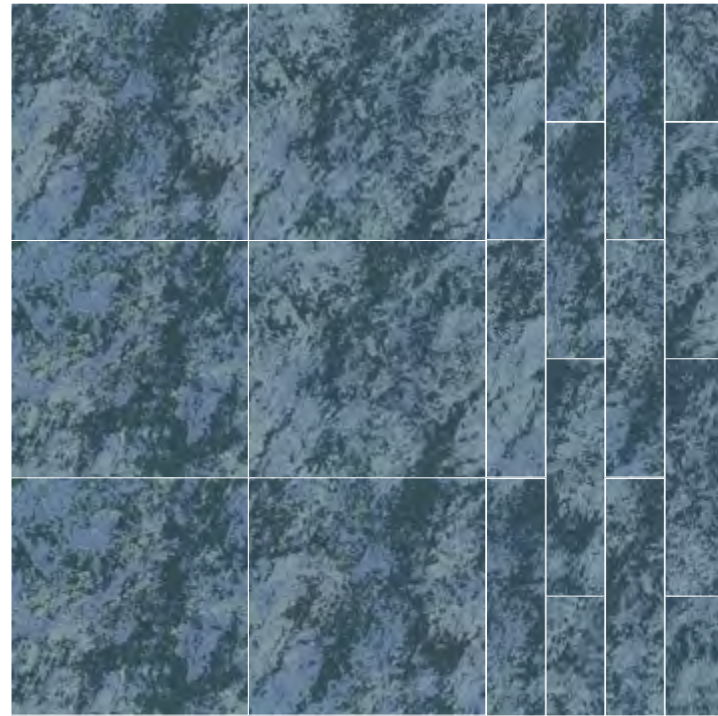
PATTERN EXPLANATION

FATA MORGANA | Available tile size: 1M * 1M / 25CM*1M

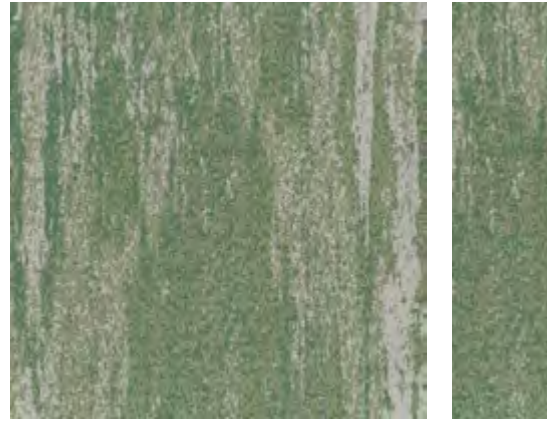


FTM247-267-264 Azure

6 Tile + Plank Layout



STRATA | Available tile size: 1M * 1M / 25CM*1M

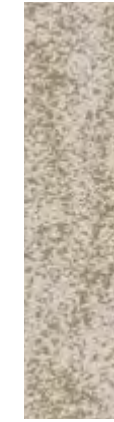


STA213-240-275 Emerald

6 Tile + Plank Layout

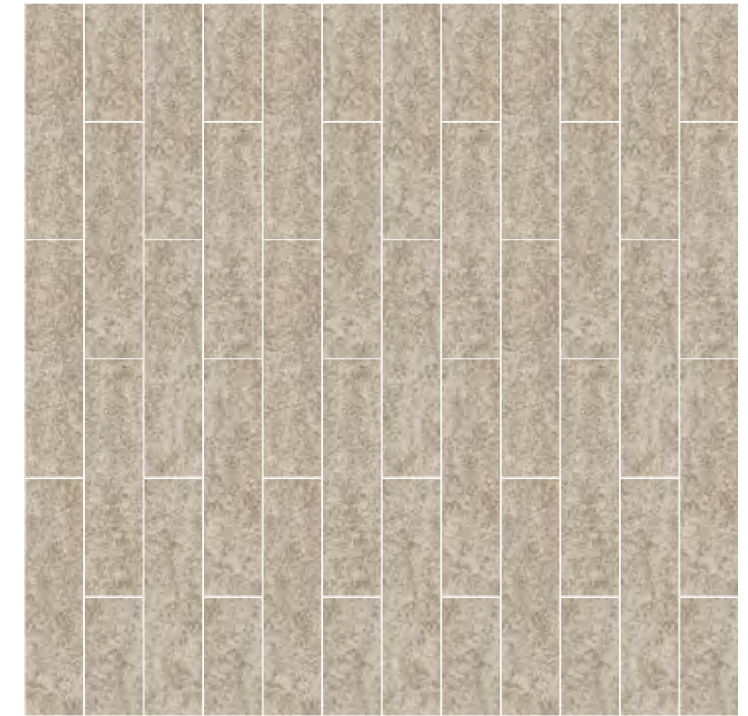


CRYSTALS | Available tile size: 25CM*1M



CYT220-214 Sand

Plank Layout

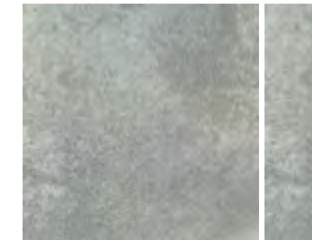


COLORLINE

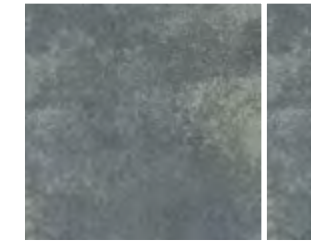
VISTA | Available tile size: 1M * 1M / 25CM*1M



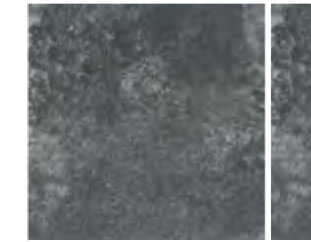
VSA208-204 Sand



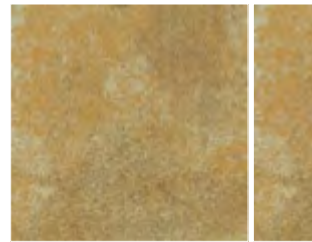
VSA209-215 LT Crust



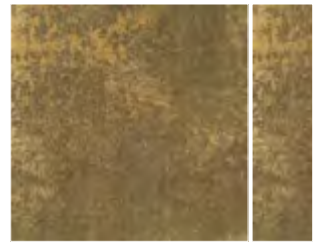
VSA180-153 Crust



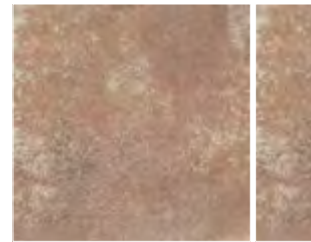
VSA153-174 Mid Crust



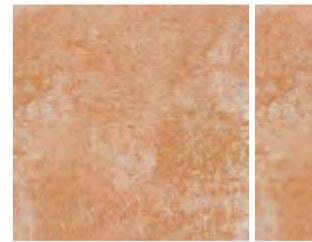
VSA76-231 Bright Dune



VSA13-57 Dune



VSA44-261 Pink Coral



VSA33-146 Coral



VSA70-221 Dark Coral



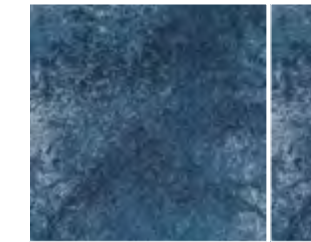
VSA203-202 Emerald Green



VSA162-201 Emerald



VSA138-140 LT Azure



VSA157-228 Azure

VISTA TRANSITION | Available tile size: 1M * 1M



VST208-204/76-231
Sand/Bright Dune



VST208-204/13-57
Sand/Dune



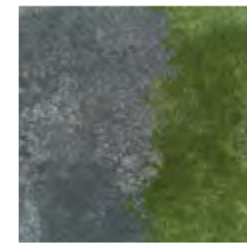
VST208-204/44-261
Sand/Pink Coral



VST208-204/33-146
Sand/Coral



VST208-204/70-221
Sand/Dark Coral



VST153-174/203-202
Mid Crust/Emerald Green



VST153-174/162-201
Mid Crust/Emerald



VST153-174/138-140
Mid Crust/LT Azure



VST153-174/157-228
Mid Crust/Azure

ECHOES | Available tile size: 1M * 1M / 25CM*1M



EHS208-204/76-231
Sand/Bright Dune



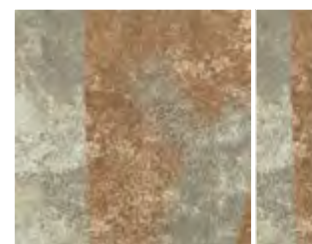
EHS208-204/13-57
Sand/Dune



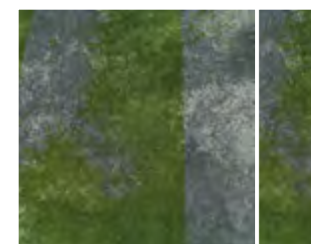
EHS208-204/44-261
Sand/ Pink Coral



EHS208-204/33-146
Sand/Coral



EHS208-204/70-221
Sand/Dark Coral



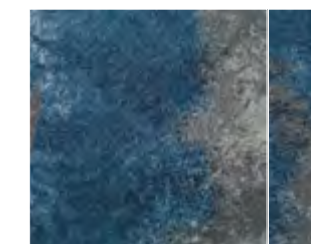
EHS153-174/203-202
Mid Crust/Emerald Green



EHS153-174/162-201
Mid Crust/Emerald



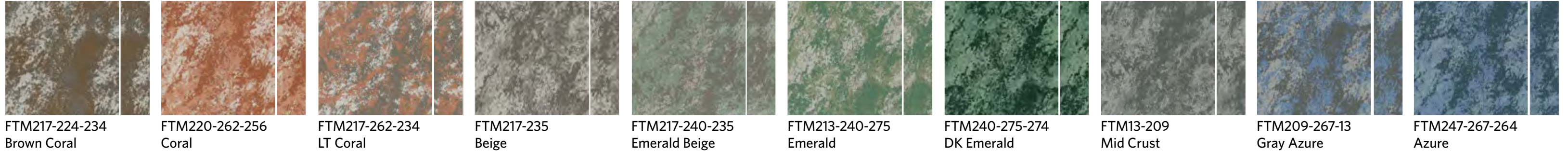
EHS153-174/138-140
Mid Crust/LT Azure



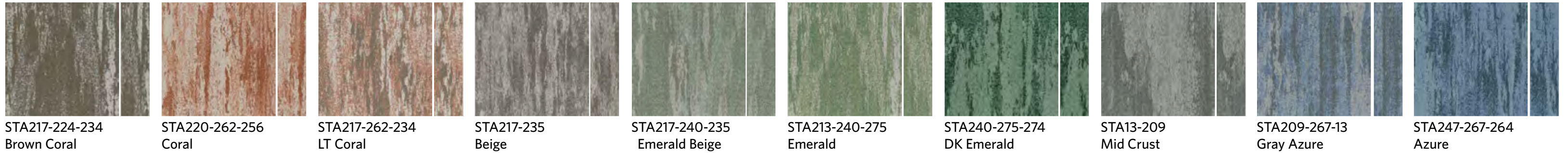
EHS153-174/157-228
Mid Crust/Azure

COLORLINE

FATA MORGANA | Available tile size: 1M * 1M / 25CM*1M



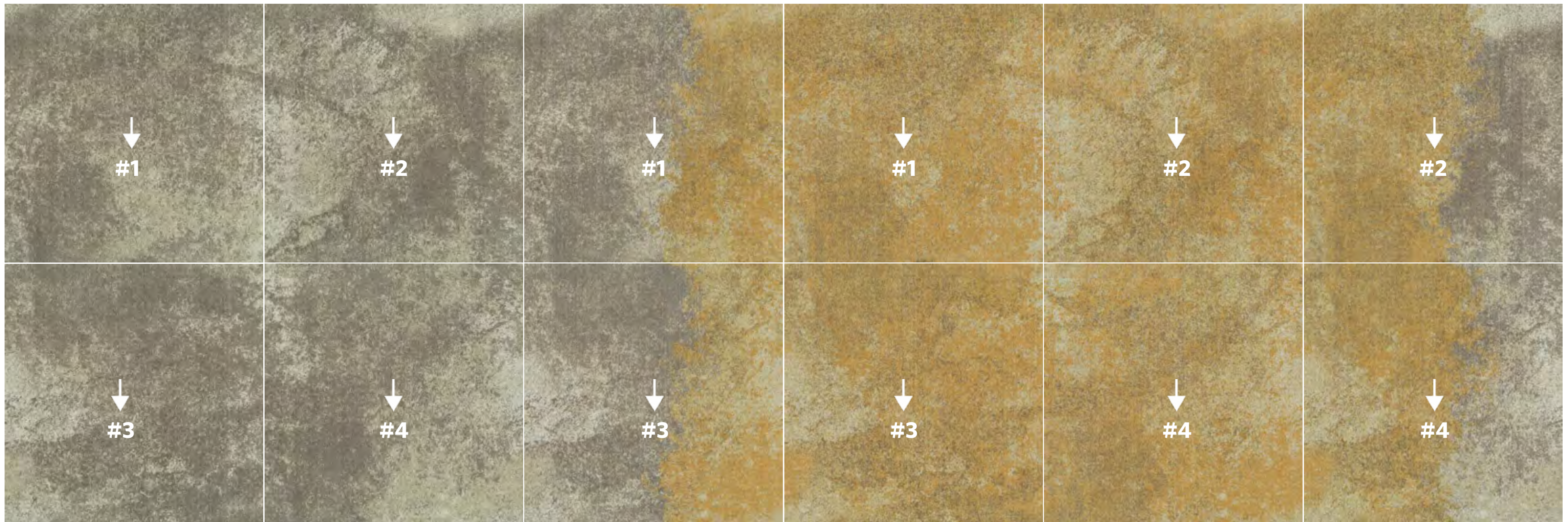
STRATA | Available tile size: 1M * 1M / 25CM*1M



CRYSTALS | Available tile size: 25CM*1M



INSTALLATION GUIDE

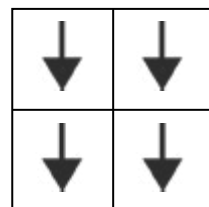


VISTA
VSA208-204 Sand

VISTA TRANSITION
VST208-204/76-231
Sand/Bright Dune

VISTA
VSA76-231 Bright Dune

VISTA TRANSITION
VST76-231/208-204
Bright Dune/Sand



Follow the numbered sequence and directional arrows to achieve a seamless design.

M/PACT™

CARBON NEUTRAL PROGRAM

SALT LAKE

CARBON NEUTRAL PROGRAM

Climate change is one of the greatest threats facing humanity. Today, our carpet, LVT and entryway tiles are carbon neutral everywhere in the world. We invite you to learn more about the significant changes we've made, then let's work together to design a better future.

N/XT LIFE™

Milliken leads the Circular Economy charge with 100% recyclable WellBAC™ products.

We incorporate recycled materials, minimize raw material usage, and employ value-engineered constructions to create visually appealing, eco-conscious designs.

REDUCE

- Value engineered constructions
- Less virgin materials and use **100%** ECONYL® recycled yarn
- The recycled content in the raw materials of each carpet is as high as **59%**

REUSE

- Designing for reuse/circularity
- Healthy materials with third party verification
- Cushion backed carpet can extend the life of the product

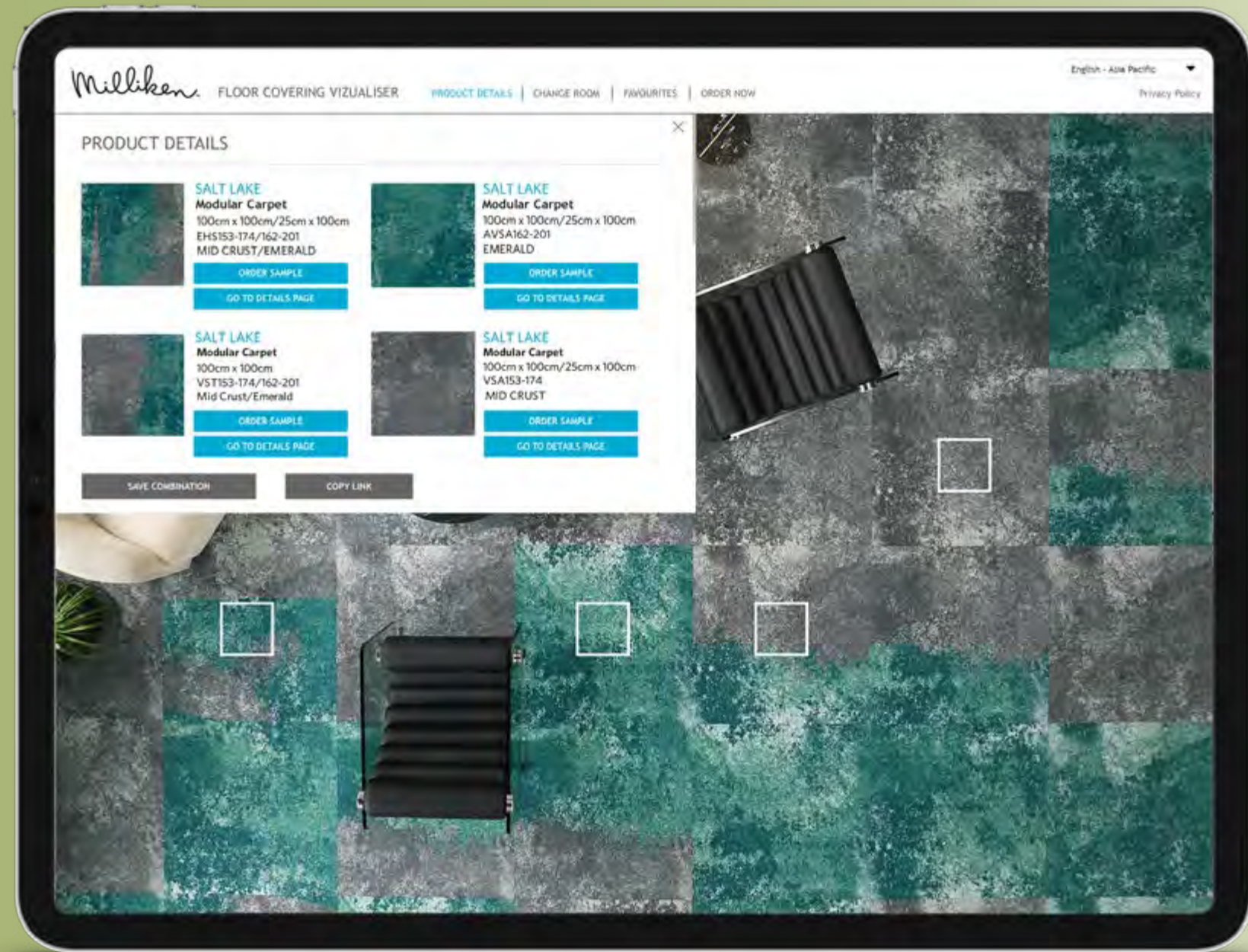
RECYCLE

- Our carpet product is 100% recyclable
- We recycle carpet tiles with local partners, achieving a 100% diversion rate. The collected tiles are transformed into fiber plastic panels for outdoor flooring and fencing



VIEW SALT LAKE IN YOUR SPACE

Use the online visualiser to view different layouts of Salt lake. Simply upload a photograph of your space and let the visualiser do the rest.



Salt lake

Vista / Vista Transition / Echoes

SPECIFICATION

Construction - Tufted, Textured Loop

Tile Size - 25cm x 100cm / 100cm x 100cm

Face Fiber - 100% Milliken-Certified Nylon

Dye Method - Millitron®

Standard Backing - PVC-Free WellBAC™ Comfort
Available with TractionBack®

Nominal Total Thickness - 8.0mm
8.5mm*

Flammability - U 0.45 (Class I)

Texture Appearance Retention Rating (TARR) - Severe

Indoor Air Quality - CRI Green Label Plus™

- GLP3237, Carpet Category 5Y

* For Trimline Product

技术指标

结构 - 簇绒织造圈绒结构

产品尺寸 - 25 厘米 X 100 厘米 / 100 厘米 X 100 厘米

表层纤维 - 100% 美利肯认证尼龙

染色技术 - Millitron® 数码针染技术

标准底垫 - 不含 PVC 之 WellBAC™ Comfort 舒适底背
可选装 TractionBack® 免胶

额定总厚度 - 8.0 毫米
8.5 毫米 *

阻燃性 - ≥ 0.45 (一级)

外观保持等级 (TARR) - 重度商业使用

室内空气质量 CRI Green Label Plus™

- GLP3237, 地毯类别 5Y

Salt lake

Fata Morgana / Strata / Crystals

SPECIFICATION

Construction - Tufted, Textured Loop

Tile Size - 25cm x 100cm / 100cm x 100cm

Face Fiber - ECONYL® Solution-Dyed Nylon

Dye Method - Solution Dyed

Standard Backing - PVC-Free WellBAC™ Comfort
Available with TractionBack®

Nominal Total Thickness - 9.3mm

Flammability - U 0.45 (Class I)

Texture Appearance Retention Rating (TARR) - Heavy

Indoor Air Quality - CRI Green Label Plus™

- GLP100130, Carpet Category 13X

技术指标

结构 - 簇绒织造圈绒结构

产品尺寸 - 25 厘米 X 100 厘米 / 100 厘米 X 100 厘米

表层纤维 - ECONYL® 原液染尼龙

染色技术 - 原液染色

标准底垫 - 不含 PVC 之 WellBAC™ Comfort 舒适底背
可选装 TractionBack® 免胶

额定总厚度 - 9.3 毫米

阻燃性 - ≥ 0.45 (一级)

外观保持等级 (TARR) - 频繁商业使用

室内空气质量 CRI Green Label Plus™

- GLP100130, 地毯类别 13X

Installation Method

安装方式:



Monolithic
同一方向安装



All Plank Methods
所有板条安装

TractionBack®

Simplify your modular installation with Milliken's patented TractionBack®, an innovative backing system that is faster, more cost efficient, and environmentally superior to wet adhesives and peel-and-stick carpet tile.



ECONYL®
ENDLESS POSSIBILITIES

Declare.

Follow us on social media:

WeChat

Instagram

Website

 | © 2024 Milliken & Company

(from top to down) Vista in Mid Crust,
Vista Transition in Mid Crust/Emerald Green,
Vista in Emerald Green, monolithic installation