



# WARP & WEFT

In Stitches / Threaded Layer / Woven Color

Milliken®

# WARP & WEFT

—  
Celebrates the timeless artistry of textiles, weaving together tradition and modernity in a series of sophisticated patterns. Drawing inspiration from the intricate interplay of threads, this collection brings depth, texture, and movement to interior spaces.



# IN STITCHES

—  
Highlights the fine precision of stitched details, designed as a seamless, textural field pattern.

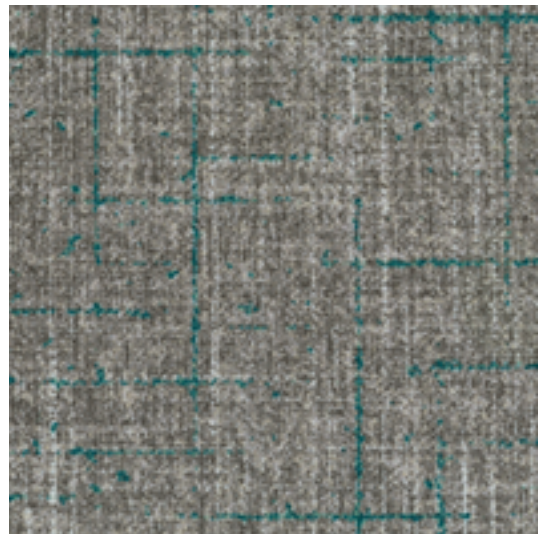


Camel  
ISC218-44  
*monolithic installation*



# THREADED LAYER

—  
Emphasizes the depth of accent stitching, creating a rich, tactile design with a woven feel.

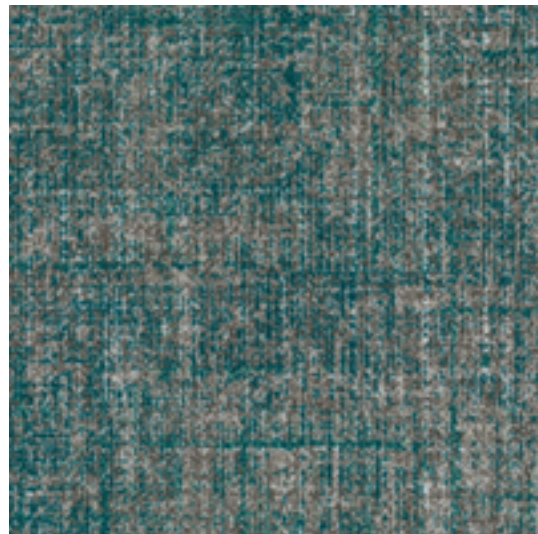


Camel with Seafoam  
THL201-218-44  
*monolithic installation*



# WOVEN COLOR

—  
Introduces a dynamic fusion  
of accent yarns, seamlessly  
blending hues to reflect the  
vibrant movement of a loom.



Camel with Seafoam  
WOC201-218-44  
*monolithic installation*



# COLORLINE

## In Stitches



ISC208-121  
Undertone



ISC218-44  
Camel



ISC235-234  
Wool Blend



ISC235-254  
Baked Beige



ISC152-180  
Dove

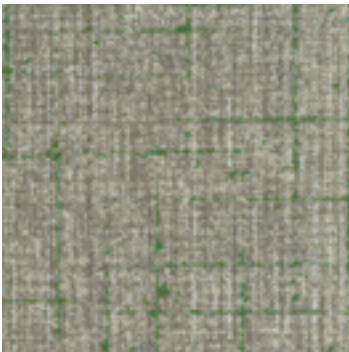


ISC6-153  
Tweed Coat

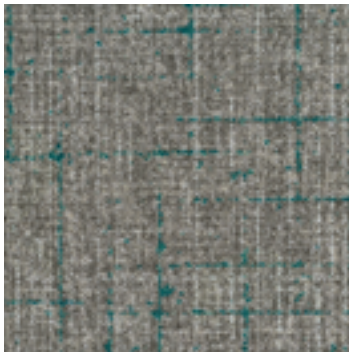


ISC209-118  
Blackened

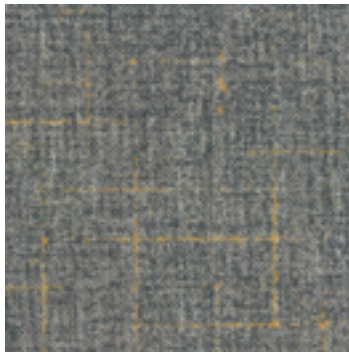
## Threaded Layer



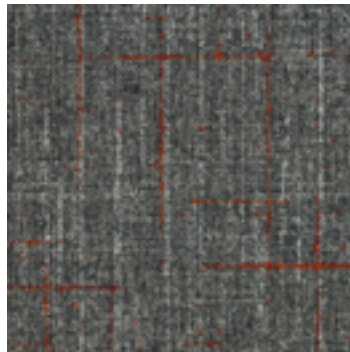
THL162-208-121  
Undertone with Sage



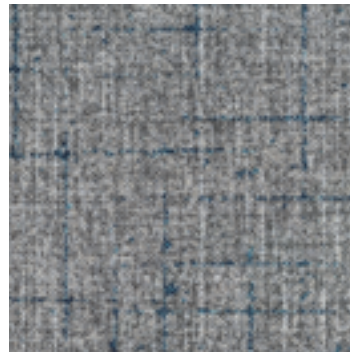
THL201-218-44  
Camel with Seafoam



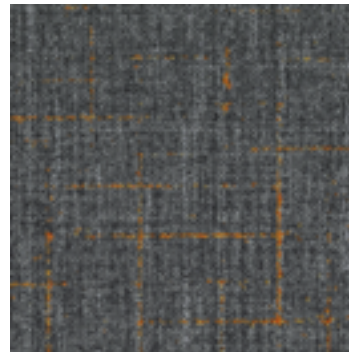
THL231-235-234  
Wool Blend with Ochre



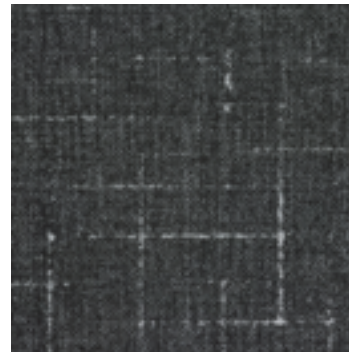
THL191-235-254  
Baked Beige with Brick Red



THL196-152-180  
Dove with Midnight Blue



THL189-6-153  
Tweed Coat with Sienna

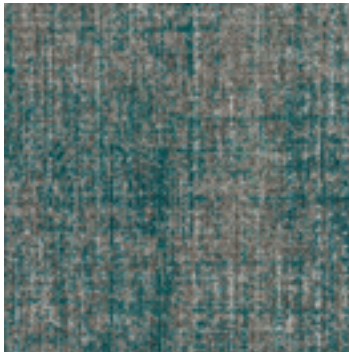


THL265-209-118  
Blackened with White

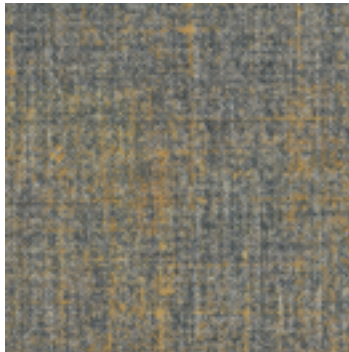
## Woven Color



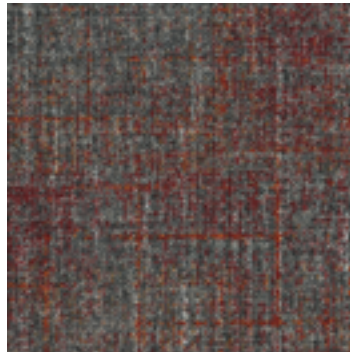
WOC162-208-121  
Undertone with Sage



WOC201-218-44  
Camel with Seafoam



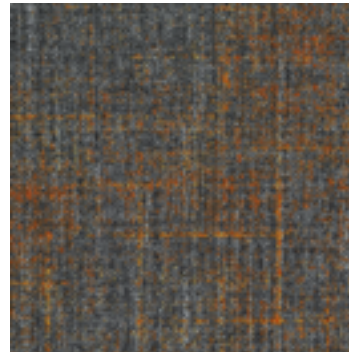
WOC231-235-234  
Wool Blend with Ochre



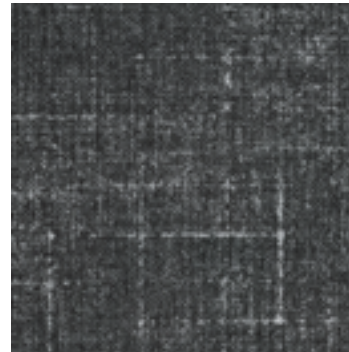
WOC191-235-254  
Baked Beige with Brick Red



WOC196-152-180  
Dove with Midnight Blue



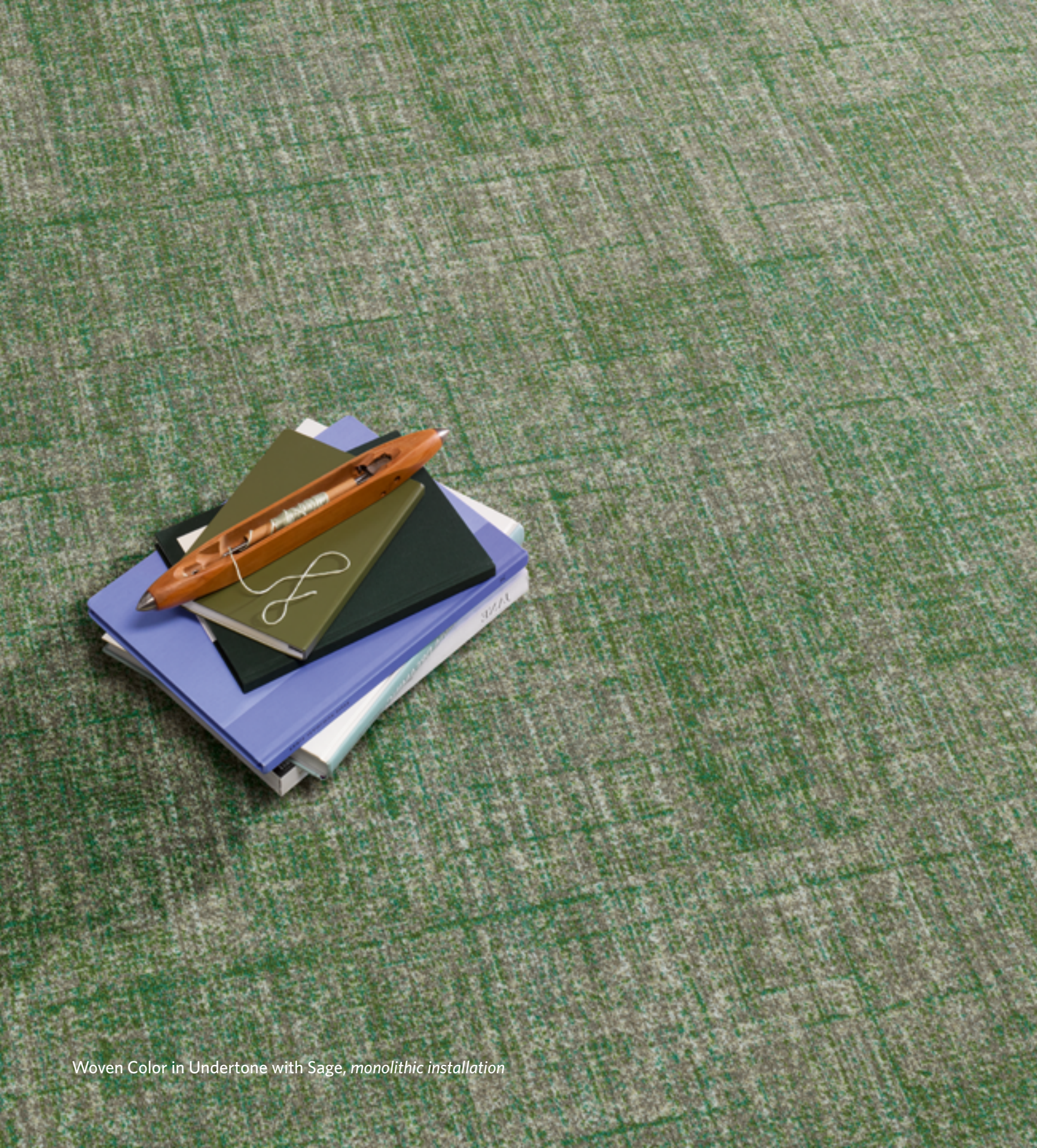
WOC189-6-153  
Tweed Coat with Sienna



WOC265-209-118  
Blackened with White



(from left to right)  
Threaded Layer in Undertone with Sage,  
In Stitches in Undertone,  
Woven Color in Undertone with Sage,  
*monolithic installation*



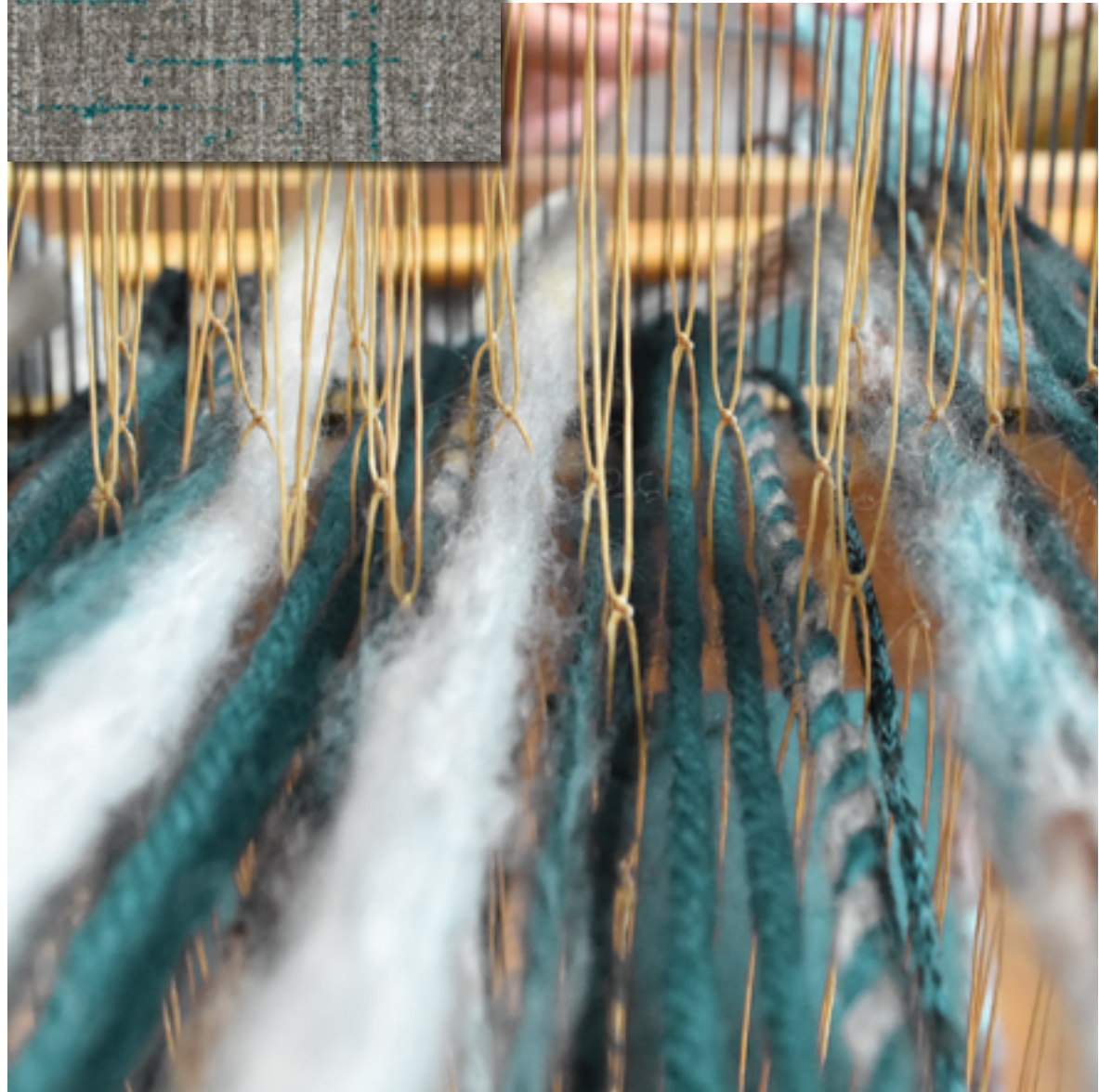
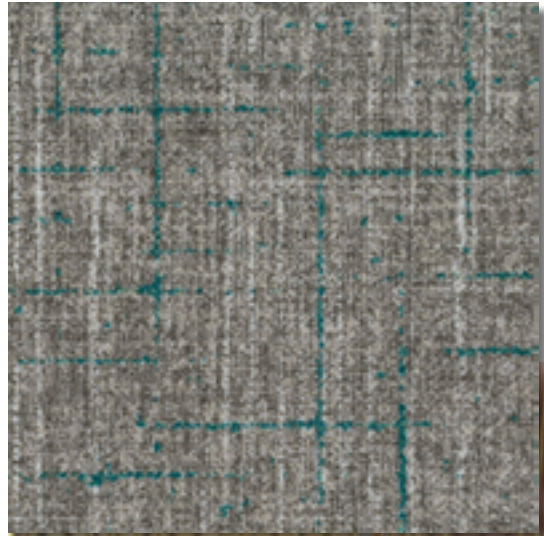
Woven Color in Undertone with Sage, *monolithic installation*







In Stitches in Camel, ashlar installation



Threaded Layer in Camel with Seafoam, monolithic installation

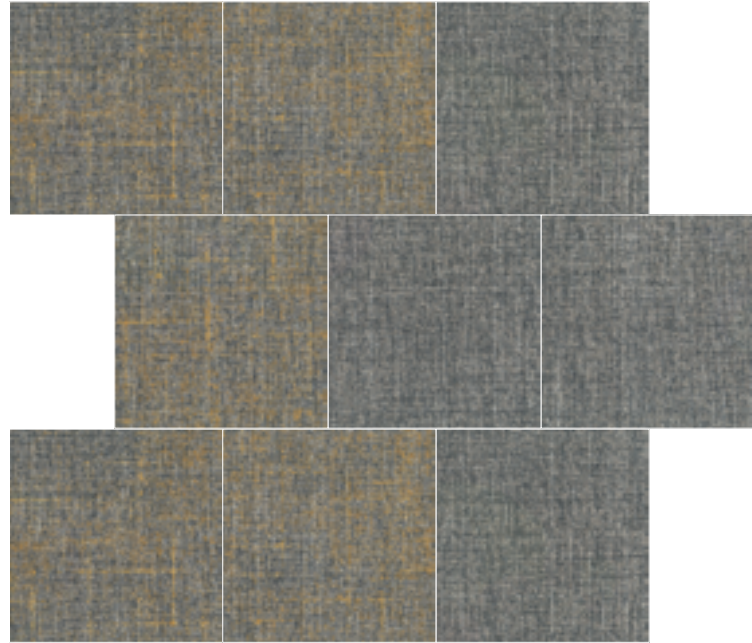


*In Stitches in Camel, Woven Color in Camel with Seafoam, monolithic installation*



Threaded Layer in Wool Blend with Ochre, *monolithic installation*

*installation*



ISC235-234  
Wool Blend



WOC231-235-234  
Wool Blend with Ochre



*In Stitches in Wool Blend, Woven Color in Wool Blend with Ochre, ashlar installation*



Threaded Layer in Baked Beige with Brick Red, monolithic installation



Woven Color in Baked Beige with Brick Red, *monolithic installation*





Work station - (from center to outer circle)  
Woven Color in Baked Beige with Brick Red,  
Threaded Layer in Baked Beige with Brick Red,  
Meeting room - In Stitches in Baked Beige,  
*custom installation*





Threaded Layer in Tweed Coat with Sienna, *monolithic installation*

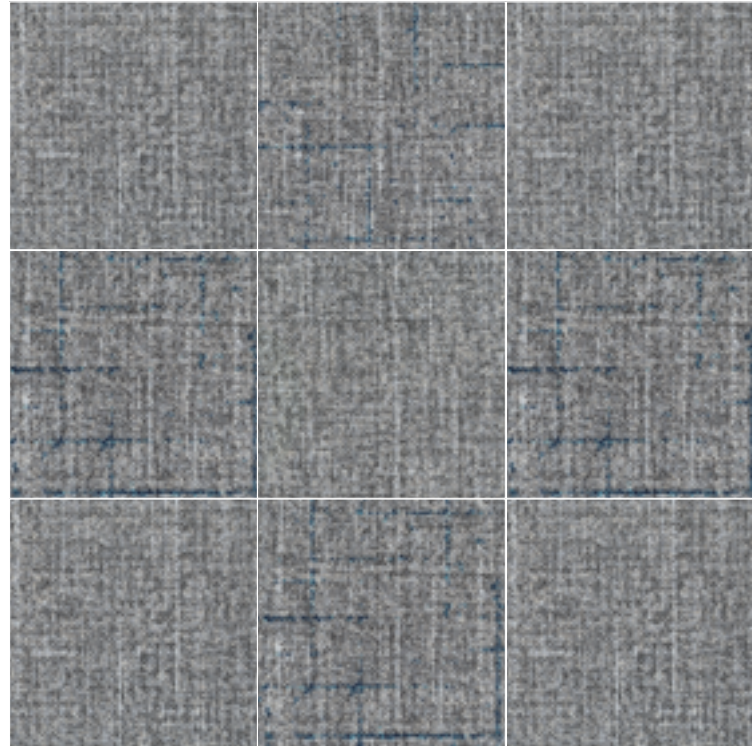


Woven Color in Tweed Coat with Sienna,  
Threaded Layer in Tweed Coat with Sienna,  
In Stitches in Tweed Coat,  
*monolithic installation*

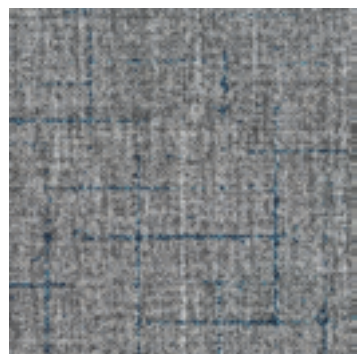


Woven Color in Dove with Midnight Blue, *monolithic installation*

installation



ISC152-180  
Dove



THL196-152-180  
Dove with Midnight Blue



Threaded Layer in Dove with Midnight Blue, In Stitches in Dove, *monolithic installation*



Meeting room and corridor - In Stitches in Dove, *monolithic installation*  
Collaboration area - Woven Color in Dove with Midnight Blue, *monolithic installation*



Threaded Layer in Blackened with White, *ashlar* installation



Collaboration area - Echoes in Mid Crust LT Azure,  
Corridor - Woven Color in Blackened with White, *monolithic installation*



Woven Color in Blackened with White, In Stitches in Blackened, *monolithic installation*



# M/PACT™

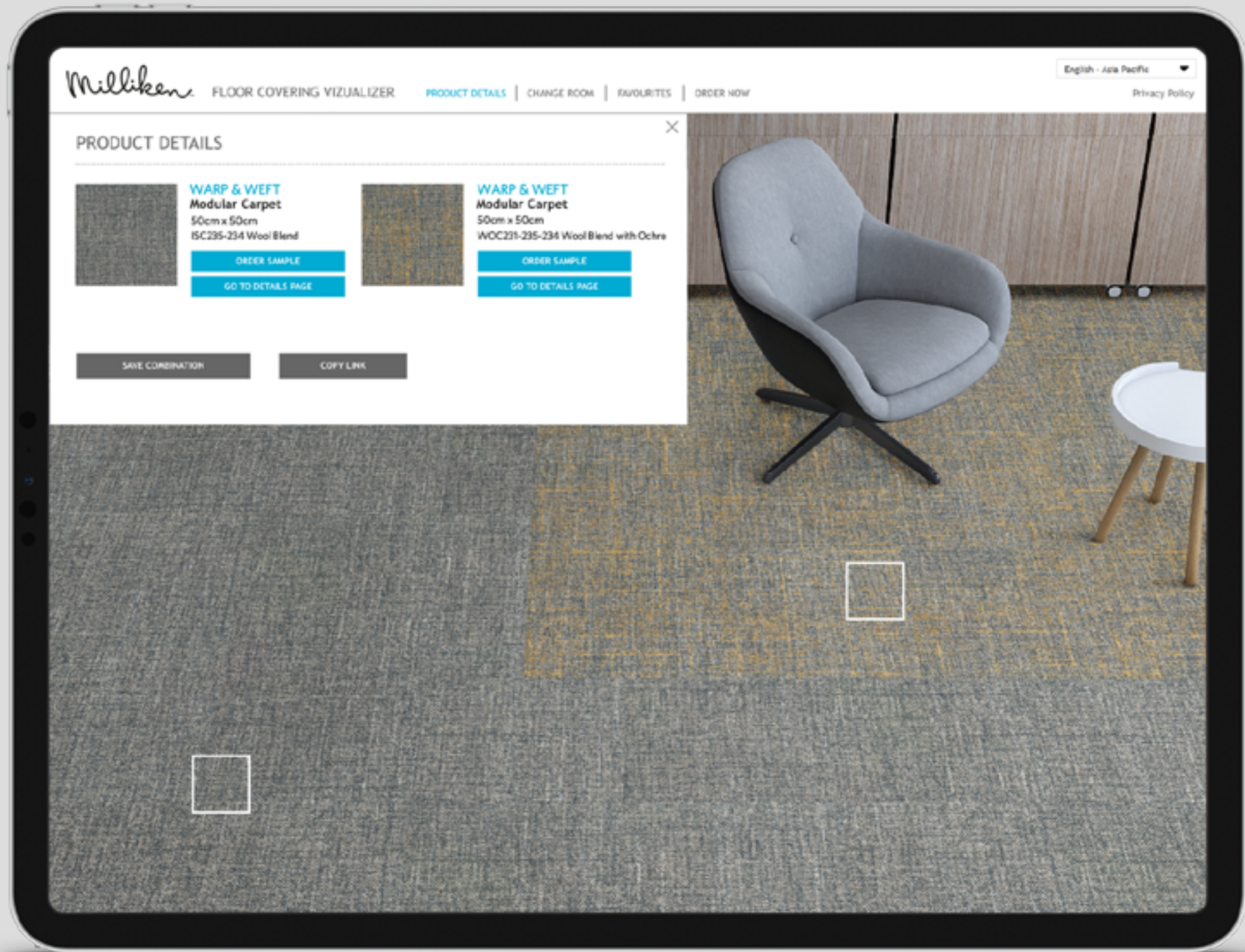
CARBON NEUTRAL PROGRAM

## A CARBON NEUTRAL COLLECTION

Climate change is one of the greatest threats facing humanity. Today, our carpet, LVT and entryway tiles are carbon neutral everywhere in the world. We invite you to learn more about the significant changes we've made, then let's work together to design a better future.

[LEARN MORE ►](#)

Collaboration area - Woven Color in Wool Blend with Ochre, *monolithic installation*  
Corridor - Firma in Ivory, *ashlar installation*



# VIEW WARP & WEFT IN YOUR SPACE

—  
Use the online visualiser to view different layouts of Terra. Simply upload a photograph of your space and let the visualiser do the rest.



## WARP & WEFT

In Stitches / Threaded Layer / Woven Color

### SPECIFICATION

**Construction** - Tufted, Textured Loop

**Tile Size** - 50cm x 50cm

**Face Fiber** - 100% Milliken-Certified Nylon

**Dye Method** - Millitron®

**Standard Backing** - PVC-Free WellBAC™ Comfort  
Available with TractionBack®

**Nominal Total Thickness** - 8.4mm ± 10%

**Flammability** - ≥ 0.45 (Class I)

**Texture Appearance Retention Rating (TARR)** - Severe

**Indoor Air Quality - CRI Green Label Plus™** - GLP3237, Carpet Category 5Y

### 技术指标

结构 - 簇绒织造圈绒结构

产品尺寸 - 50 厘米 X 50 厘米

表层纤维 - 100% 美利肯认证尼龙

染色技术 - Millitron® 数码针染技术

标准底垫 - 不含 PVC 之 WellBAC™ Comfort 舒适软底  
可选装 TractionBack® 免胶

额定总厚度 - 8.4 毫米 ± 10%

阻燃性 - ≥ 0.45 (一级)

外观保持等级 (TARR) - 重度商业使用

室内空气质量 CRI Green Label Plus™ - GLP3237, 地毯类别 5Y

### 安装方式:

#### Installation Method



**Monolithic**  
同一方向安装



**Ashlar**  
左右错半铺装

### TractionBack®

Simplify your modular installation with Milliken's patented TractionBack®, an innovative backing system that is faster, more cost efficient, and environmentally superior to wet adhesives and peel-and-stick carpet tile.

[www.millikencarpet.com](http://www.millikencarpet.com)



**Declare.**



### Follow us on social media:



WeChat



Instagram

Milliken

Website