



QUICK SHIP



PRICE

Milliken™

The easiest Quick Ship program in the business.

With a 3 day lead time, Milliken's Quick Ship program offers fast delivery of your favorite products. A total of 122 unique SKU's offers inspirational shopping, allowing you to browse by color or style. Available in tile and broadloom, and affordable price points, Milliken's Quick Ship program is the best choice for trusted, fast delivery.

SHOP BY COLOR

GREY	4-15
BLACK	16-17
BLUE	18-23
BROWN	24-35

SHOP BY STYLE

LINEAR	38-45
GEOMETRIC	46-53
ORGANIC	54-61
SOLID	62-63



LIFETIME WARRANTIES



CUSHION BACKING



STAINSMART®



SUSTAINABLE



NO MINIMUMS



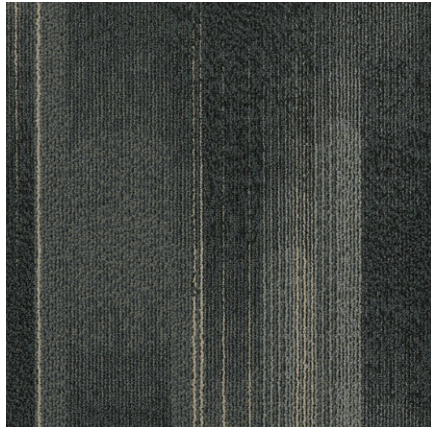
MOISTURE MANAGEMENT

Shades of grey.

Browse our collection of distinct monochromes.

Featuring soft grey hues, charcoal and black, this color family includes an extensive set of monochrome variety.

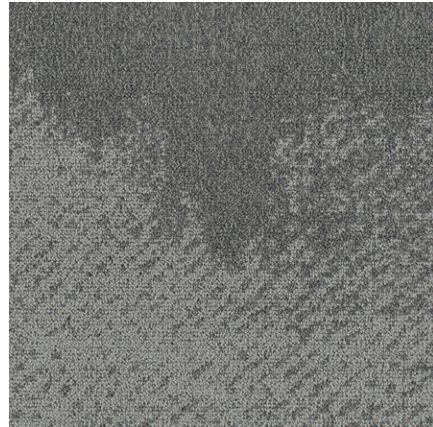




SOUTHERN ANALOG, PANORAMIC
PA117 VIGNETTE



FORMWORK
FWK120 FOUNDATION



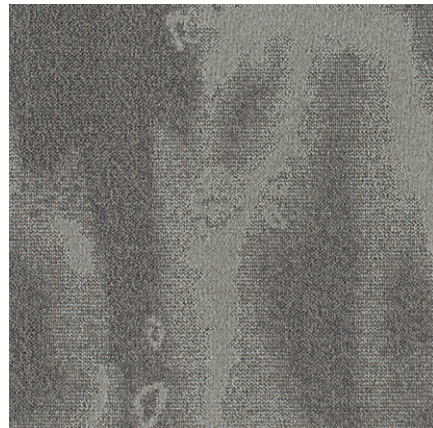
SURFACE STUDY, WASHED
WAS173-152 QUARTZ



SOUTHERN ANALOG, VIEWFINDER
VF217 VIGNETTE



FORMWORK
FWK67 TRUSS



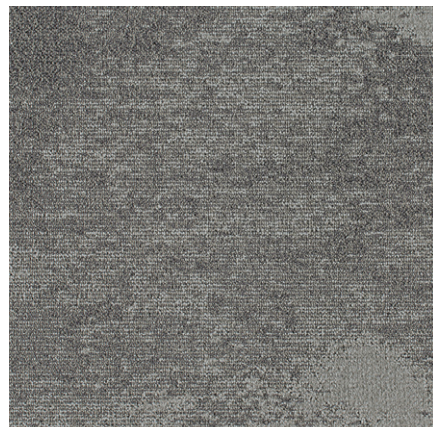
SURFACE STUDY, BURNED
BUR173-152 QUARTZ



SOUTHERN ANALOG, VOLTAGE
VT317 VIGNETTE



SOUTHERN ANALOG, PINHOLE
PH417 VIGNETTE

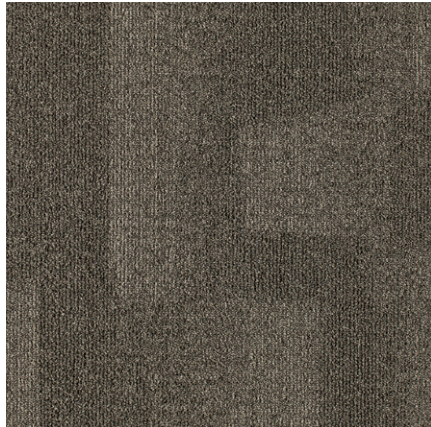


SURFACE STUDY, DISTRESSED
DIS173-152 QUARTZ

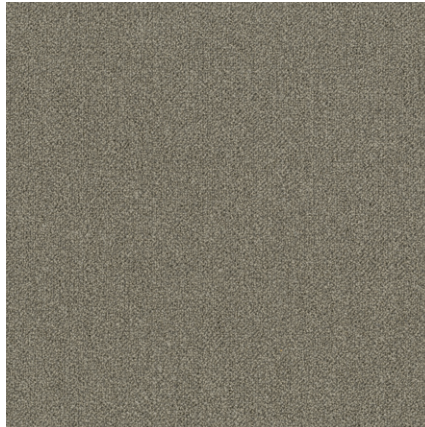


Surface Study, Distressed in Quartz. Ashlar tile installation.

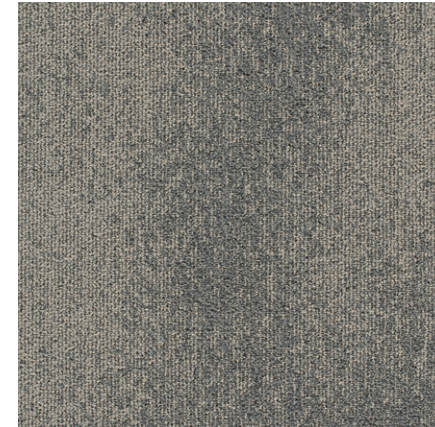




NORDIC STORIES, HIDDEN PLAINS
HDP122-120 SPIRITLAND



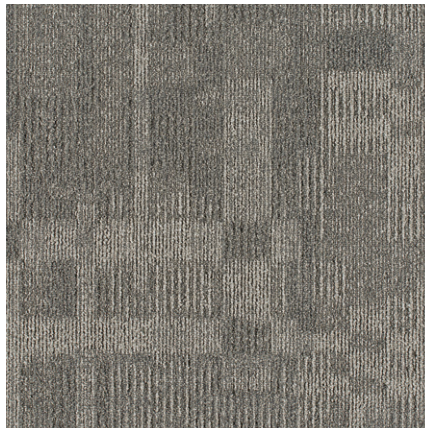
FORMWORK
FWK122 PIER



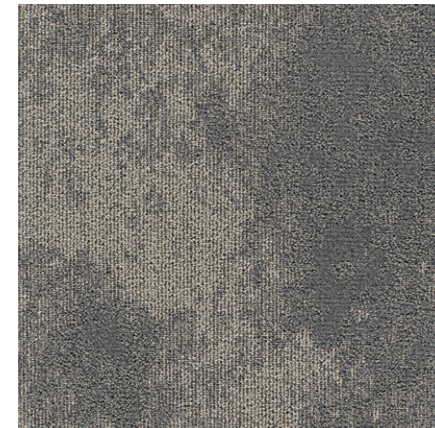
WHALE SONG, BELUGA
BEL173-174 BARNACLE



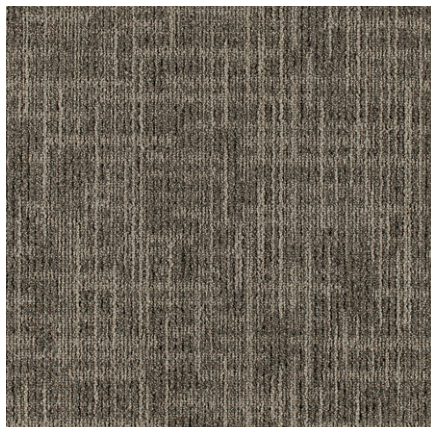
NORDIC STORIES, ISOGRAD
IGD122-120 SPIRITLAND



GHOST ARTIST, FACADE
FAC122-120 CLOAK



WHALE SONG, HUMPBACK
HUM173-174 BARNACLE



NORDIC STORIES, TECTONIC
TTC122-120 SPIRITLAND



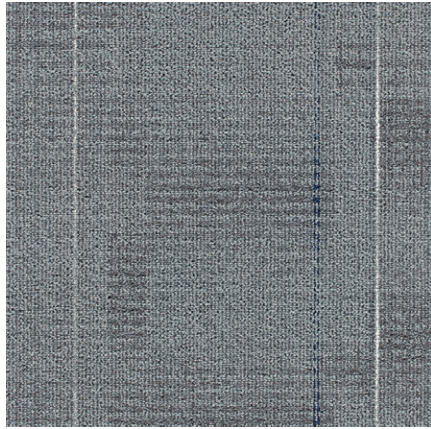
WHALE SONG, NARWHAL
NRW173-174 BARNACLE



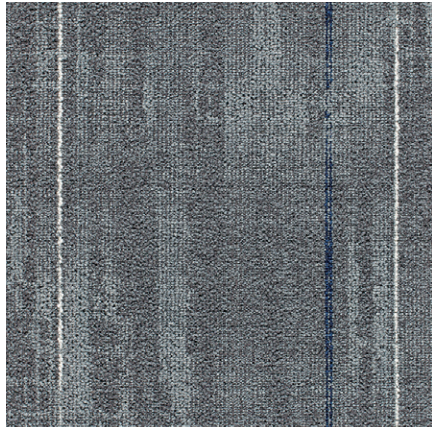
WHALE SONG, ORCA
ORC173-174 BARNACLE



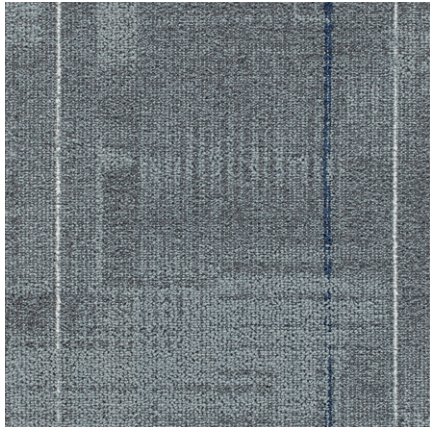
Ghost Artist, Facade in Cloak. Monolithic tile installation.



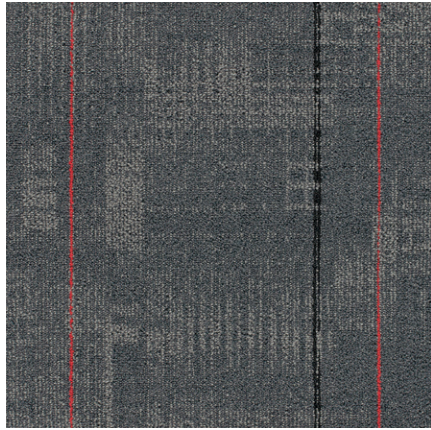
JOURNAL, LINE BY LINE
LNB19-106 COMPOSE WITH QUARTZ
AND NAVY ACCENTS



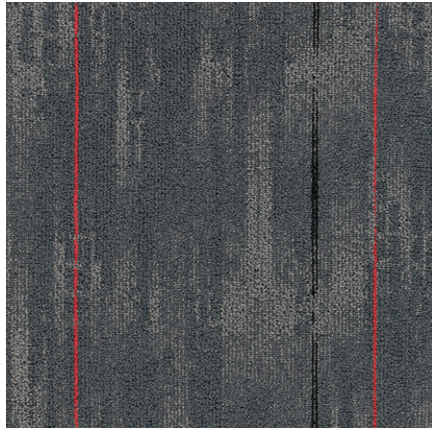
JOURNAL, FREEHAND
FRE19-106 COMPOSE WITH QUARTZ
AND NAVY ACCENTS



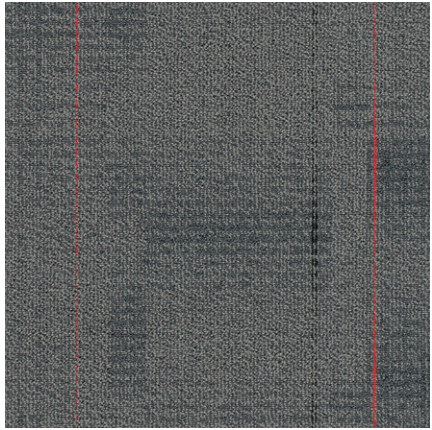
JOURNAL, INSCRIPTION
INS19-106 COMPOSE WITH QUARTZ
AND NAVY ACCENTS



JOURNAL, INSCRIPTION
INS154 QUILL WITH PUNCH AND
CARBON ACCENTS



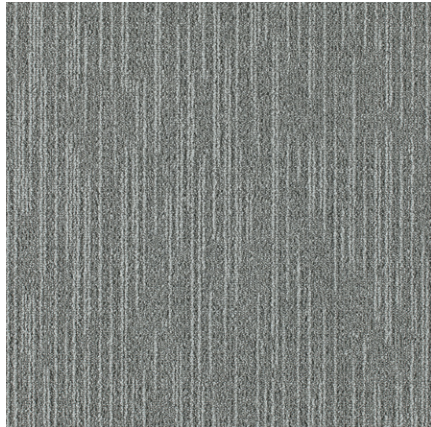
JOURNAL, FREEHAND
FRE154 QUILL WITH PUNCH AND
CARBON ACCENTS



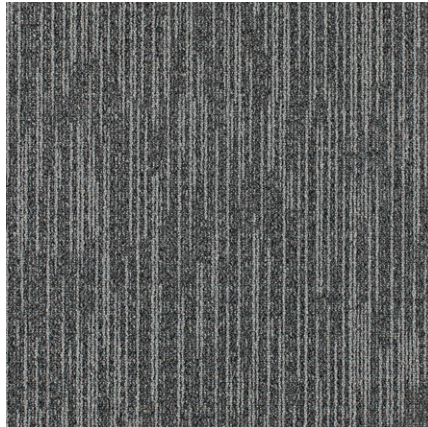
JOURNAL, LINE BY LINE
LNB154 QUILL WITH PUNCH AND
CARBON ACCENTS



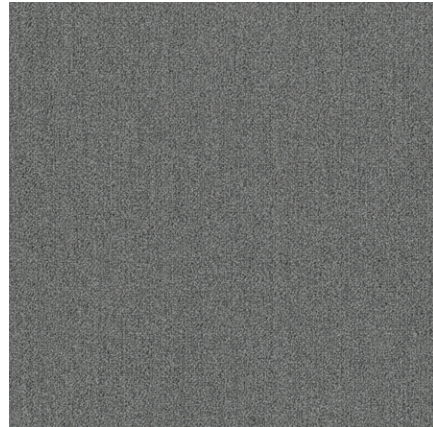
Journal, Freehand in Quill with Punch and Carbon accents. Ashlar tile installation.



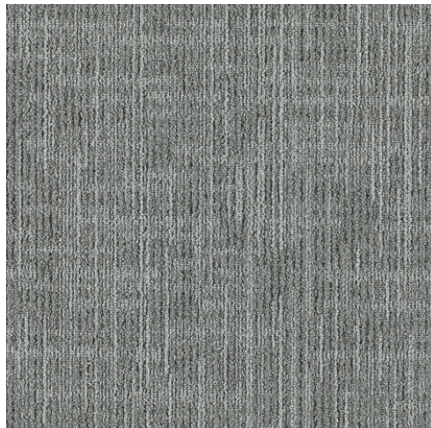
NORDIC STORIES, ISOGRAD
IGD108-13 FJORD



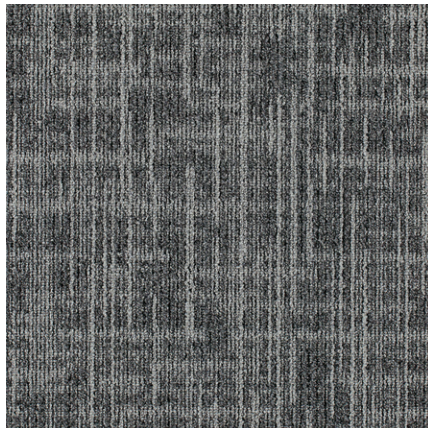
NORDIC STORIES, ISOGRAD
IGD13-119 ESKER



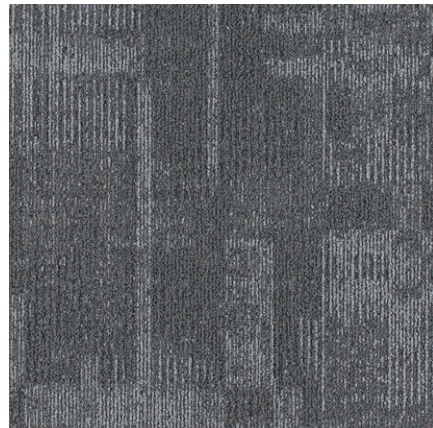
FORMWORK
FWK13 PILLAR



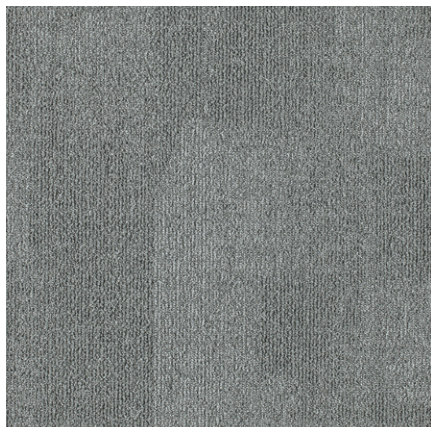
NORDIC STORIES, TECTONIC
TTC108-13 FJORD



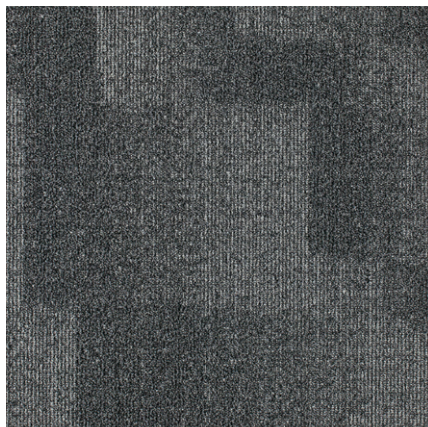
NORDIC STORIES, TECTONIC
TTC13-119 ESKER



GHOST ARTIST, FACADE
FAC13-118 OBSCURA



NORDIC STORIES, HIDDEN PLAINS
HDP108-13 FJORD



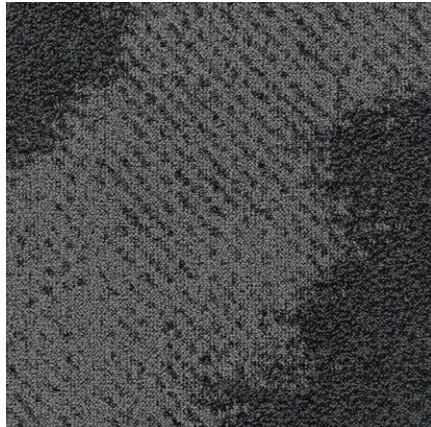
NORDIC STORIES, HIDDEN PLAINS
HDP13-119 ESKER



FORMWORK
FWK118 PLINTH



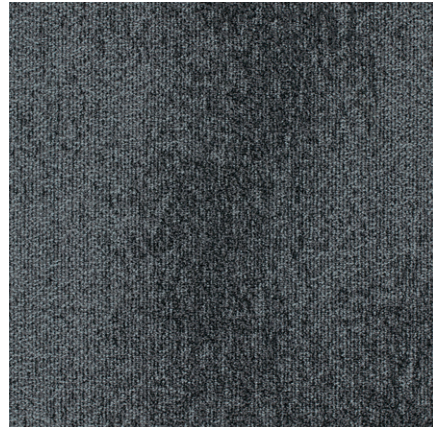
Formwork in Plinth. Vertical ashlar tile installation.



SURFACE STUDY, WASHED
WAS119-174 CHARRED



WHALE SONG, NARWHAL
NRW119-106 MARITIME



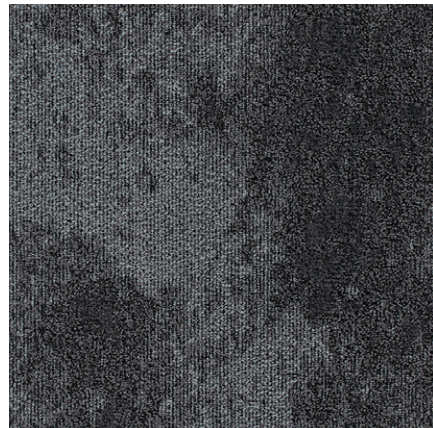
WHALE SONG, BELUGA
BEL119-106 MARITIME



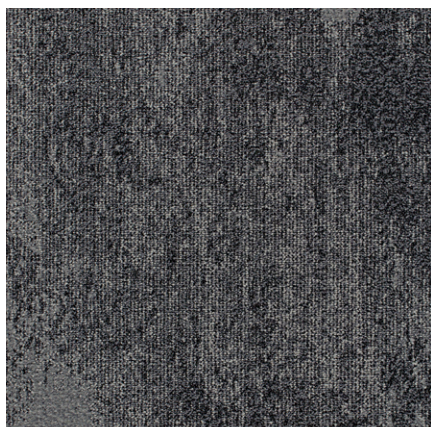
SURFACE STUDY, BURNED
BUR119-174 CHARRED



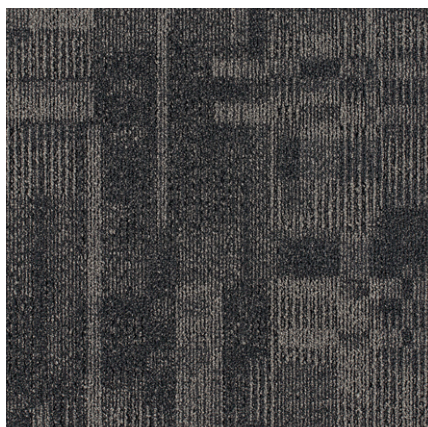
FORMWORK
FWK79 SPAR



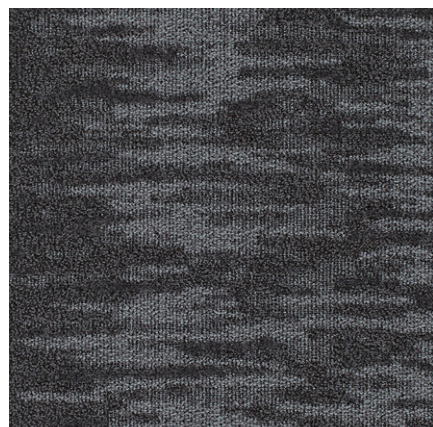
WHALE SONG, HUMPBACK
HUM119-106 MARITIME



SURFACE STUDY, DISTRESSED
DIS119-174 CHARRED



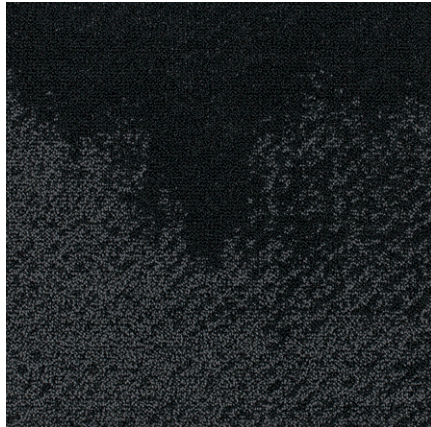
GHOST ARTIST, FACADE
FAC133-120 CONCEAL



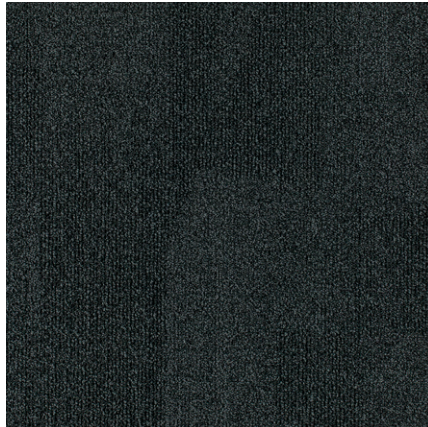
WHALE SONG, ORCA
ORC119-106 MARITIME



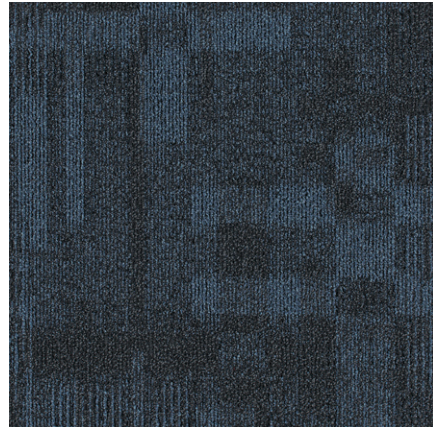
Whale Song, Orca in Maritime. Ashlar tile installation.



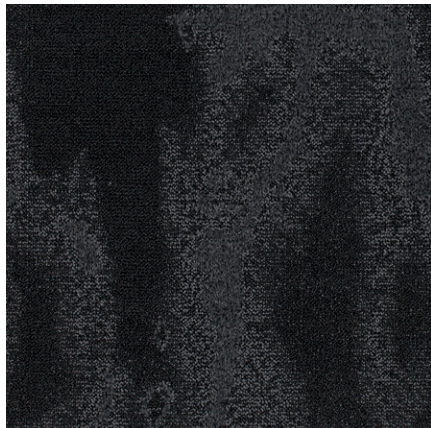
SURFACE STUDY, WASHED
WAS154-133 TAR



NORDIC STORIES, HIDDEN PLAINS
HDP119-27 ASH BLANKET



GHOST ARTIST, FACADE
FAC27-52 STEALTH



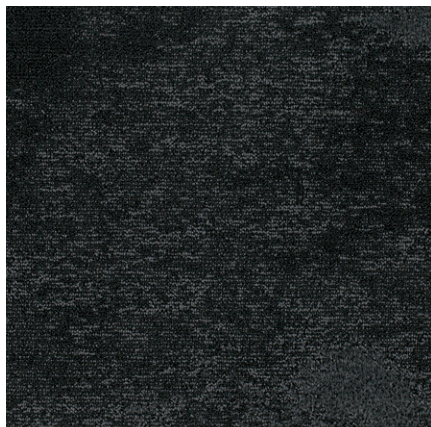
SURFACE STUDY, BURNED
BUR154-133 TAR



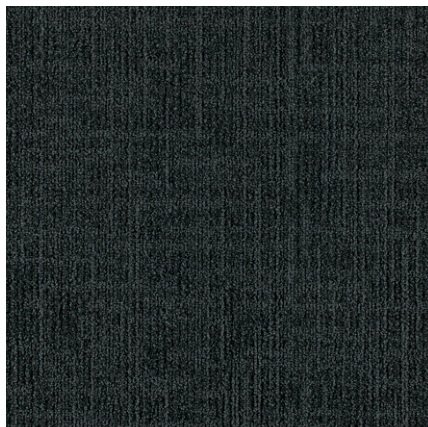
NORDIC STORIES, ISOGRAD
IGD119-27 ASH BLANKET



FORMWORK
FWK133 VAULT



SURFACE STUDY, DISTRESSED
DIS154-133 TAR



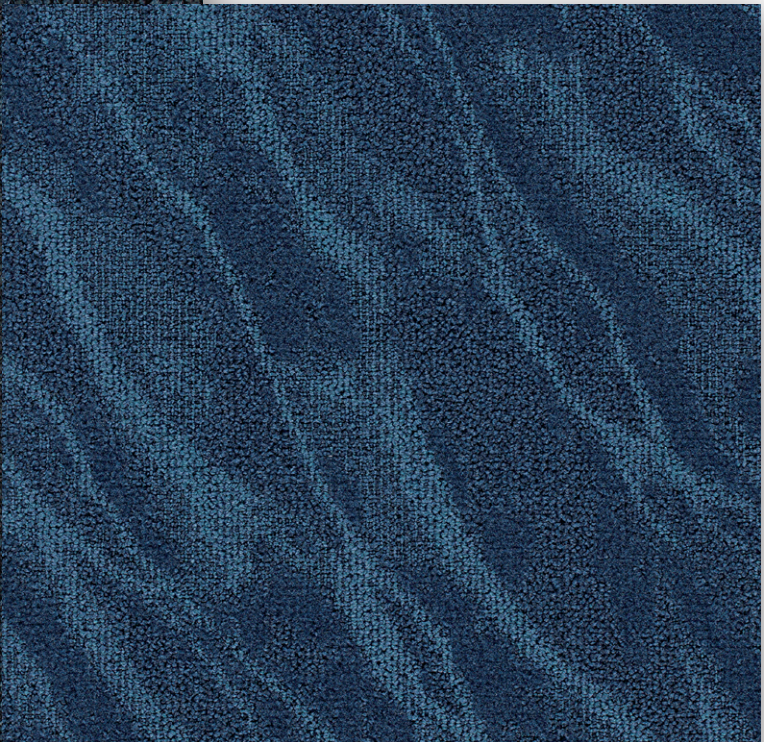
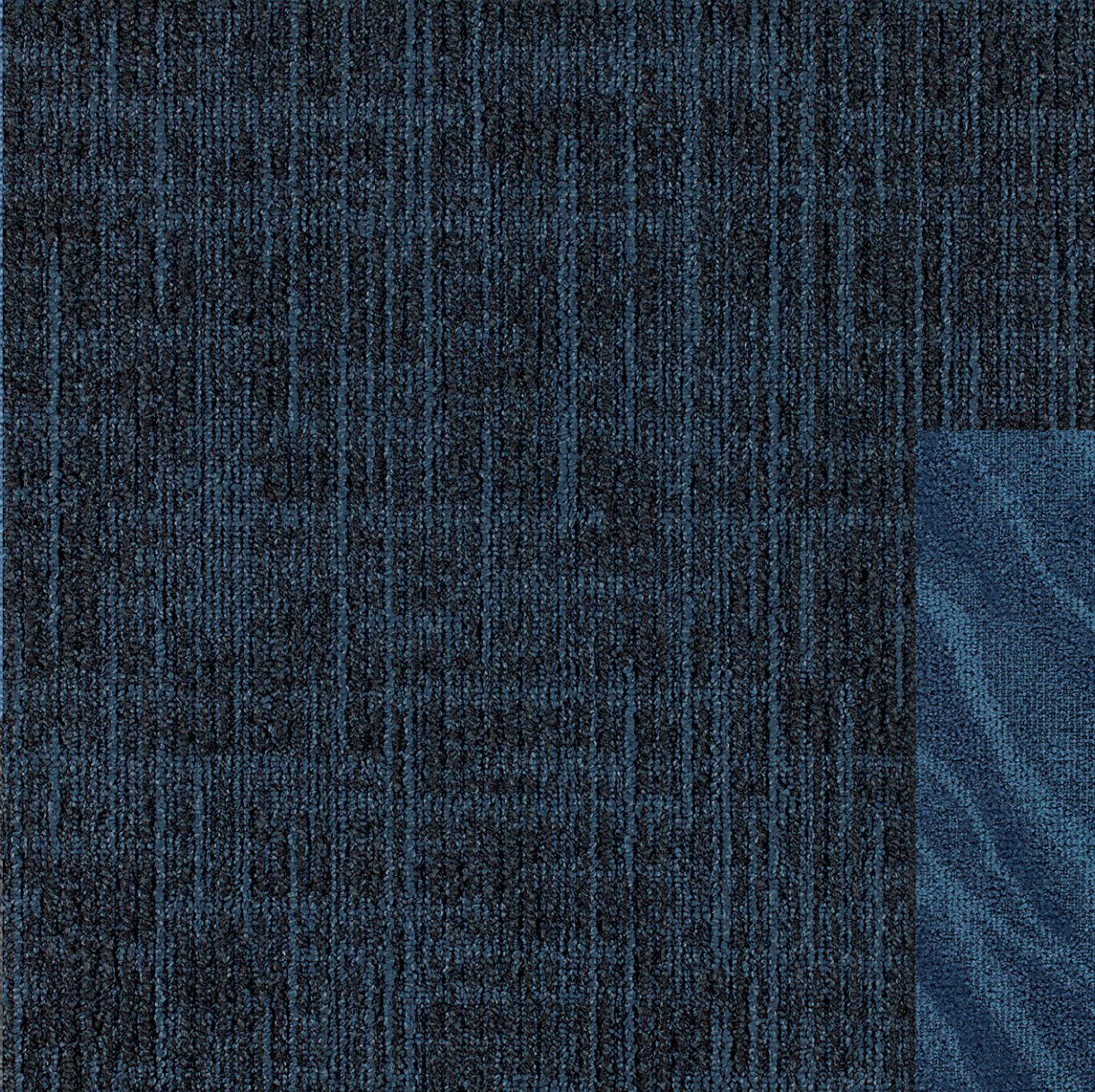
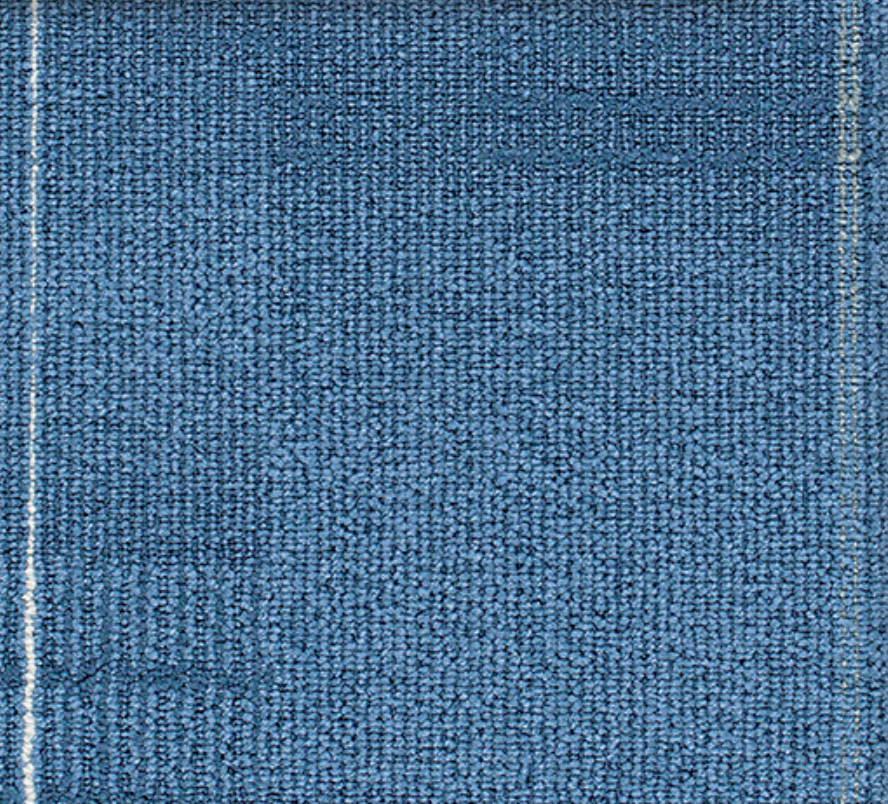
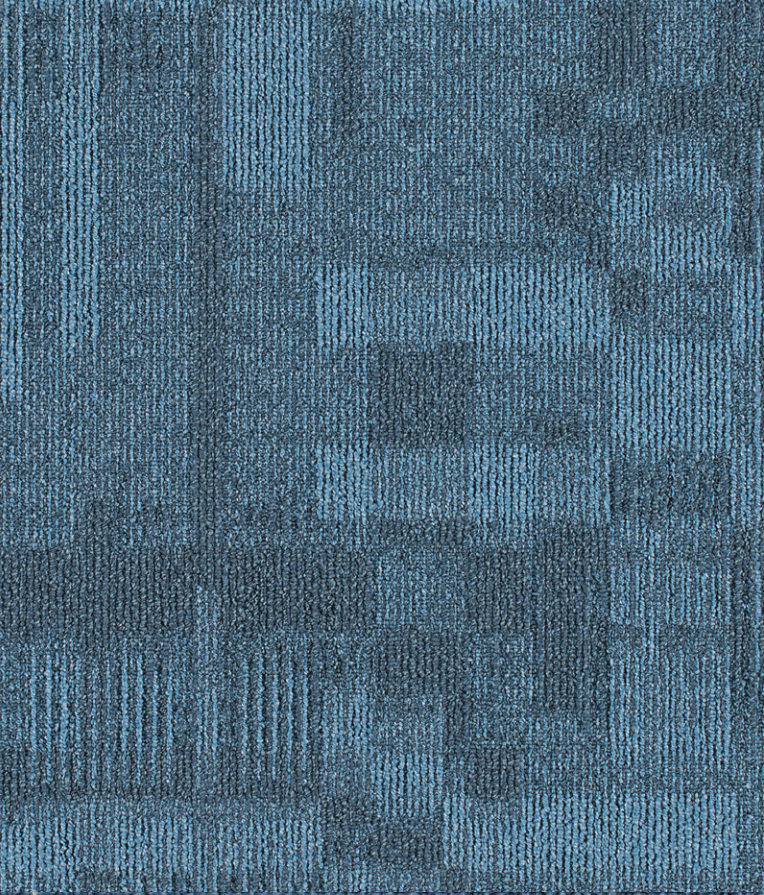
NORDIC STORIES, TECTONIC
TTC119-27 ASH BLANKET



FORMWORK
FWK27 PITCH



Nordic Stories, Hidden Plains in Ash Blanket. Monolithic tile installation.



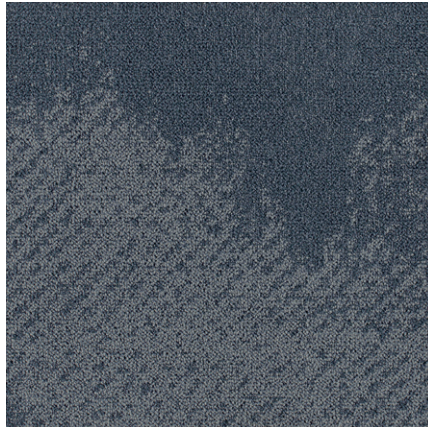
Immerse yourself in a sea of blues.

Discover our selection of inspired blue tones.

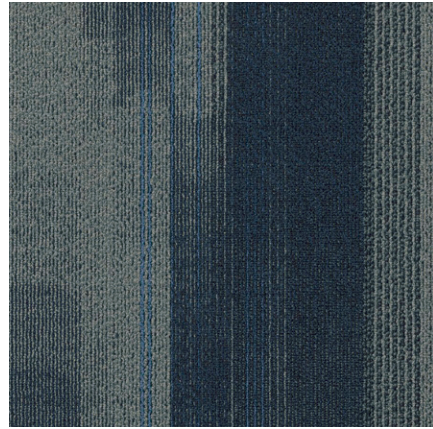
Offering rich aquamarines to opulent navies, this selection of blues is both vibrant and exciting.



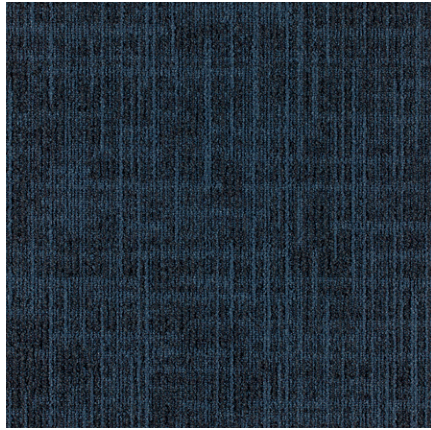
NORDIC STORIES, ISOGRAD
IGD27-52 ROCK POWDER



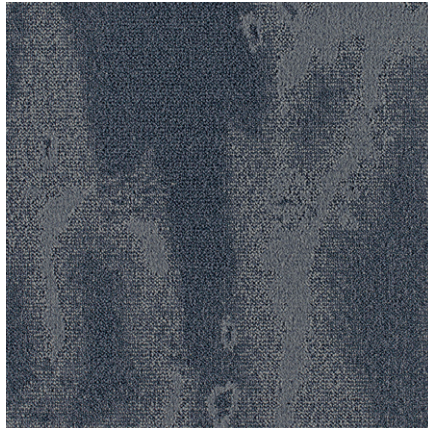
SURFACE STUDY, WASHED
WAS106 EDDY



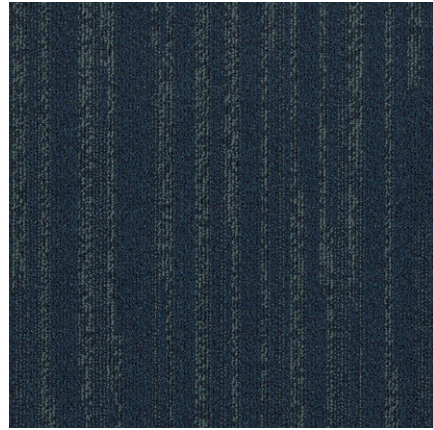
SOUTHERN ANALOG, PANORAMIC
PA118 ZOOM



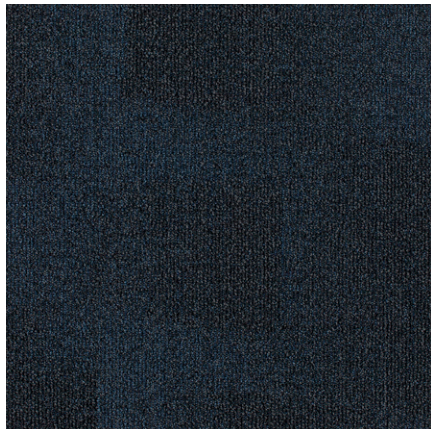
NORDIC STORIES, TECTONIC
TTC27-52 ROCK POWDER



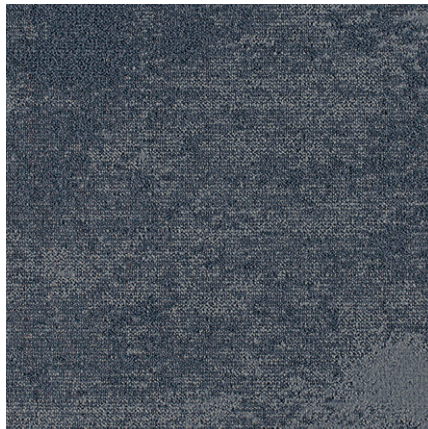
SURFACE STUDY, BURNED
BUR106 EDDY



SOUTHERN ANALOG, VOLTAGE
VT318 ZOOM



NORDIC STORIES, HIDDEN PLAINS
HDP27-52 ROCK POWDER



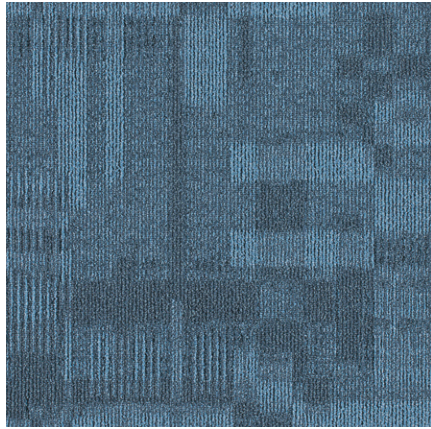
SURFACE STUDY, DISTRESSED
DIS106 EDDY



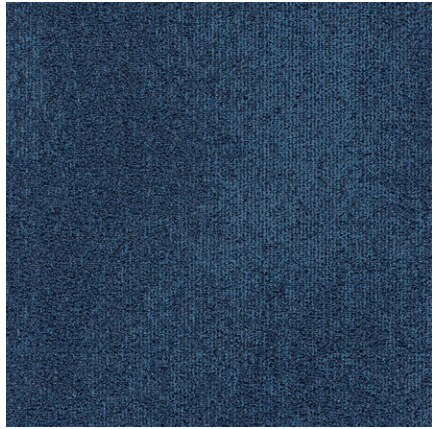
SOUTHERN ANALOG, VIEWFINDER
VF218 ZOOM



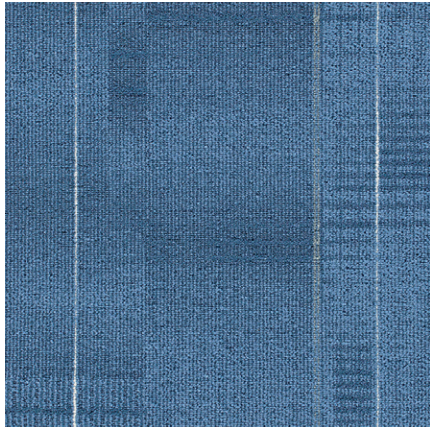
Southern Analog, Panoramic In Zoom. Monolithic tile installation.



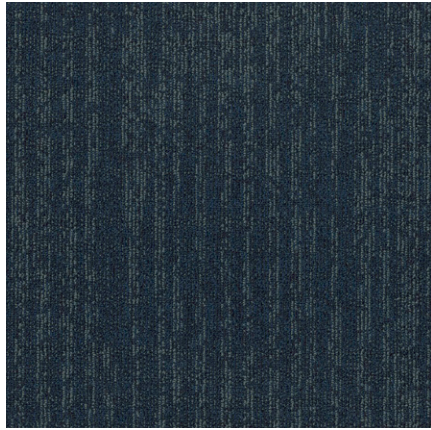
GHOST ARTIST, FACADE
FAC52-126 ENSCONCE



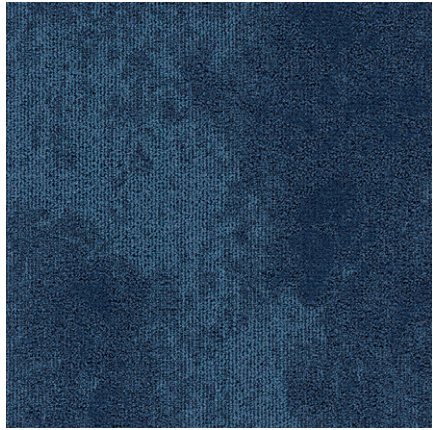
WHALE SONG, BELUGA
BEL19 COASTLINE



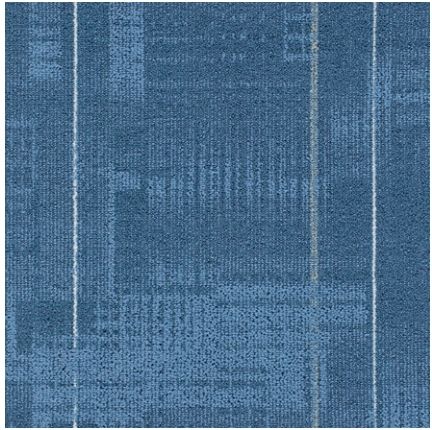
JOURNAL, LINE BY LINE
LNB157 SCROLL WITH LEAD AND
GRAPHITE ACCENTS



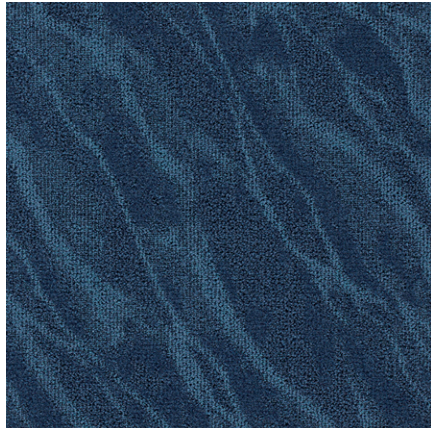
SOUTHERN ANALOG, PINHOLE
PH418 ZOOM



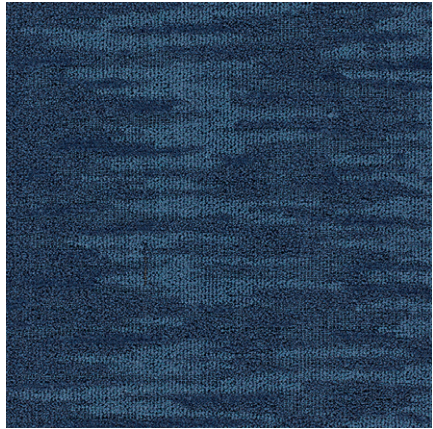
WHALE SONG, HUMPBACK
HUM19 COASTLINE



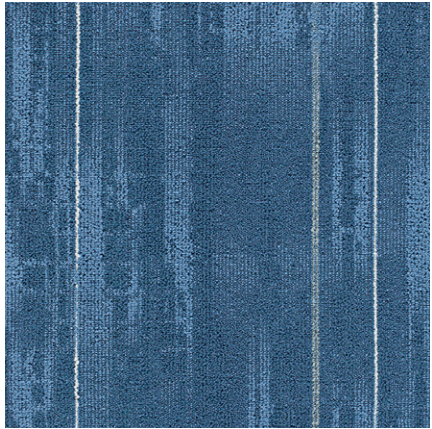
JOURNAL, INSCRIPTION
INS157 SCROLL WITH LEAD AND
GRAPHITE ACCENTS



WHALE SONG, NARWHAL
NRW19 COASTLINE



WHALE SONG, ORCA
ORC19 COASTLINE



JOURNAL, FREEHAND
FRE157 SCROLL WITH LEAD AND
GRAPHITE ACCENTS



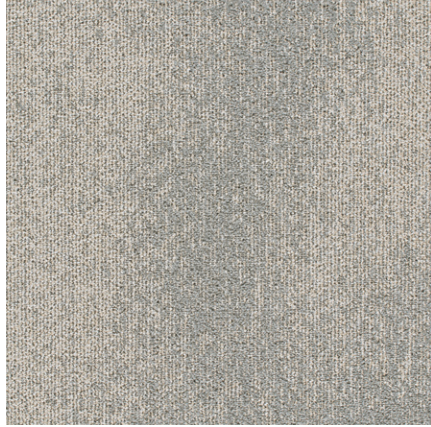
Whale Song, Humpback in Coastline. Ashlar tile installation.

Add depth with tones of brown.

Explore our selection of natural, earthy tones.

From bright sand tones to rich chocolates, this colorway includes a wide-ranging run of neutrals.





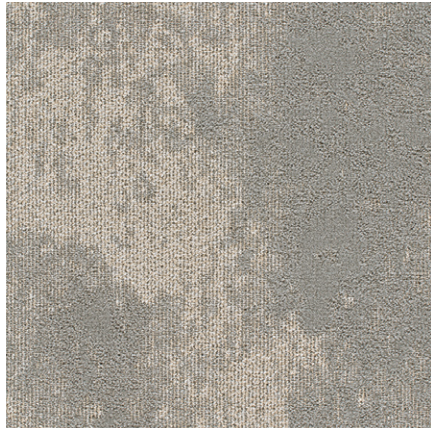
WHALE SONG, BELUGA
BEL108-204 BRINY



SOUTHERN ANALOG, VOLTAGE
VT309 DIFFUSE



SOUTHERN ANALOG, VIEWFINDER
VF209 DIFFUSE



WHALE SONG, HUMPBACK
HUM108-204 BRINY



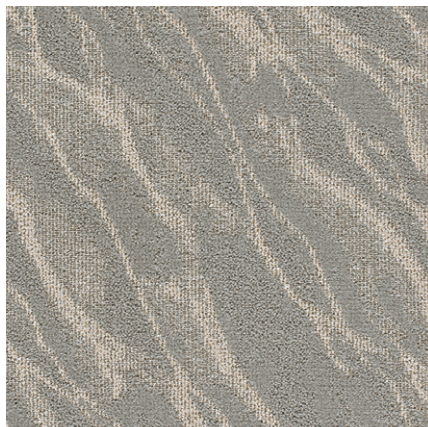
SOUTHERN ANALOG, PINHOLE
PH409 DIFFUSE



SOUTHERN ANALOG, PANORAMIC
PA109 DIFFUSE



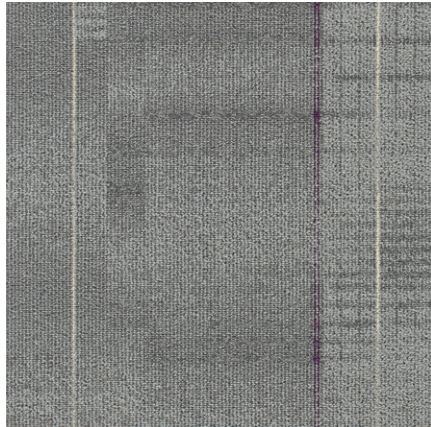
WHALE SONG, ORCA
ORC108-204 BRINY



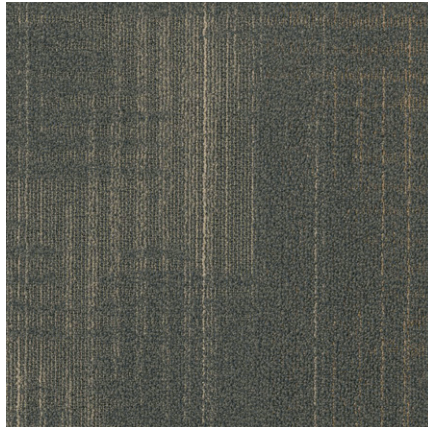
WHALE SONG, NARWHAL
NRW108-204 BRINY



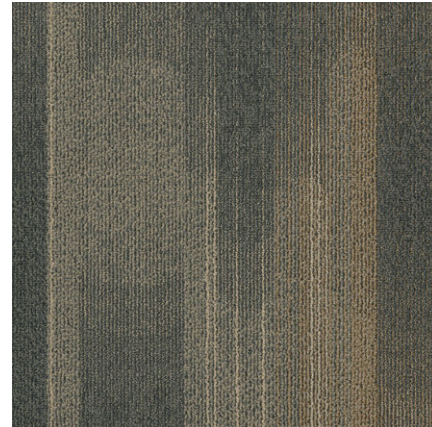
Whale Song, Humpback in Briny. Monolithic tile installation.



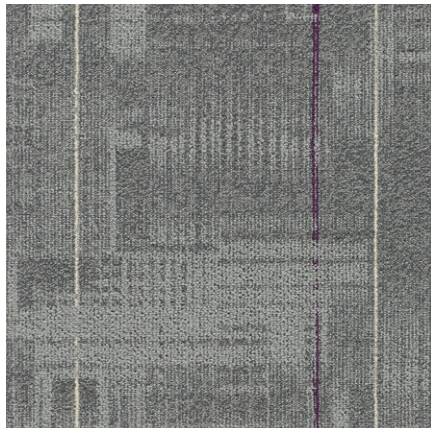
JOURNAL, LINE BY LINE
LNB173-152 MANUSCRIPT WITH
CHAMOMILE AND PLUM ACCENTS



SOUTHERN ANALOG, VIEWFINDER
VF215 TILT



SOUTHERN ANALOG, PANORAMIC
PA115 TILT



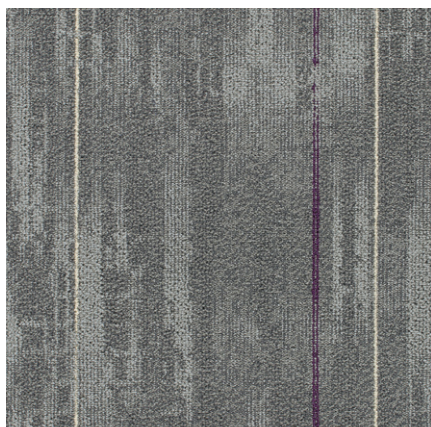
JOURNAL, INSCRIPTION
INS173-152 MANUSCRIPT WITH
CHAMOMILE AND PLUM ACCENTS



SOUTHERN ANALOG, VOLTAGE
VT315 TILT



GHOST ARTIST, FACADE
FAC94-96 UMBRA



JOURNAL, FREEHAND
FRE173-152 MANUSCRIPT WITH
CHAMOMILE AND PLUM ACCENTS



SOUTHERN ANALOG, PINHOLE
PH415 TILT



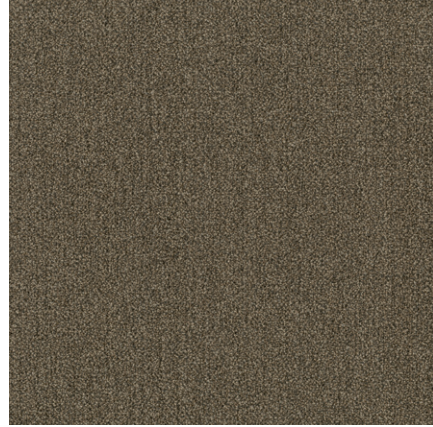
Journal, Inscription in Manuscript with Chamomile and Plum accents. Ashlar tile installation.



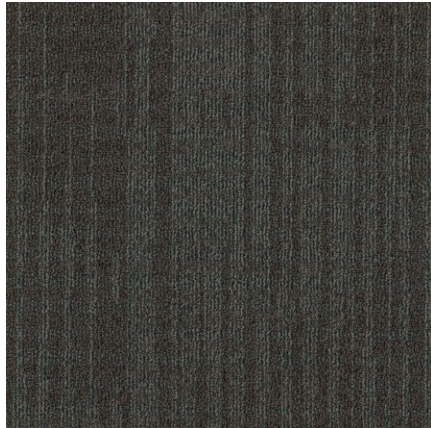
SOUTHERN ANALOG, VIEWFINDER
VF203 MIXER



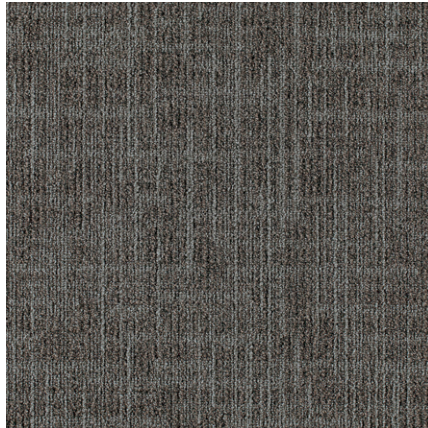
NORDIC STORIES, ISOGRAD
IGD67-59 LAHAR



FORMWORK
FWK94 WAINSCOT



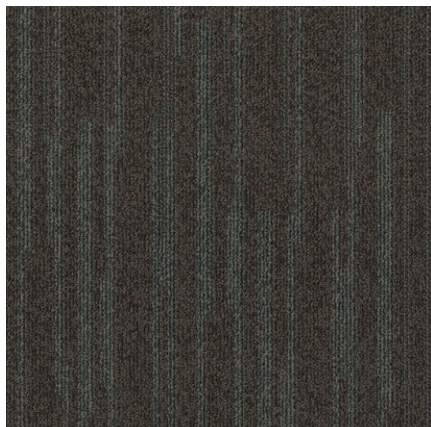
SOUTHERN ANALOG, PINHOLE
PH403 MIXER



NORDIC STORIES, TECTONIC
TTC67-59 LAHAR



SOUTHERN ANALOG, PANORAMIC
PA103 MIXER



SOUTHERN ANALOG, VOLTAGE
VT303 MIXER



NORDIC STORIES, HIDDEN PLAINS
HDP67-59 LAHAR



FORMWORK
FWK59 RENDER



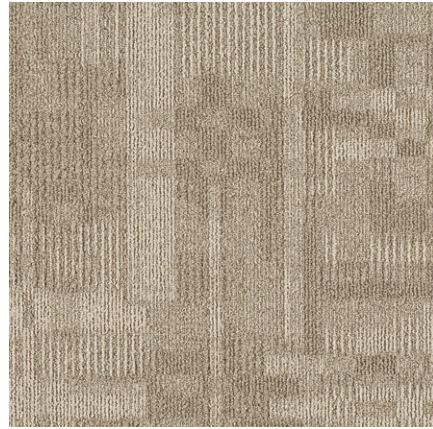
Nordic Stories, Tectonic in Lahar. Monolithic tile installation.



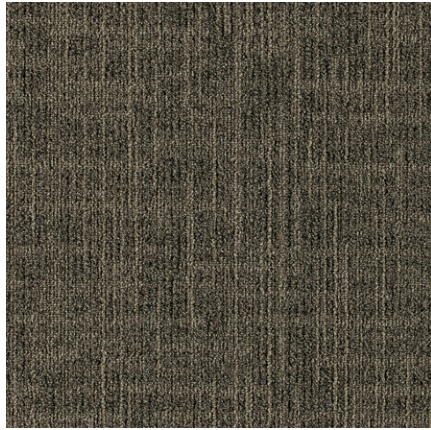
NORDIC STORIES, ISOGRAD
IGD94-59 NORSE



NORDIC STORIES, ISOGRAD
IGD124-94 SANDPIPER



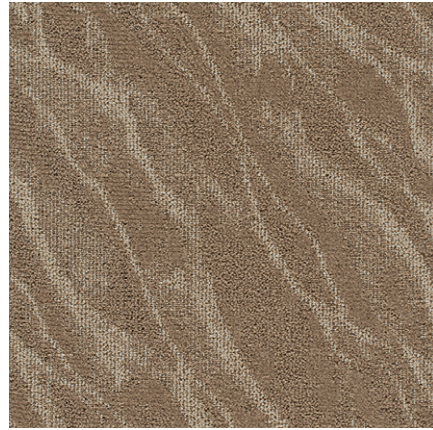
GHOST ARTIST, FACADE
FAC15-124 VISAGE



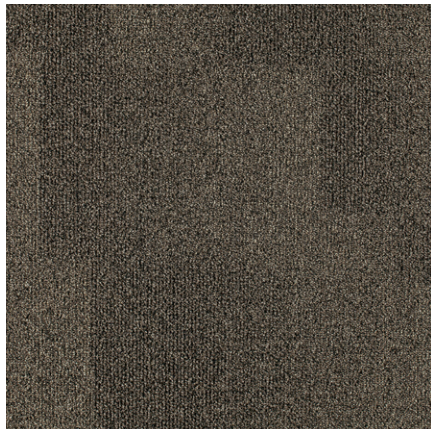
NORDIC STORIES, TECTONIC
TTC94-59 NORSE



NORDIC STORIES, TECTONIC
TTC124-94 SANDPIPER



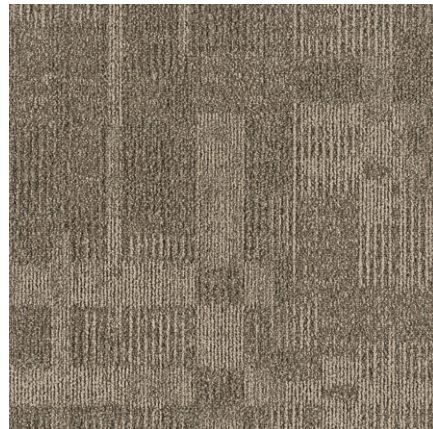
WHALE SONG, NARWHAL
NRW121-176 KRILL



NORDIC STORIES, HIDDEN PLAINS
HDP94-59 NORSE



NORDIC STORIES, HIDDEN PLAINS
HDP124-94 SANDPIPER



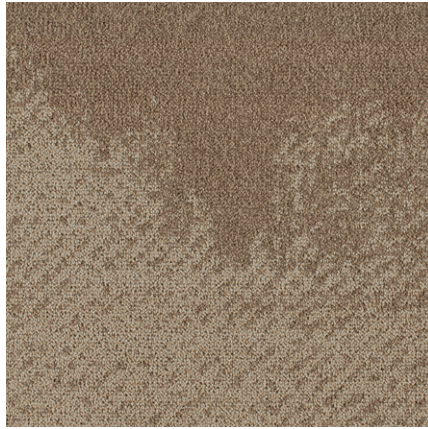
GHOST ARTIST, FACADE
FAC124-94 CACHE



Ghost Artist, Facade in Visage with Cache accents. Ashlar tile installation.



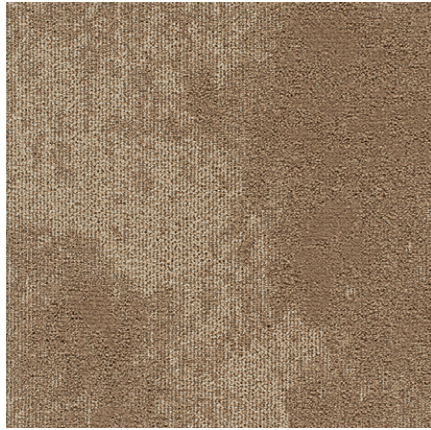
WHALE SONG, BELUGA
BEL121-176 KRILL



SURFACE STUDY, WASHED
WAS121-176 GILT



JOURNAL, LINE BY LINE
LNB208-20 WRITE ON WITH
HONEY AND WINE ACCENTS



WHALE SONG, HUMPBACK
HUM121-176 KRILL



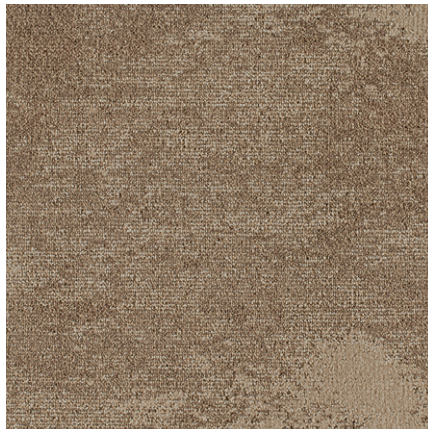
SURFACE STUDY, BURNED
BUR121-176 GILT



JOURNAL, INSCRIPTION
INS208-20 WRITE ON WITH
HONEY AND WINE ACCENTS



WHALE SONG, ORCA
ORC121-176 KRILL



SURFACE STUDY, DISTRESSED
DIS121-176 GILT



JOURNAL, FREEHAND
FRE208-20 WRITE ON WITH
HONEY AND WINE ACCENTS



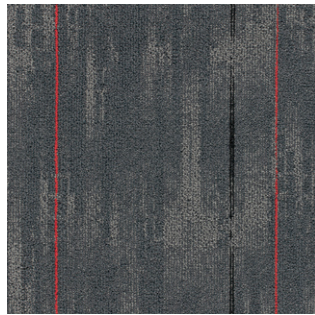
Journal, Freehand in Write On with Honey and Wine accents. Ashlar tile installation.



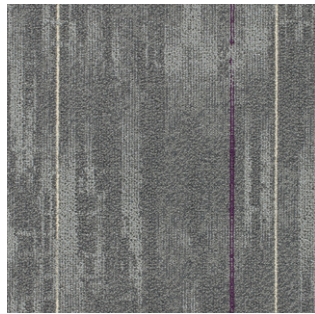
Style for every space.

Our diverse collection of patterns range from linear, to geometric, to organic, to solids.

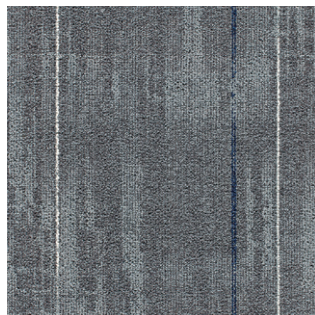
Curated from seven of Milliken's top collections, Quick Ship offers an exciting selection of styles and patterns. Whether your aesthetic is simple and clean, or intricate and ornate, we have a design that's right for you.



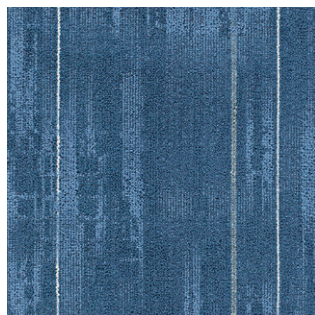
JOURNAL
FREEHAND
FRE154 QUILL WITH PUNCH
AND CARBON ACCENTS



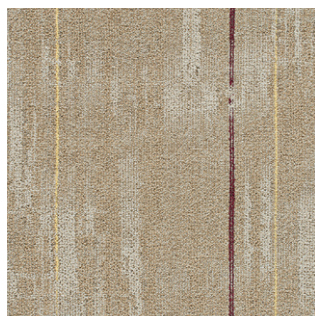
JOURNAL
FREEHAND
FRE173-152 MANUSCRIPT
WITH CHAMOMILE AND
PLUM ACCENTS



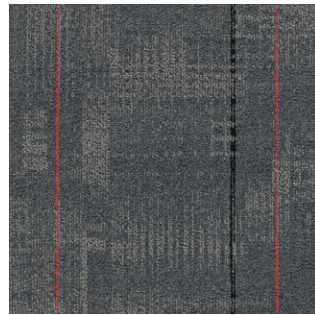
JOURNAL
FREEHAND
FRE19-106 COMPOSE
WITH QUARTZ AND
NAVY ACCENTS



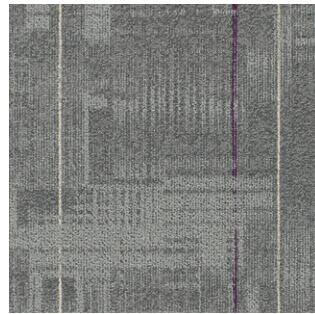
JOURNAL
FREEHAND
FRE157 SCROLL WITH LEAD
AND GRAPHITE ACCENTS



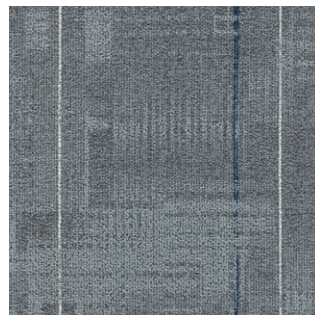
JOURNAL
FREEHAND
FRE208-20 WRITE ON WITH
HONEY AND WINE ACCENTS



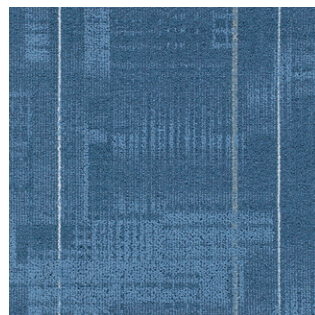
JOURNAL
INSCRIPTION
INS154 QUILL WITH PUNCH
AND CARBON ACCENTS



JOURNAL
INSCRIPTION
INS173-152 MANUSCRIPT
WITH CHAMOMILE AND
PLUM ACCENTS



JOURNAL
INSCRIPTION
INS19-106 COMPOSE
WITH QUARTZ AND
NAVY ACCENTS



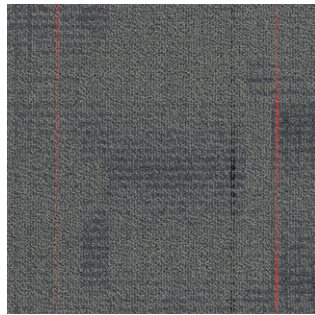
JOURNAL
INSCRIPTION
INS157 SCROLL WITH LEAD
AND GRAPHITE ACCENTS



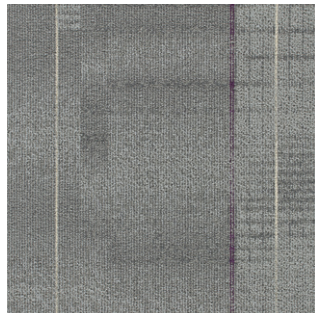
JOURNAL
INSCRIPTION
INS208-20 WRITE ON WITH
HONEY AND WINE ACCENTS



Journal, Inscription in Scroll with Lead and Graphite accents. Vertical ashlar tile installation.



JOURNAL
LINE BY LINE
LNB154 QUILL WITH PUNCH
AND CARBON ACCENTS



JOURNAL
LINE BY LINE
LNB173-152 MANUSCRIPT
WITH CHAMOMILE AND
PLUM ACCENTS



JOURNAL
LINE BY LINE
LNB19-106 COMPOSE WITH
QUARTZ AND NAVY ACCENTS



JOURNAL
LINE BY LINE
LNB157 SCROLL WITH LEAD
AND GRAPHITE ACCENTS



JOURNAL
LINE BY LINE
LNB208-20 WRITE ON WITH
HONEY AND WINE ACCENTS



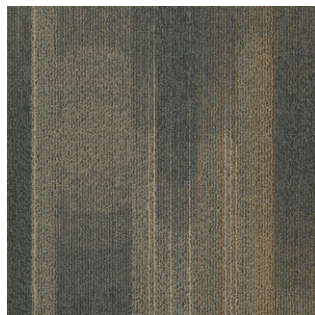
Journal, Line By Line in Compose with Quartz and Navy accents. Ashlar tile installation.



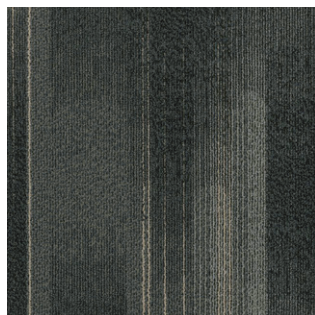
SOUTHERN ANALOG
PANORAMIC
PA109 DIFFUSE



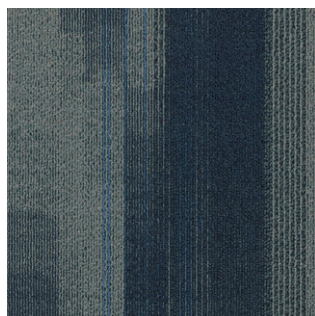
SOUTHERN ANALOG
PANORAMIC
PA103 MIXER



SOUTHERN ANALOG
PANORAMIC
PA115 TILT



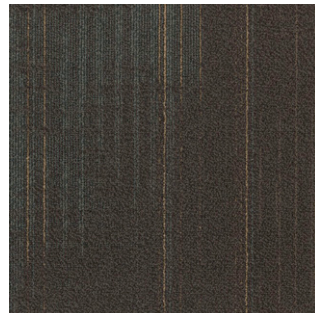
SOUTHERN ANALOG
PANORAMIC
PA117 VIGNETTE



SOUTHERN ANALOG
PANORAMIC
PA118 ZOOM



SOUTHERN ANALOG
VIEWFINDER
VF209 DIFFUSE



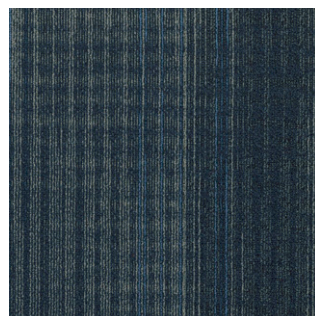
SOUTHERN ANALOG
VIEWFINDER
VF203 MIXER



SOUTHERN ANALOG
VIEWFINDER
VF215 TILT



SOUTHERN ANALOG
VIEWFINDER
VF217 VIGNETTE



SOUTHERN ANALOG
VIEWFINDER
VF218 ZOOM



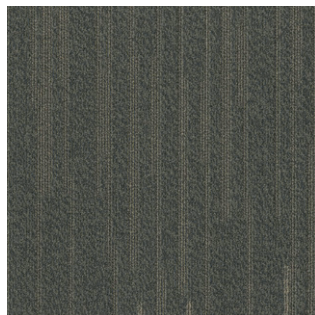
Southern Analog, Panoramic in Tilt. Ashlar tile installation.



SOUTHERN ANALOG
VOLTAGE
VT309 DIFFUSE



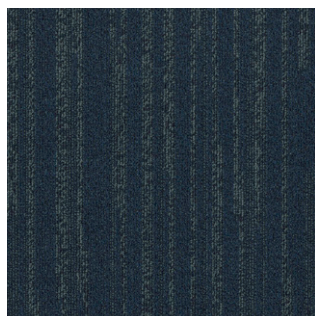
SOUTHERN ANALOG
VOLTAGE
VT303 MIXER



SOUTHERN ANALOG
VOLTAGE
VT315 TILT



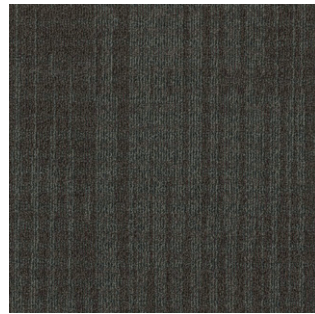
SOUTHERN ANALOG
VOLTAGE
VT317 VIGNETTE



SOUTHERN ANALOG
VOLTAGE
VT318 ZOOM



SOUTHERN ANALOG
PINHOLE
PH409 DIFFUSE



SOUTHERN ANALOG
PINHOLE
PH403 MIXER



SOUTHERN ANALOG
PINHOLE
PH415 TILT



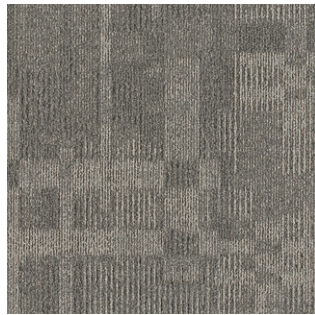
SOUTHERN ANALOG
PINHOLE
PH417 VIGNETTE



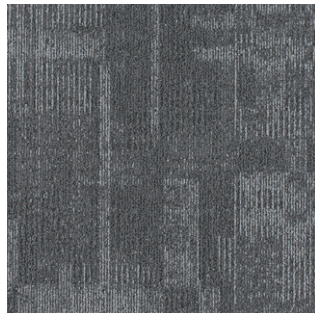
SOUTHERN ANALOG
PINHOLE
PH418 ZOOM



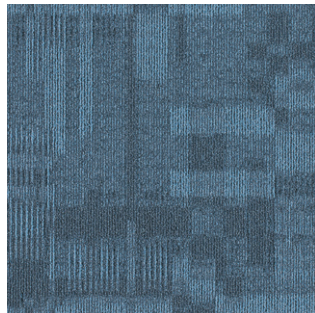
Southern Analog, Voltage and Pinhole in Zoom. Monolithic tile installation.



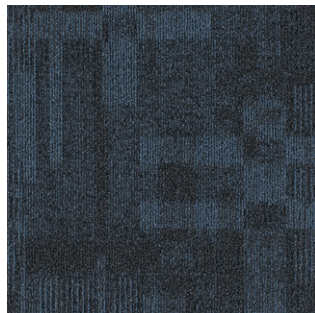
GHOST ARTIST
FACADE
FAC122-120 CLOAK



GHOST ARTIST
FACADE
FAC13-118 OBSCURA



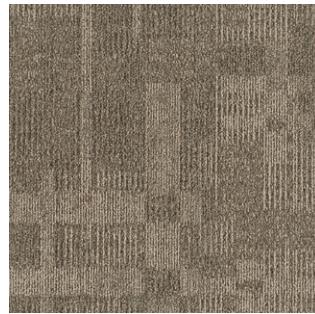
GHOST ARTIST
FACADE
FAC52-126 ENSCONCE



GHOST ARTIST
FACADE
FAC27-52 STEALTH



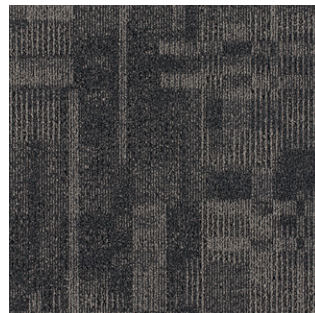
GHOST ARTIST
FACADE
FAC15-124 VISAGE



GHOST ARTIST
FACADE
FAC124-94 CACHE



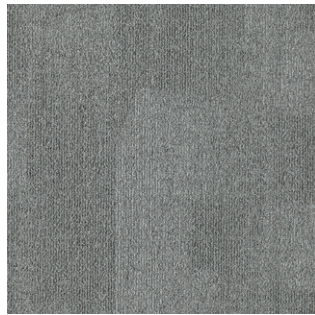
GHOST ARTIST
FACADE
FAC94-96 UMBRA



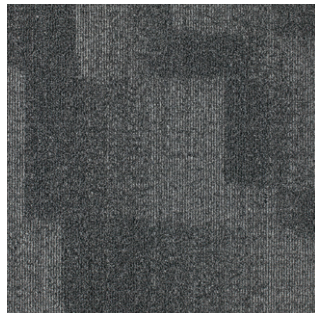
GHOST ARTIST
FACADE
FAC133-120 CONCEAL



Ghost Artist, Facade in Ensconce. Vertical ashlar tile installation.



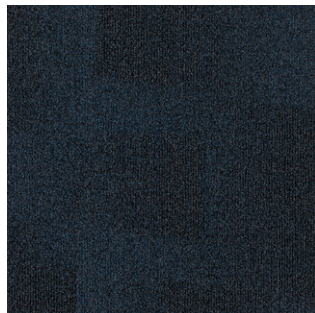
NORDIC STORIES
HIDDEN PLAINS
HDP108-13 FJORD



NORDIC STORIES
HIDDEN PLAINS
HDP13-119 ESKER



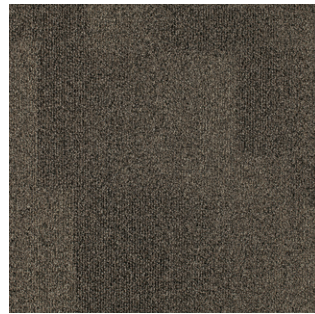
NORDIC STORIES
HIDDEN PLAINS
HDP119-27 ASH BLANKET



NORDIC STORIES
HIDDEN PLAINS
HDP27-52 ROCK POWDER



NORDIC STORIES
HIDDEN PLAINS
HDP124-94 SANDPIPER



NORDIC STORIES
HIDDEN PLAINS
HDP94-59 NORSE



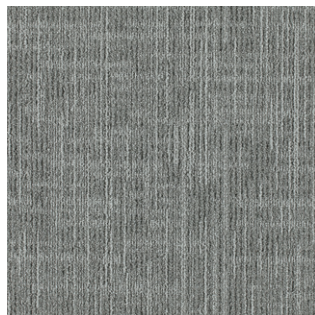
NORDIC STORIES
HIDDEN PLAINS
HDP67-59 LAHAR



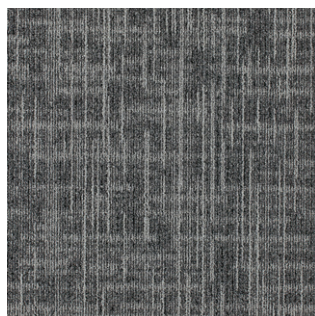
NORDIC STORIES
HIDDEN PLAINS
HDP122-120 SPIRITLAND



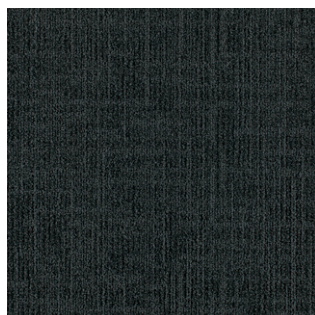
Nordic Stories, Hidden Plains in Spiritland. Monolithic tile installation.



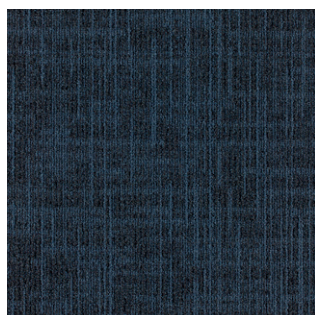
NORDIC STORIES
TECTONIC
TTC108-13 FJORD



NORDIC STORIES
TECTONIC
TTC13-119 ESKER



NORDIC STORIES
TECTONIC
TTC119-27 ASH BLANKET



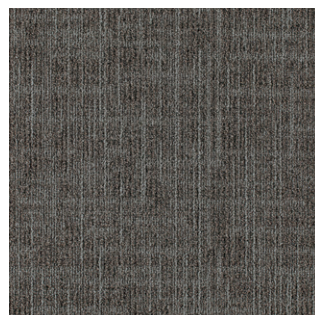
NORDIC STORIES
TECTONIC
TTC27-52 ROCK POWDER



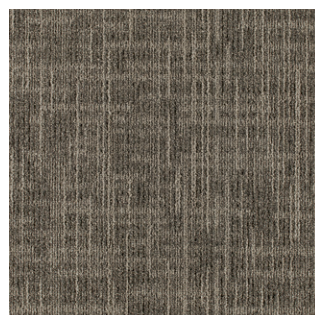
NORDIC STORIES
TECTONIC
TTC124-94 SANDPIPER



NORDIC STORIES
TECTONIC
TTC94-59 NORSE



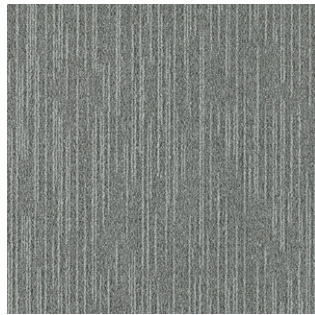
NORDIC STORIES
TECTONIC
TTC67-59 LAHAR



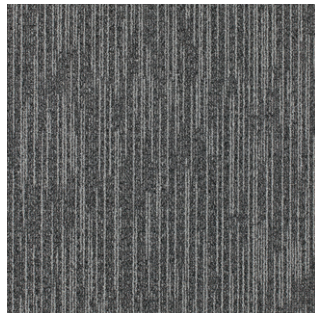
NORDIC STORIES
TECTONIC
TTC122-120 SPIRITLAND



Nordic Stories, Tectonic in Lahar. Monolithic tile installation.



NORDIC STORIES
ISOGRAD
IGD108-13 FJORD



NORDIC STORIES
ISOGRAD
IGD13-119 ESKER



NORDIC STORIES
ISOGRAD
IGD119-27 ASH BLANKET



NORDIC STORIES
ISOGRAD
IGD27-52 ROCK POWDER



NORDIC STORIES
ISOGRAD
IGD124-94 SANDPIPER



NORDIC STORIES
ISOGRAD
IGD94-59 NORSE



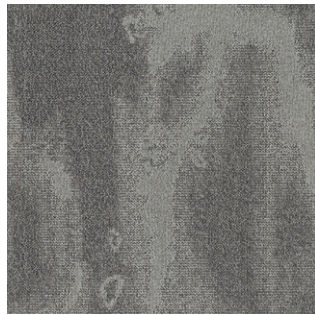
NORDIC STORIES
ISOGRAD
IGD67-59 LAHAR



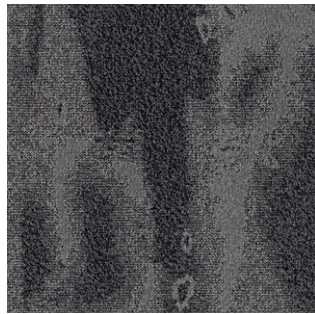
NORDIC STORIES
ISOGRAD
IGD122-120 SPIRITLAND



(top to bottom) Nordic Stories, Tectonic in Ash Blanket, Formwork in Gable and Nordic Stories, Isograd in Esker.
Monolithic tile installation.



SURFACE STUDY
BURNED
BUR173-152 QUARTZ



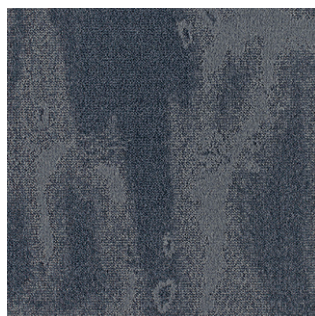
SURFACE STUDY
BURNED
BUR119-174 CHARRED



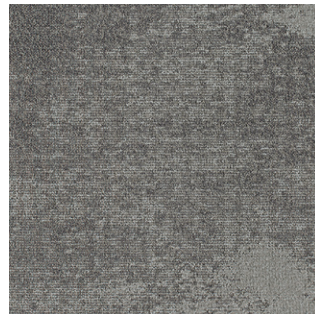
SURFACE STUDY
BURNED
BUR154-133 TAR



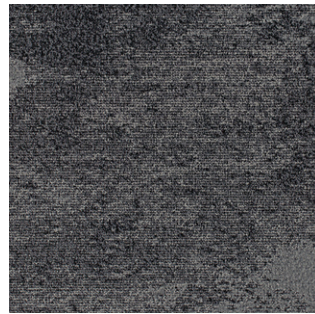
SURFACE STUDY
BURNED
BUR121-176 GILT



SURFACE STUDY
BURNED
BUR106 EDDY



SURFACE STUDY
DISTRESSED
DIS173-152 QUARTZ



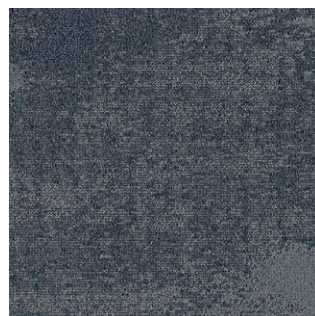
SURFACE STUDY
DISTRESSED
DIS119-174 CHARRED



SURFACE STUDY
DISTRESSED
DIS154-133 TAR



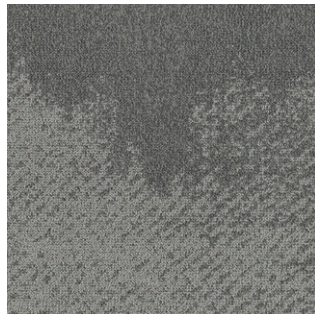
SURFACE STUDY
DISTRESSED
DIS121-176 GILT



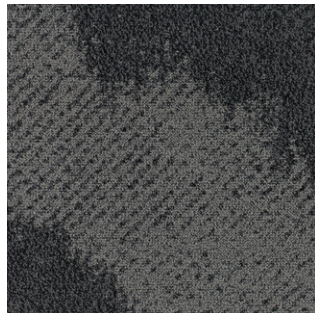
SURFACE STUDY
DISTRESSED
DIS106 EDDY



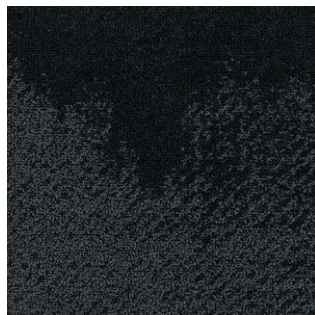
Surface Study, Burned in Tar. Vertical ashlar tile installation.



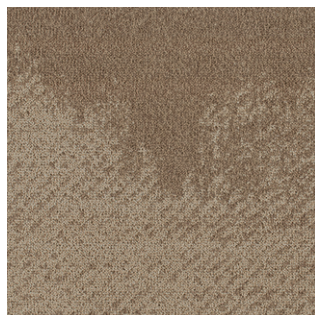
SURFACE STUDY
WASHED
WAS173-152 QUARTZ



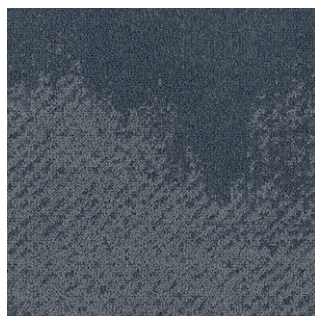
SURFACE STUDY
WASHED
WAS119-174 CHARRED



SURFACE STUDY
WASHED
WAS154-133 TAR



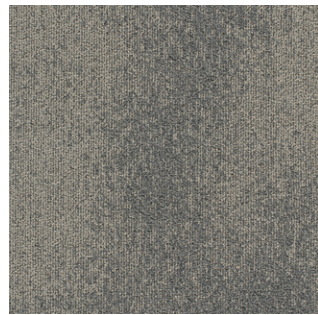
SURFACE STUDY
WASHED
WAS121-176 GILT



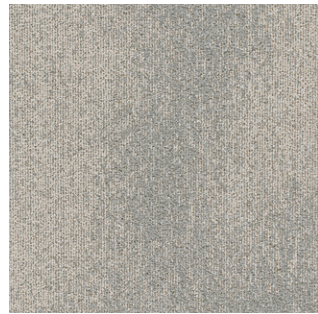
SURFACE STUDY
WASHED
WAS106 EDDY



Surface Study, Washed in Gilt. Vertical ashlar tile installation.



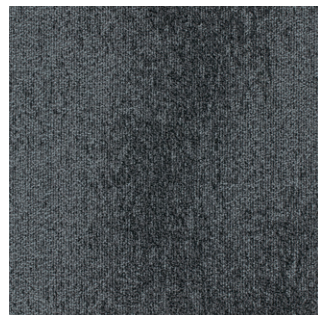
WHALE SONG
BELUGA
BEL173-174 BARNACLE



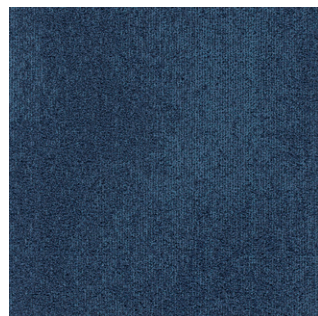
WHALE SONG
BELUGA
BEL108-204 BRINY



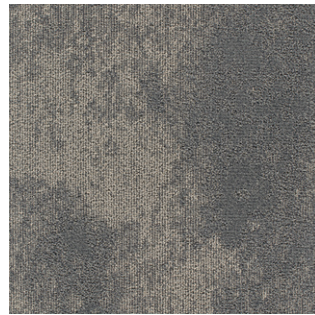
WHALE SONG
BELUGA
BEL121-176 KRILL



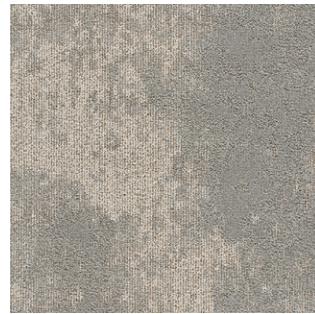
WHALE SONG
BELUGA
BEL119-106 MARITIME



WHALE SONG
BELUGA
BEL19 COASTLINE



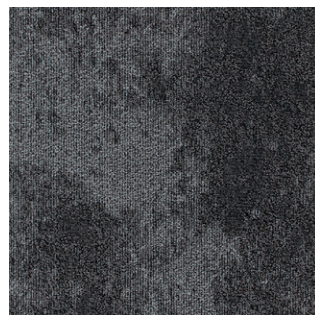
WHALE SONG
HUMPBAC
HUM173-174 BARNACLE



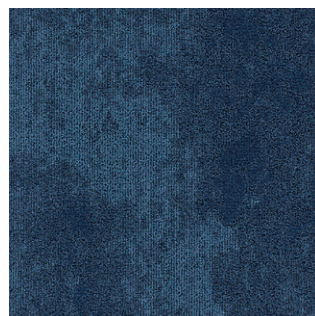
WHALE SONG
HUMPBAC
HUM108-204 BRINY



WHALE SONG
HUMPBAC
HUM121-176 KRILL



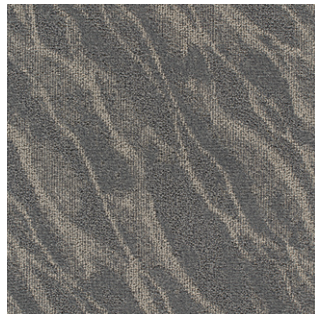
WHALE SONG
HUMPBAC
HUM119-106 MARITIME



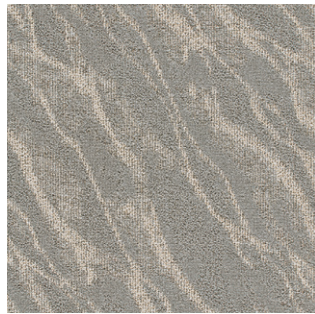
WHALE SONG
HUMPBAC
HUM19 COASTLINE



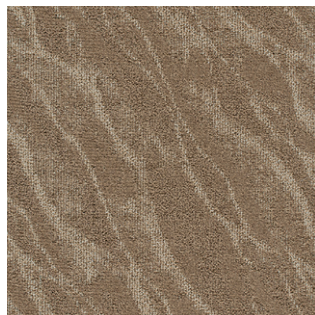
Whale Song, Beluga in Briny. Vertical ashlar tile installation.



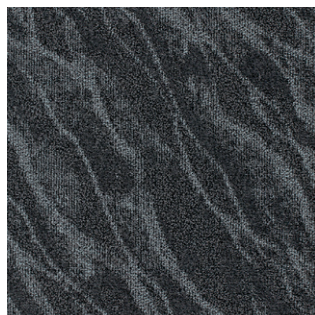
WHALE SONG
NARWHAL
NRW173-174 BARNACLE



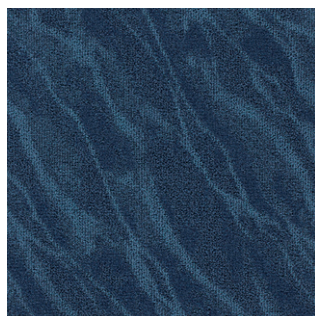
WHALE SONG
NARWHAL
NRW108-204 BRINY



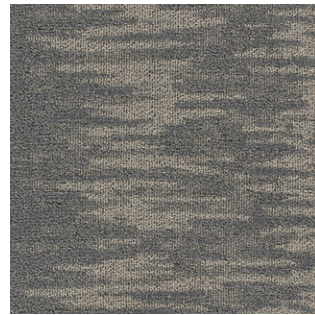
WHALE SONG
NARWHAL
NRW121-176 KRILL



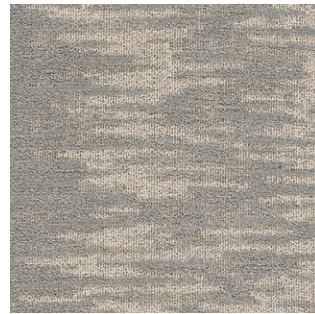
WHALE SONG
NARWHAL
NRW119-106 MARITIME



WHALE SONG
NARWHAL
NRW19 COASTLINE



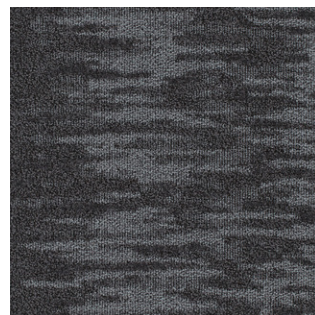
WHALE SONG
ORCA
ORC173-174 BARNACLE



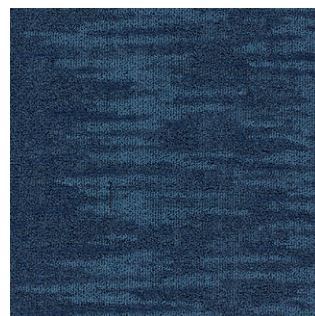
WHALE SONG
ORCA
ORC108-204 BRINY



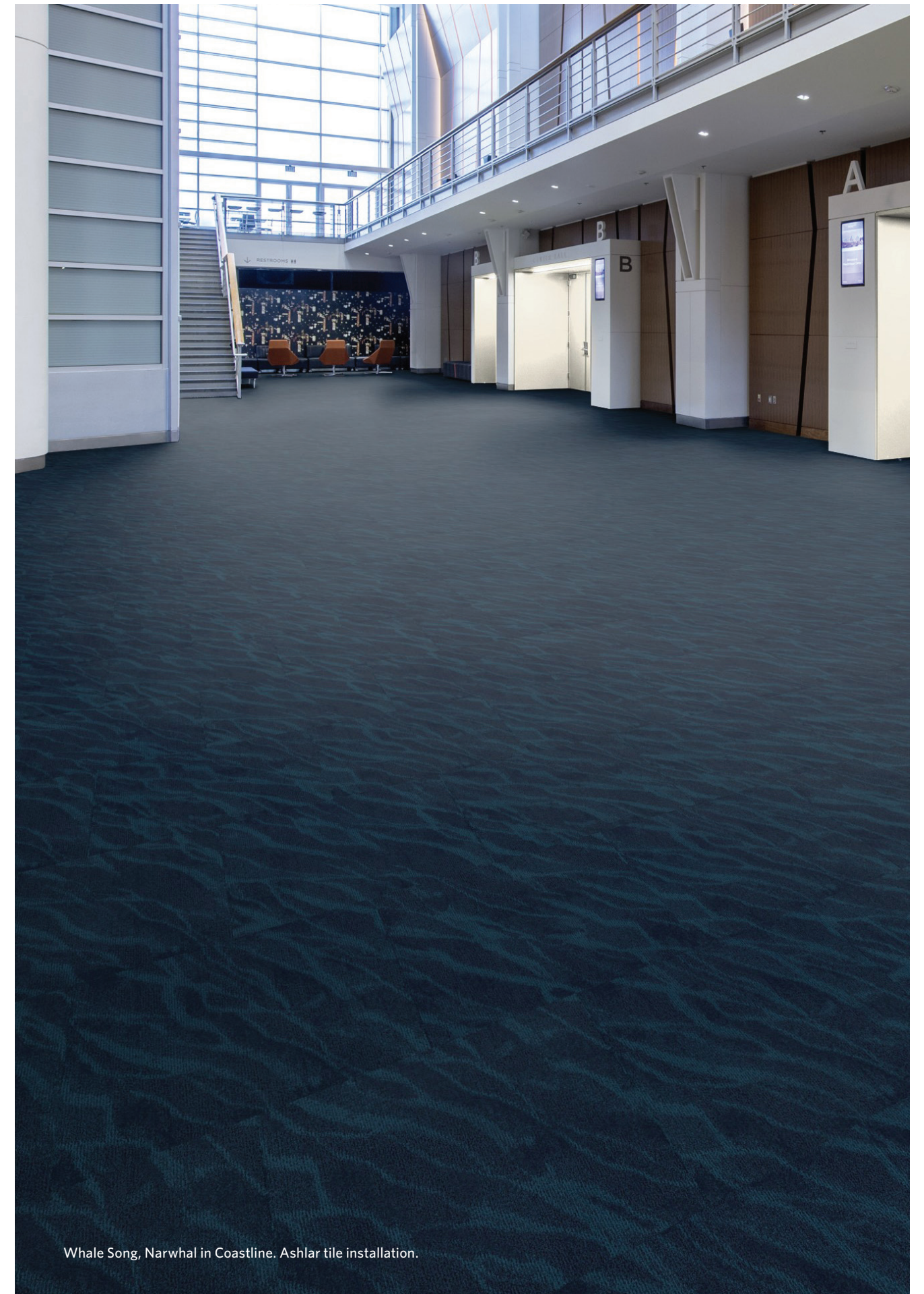
WHALE SONG
ORCA
ORC121-176 KRILL



WHALE SONG
ORCA
ORC119-106 MARITIME



WHALE SONG
ORCA
ORC19 COASTLINE



Whale Song, Narwhal in Coastline. Ashlar tile installation.



FORMWORK
FWK13 PILLAR



FORMWORK
FWK67 TRUSS



FORMWORK
FWK79 SPAR



FORMWORK
FWK118 PLINTH



FORMWORK
FWK27 PITCH



FORMWORK
FWK122 PIER



FORMWORK
FWK120 FOUNDATION



FORMWORK
FWK94 WAINSCOT



FORMWORK
FWK59 RENDER



FORMWORK
FWK133 VAULT



Formwork in Render, Monolithic tile on platform, broadloom on stairs. Lapidus, Mantle in Moonstone, Monolithic tile installation.

Fast delivery

Your favorite products delivered quickly.

With Quick Ship, you get the items you need on time, every time. You'll never have to worry about delivery delays or extended lead times again.



Affordable price points

Trusted quality and style offered at an attractive price.

Quick Ship makes it possible to purchase beautiful products at an affordable price. All with the quality and style you expect.



Lifetime warranty

A guarantee you can trust.

Shopping Quick Ship promises reliable customer support and eliminates worry.



Ghost Artist, Facade in Conceal. Ashlar tile installation.

122 unique SKU's

Find the style that's right for you.

With an extensive variety of colors and patterns, available in tile and broadloom, Quick Ship offers the right style for every room design.

Visualize now at [MillikenFloors.com](https://www.millikenfloors.com).



Southern Analog, Pinhole in Diffuse. Ashlar tile installation.

Style Backed by Performance

Milliken Floor Covering offers products and expertise in all areas of your commercial spaces, including modular and broadloom carpet and milliCare.®

Simplify your flooring projects by working with a trusted partner that lets you focus on enjoying the process of creating a great space.



MILLCARE®

milliCare takes caring for your flooring and textiles off your to-do list, which means you can skip right to the part where you get to lean back, put your hands behind your head, and be a hero for keeping a beautifully cleaned space.



CUSHION BACKING

Provides superior underfoot comfort while improving the carpet's durability and offering ergonomic, acoustic and environmental benefits.
» millikenfloors.com/cushion



STAINSMART®

StainSmart provides lifetime resistance for your carpet against penetrating stains and soil.
» millikenfloors.com/stainSMART



WARRANTIES

Our products are backed by lifetime commercial warranties that ensure quality and give peace of mind. Milliken stands behind its products in the areas of Face Fiber Wear, Staining/Soiling Resistance, Color Pattern Permanency, Delamination of Backing, Edge Ravel, Tuft Bind, Floor Compatibility, Antistatic, Flammability, Cushion Resiliency, Dimensional Stability, Floor Release, TractionBack and Moisture Resistance.
» millikenfloors.com/warranty



MOISTURE MANAGEMENT

Milliken modular carpet is a moisture mitigation solution all by itself. Unlike with hardback products, water vapor has a way to escape from beneath Milliken's cushion backing. It travels freely through our open-cell cushion, evaporating naturally through seams at the edges of each carpet tile. All modular carpet tiles come with a lifetime warranty against adhesive breakdown due to moisture vapor emissions.
» millikenfloors.com/moisture



SUSTAINABILITY

Core to our culture, we embrace sustainability with practices such as third party voluntary product labeling and certifications, zero waste to landfill since 1992, use of renewable energy, product lifecycle assessments, ISO 9000 quality standards and all of our manufacturing sites are certified to the highest global environmental standard - ISO 14001 certified.
» millikenfloors.com/sustainability





SIT TO STAND

Avoid the hassle and expense of using anti-fatigue mats under sit-to-stand workstations. Milliken cushion backed carpet tiles have ergonomics built directly into the carpet tiles themselves.
» millikenfloors.com/sit2stand



FORMWORK // Formwork

Construction Tufted, Level Loop	Tufted Face Weight 18 oz/yd ² (610.3 g/m ²)	Standard Backing <i>Tile:</i> PVC-Free Underscore® ES Cushion Underscore® is available with TractionBack® <i>Broadloom:</i> PVC-Free Endura-Loc™
Sizes <i>Tile:</i> 50 cm x 50 cm (19.7" x 19.7") <i>Broadloom:</i> 13' 6" wide	Finished Pile Height 0.15" (3.81 mm)	TARR <i>Tile:</i> Severe <i>Broadloom:</i> Heavy
Yarn Type Universal® Fibers Solution-Dyed Nylon Type 6,6	Finished Pile Thickness 0.10" (2.54 mm)	 
Stain Resist / Soil Release StainSmart®	Average Density 6,300	Recommended Installation Method MONOLITHIC





GHOST ARTIST // Facade

Construction Tufted, Textured Loop	Tufted Face Weight 21 oz/yd ² (712 g/m ²)	Standard Backing PVC-Free Underscore® ES Cushion Underscore® is available with TractionBack®
Tile Size 50 cm x 50 cm (19.7" x 19.7")	Finished Pile Height 0.16" (4.06 mm)	TARR Severe
Yarn Type Universal® Fibers Solution-Dyed Nylon Type 6,6	Finished Pile Thickness 0.10" (2.54 mm)	Recommended Installation Method  
Stain Resist / Soil Release StainSmart®	Average Density 8,136	MONOLITHIC







JOURNAL // Freehand, Inscription, Line By Line

Construction Tufted, Textured Loop	Tufted Face Weight 15.5 oz/yd ² (526 g/m ²)	Standard Backing PVC-Free Underscore® ES Cushion Underscore® is available with TractionBack®
Tile Size 50 cm x 50 cm (19.7" x 19.7")	Finished Pile Height 0.156" (3.96 mm)	TARR Heavy
Yarn Type ECONYL® Solution-Dyed Nylon Type 6	Finished Pile Thickness 0.094" (2.39 mm)	Recommended Installation Method  
Stain Resist / Soil Release StainSmart®	Average Density <i>Freehand, Inscription:</i> 5,821 <i>Line By Line:</i> 6,403	ASHLAR





NORDIC STORIES // Hidden Plains, Isograd, Tectonic

Construction Tufted, Textured Loop	Tufted Face Weight <i>Hidden Plains:</i> 18.9 oz/yd ² (641 g/m ²) <i>Isograd:</i> 16.7 oz/yd ² (566 g/m ²) <i>Tectonic:</i> 18.9 oz/yd ² (641 g/m ²)	Standard Backing PVC-Free Underscore® ES Cushion Underscore® is available with TractionBack®
Tile Size 50 cm x 50 cm (19.7" x 19.7")	Finished Pile Height <i>Hidden Plains:</i> 0.13" (3.30 mm) <i>Isograd:</i> 0.13" (3.30 mm) <i>Tectonic:</i> 0.14" (3.56 mm)	TARR Severe
Yarn Type Universal® Fibers Solution-Dyed Nylon Type 6,6	Finished Pile Thickness <i>Hidden Plains:</i> 0.107" (2.72 mm) <i>Isograd:</i> 0.139" (3.53 mm) <i>Tectonic:</i> 0.110" (2.79 mm)	Recommended Installation Methods    
Stain Resist / Soil Release StainSmart®	Average Density <i>Hidden Plains:</i> 6,807 <i>Isograd:</i> 5,504 <i>Tectonic:</i> 6,504	MONOLITHIC V. ASHLAR

SOUTHERN ANALOG // Panoramic, Pinhole, Viewfinder, Voltage

Construction Tufted, Textured Loop	Tufted Face Weight 15 oz/yd ² (509 g/m ²)	Standard Backing PVC-Free Underscore® ES Cushion Underscore® is available with TractionBack®
Tile Size 50 cm x 50 cm (19.7" x 19.7")	Finished Pile Height 0.13" (3.30 mm)	TARR Heavy
Yarn Type ECONYL® Solution-Dyed Nylon Type 6	Average Density <i>Panoramic:</i> 5,951 <i>Pinhole:</i> 9,300 <i>Viewfinder:</i> 5,843 <i>Voltage:</i> 7,914	Recommended Installation Methods      
Stain Resist / Soil Release StainSmart®		MONOLITHIC ASHLAR QUARTER-TURN

SURFACE STUDY // Burned, Distressed, Washed

Construction <i>Washed:</i> Tufted, Textured Loop <i>Burned & Distressed:</i> Tufted, Textured Loop, Tip Shear	Tufted Face Weight <i>Burned:</i> 15.2 oz/yd ² (515 g/m ²) <i>Distressed:</i> 15.9 oz/yd ² (539 g/m ²) <i>Washed:</i> 15.3 oz/yd ² (519 g/m ²)	Standard Backing PVC-Free Underscore® ES Cushion Underscore® is available with TractionBack®
Tile Size 50 cm x 50 cm (19.7" x 19.7")	Finished Pile Height <i>Burned:</i> 0.138" (3.51 mm) <i>Distressed:</i> 0.136" (3.45 mm) <i>Washed:</i> 0.135" (3.43 mm)	TARR Heavy
Yarn Type ECONYL® Solution-Dyed Nylon Type 6	Finished Pile Thickness <i>Burned:</i> 0.092" (2.34 mm) <i>Distressed:</i> 0.086" (2.18 mm) <i>Washed:</i> 0.077" (1.96 mm)	Recommended Installation Methods    
Stain Resist / Soil Release StainSmart®	Average Density <i>Burned:</i> 5,400 <i>Distressed:</i> 5,735 <i>Washed:</i> 6,545	ASHLAR V. ASHLAR

WHALE SONG // Beluga, Humpback, Narwhal, Orca

Construction Tufted, Textured Loop, Tip Shear	Tufted Face Weight 17.5 oz/yd ² (593 g/m ²)	Standard Backing PVC-Free Underscore® ES Cushion Underscore® is available with TractionBack®
Tile Size 50 cm x 50 cm (19.7" x 19.7")	Finished Pile Height <i>Beluga:</i> 0.14" (3.56 mm) <i>Humpback:</i> 0.15" (3.81 mm) <i>Narwhal:</i> 0.15" (3.81 mm) <i>Orca:</i> 0.15" (3.81 mm)	TARR Heavy
Yarn Type ECONYL® Solution-Dyed Nylon Type 6	Finished Pile Thickness <i>Beluga:</i> 0.107" (2.72 mm) <i>Humpback:</i> 0.139" (3.53 mm) <i>Narwhal:</i> 0.139" (3.53 mm) <i>Orca:</i> 0.110" (2.79 mm)	Recommended Installation Methods    
Stain Resist / Soil Release StainSmart®	Average Density <i>Beluga:</i> 5,618 <i>Humpback:</i> 4,299 <i>Narwhal:</i> 4,196 <i>Orca:</i> 5,498	ASHLAR V. ASHLAR

QUICK SHIP



Whale Song, Humpback in Briny.
Monolithic tile installation.



Surface Study, Washed in Gilt.
Vertical ashlar tile installation.

WHY CHOOSE OUR QUICK SHIP PROGRAM?

- 3 day lead time
- Affordable price points
- Lifetime warranties
- 122 unique SKU's

SUSTAINABLE PROPERTIES OF THIS PRODUCT

The modular collections in the Quick Ship program are manufactured with Underscore® ES (Environmentally Sustainable) cushion backing and is certified NSF-140 Gold with over 40% pre-consumer recycled content by total product weight. With our optional Underscore® ESP backing, Quick Ship carries an NSF-140 Platinum certification.

All Milliken modular carpet's carry Environmental Product Declarations and Health Product Declarations, which contribute to LEED certification. Additionally, Milliken modular carpets carry Declare® transparency labels and comply with the Red List Imperative of the Living Building Challenge.™



Journal, Inscription in Scroll with Lead and Graphite accents.
Vertical ashlar tile installation.



Growing greener for over 100 years.

This product has a UL® Environment 3rd party verified Environmental Product Declaration (EPD).
A copy of the EPD is available online at millikencarpet.com/epd and productguide.ulenvironment.com.

This cushion-back carpet tile product is covered by one or more patents, published applications and/or patents pending. Specifications are subject to normal manufacturing tolerances and may be changed without prior notice. Images in this brochure are approximate for color and pattern scale. Please use actual carpet samples to make your final selections.