

## OBEX™ Grid Installation and Maintenance

### Overview

OBEX™ Grids (Vinyl, Mono, and CutX) are available in two variations (Open or Closed) and one thicknesses. The 11 mm thickness is ideal for recessed areas from 10-12 mm depth, or surface mount installations. Grids in 11 mm thickness can also be installed alongside many other floor covering products of similar thickness without a nosing or transition.

All Grid products can be surface mount with an adaptable edging system - PVC connector edging or aluminum ramped profile, see edging section for details.

All Grids have a heel proof construction to prevent heels from being trapped and are designed to comply with requirements contained in ADA and BS 8300: 2001 and ADA.

Grids are pre-assembled in units of 6 and are easy to disconnect by hand to get individual pieces.

### **Intense traffic conditions above 3,000 people per day**

In case of intense traffic above 3,000 people per day, it is recommended that grids in 11 mm closed construction are bonded to the subfloor with a permanent adhesive, please see adhesive section for glue recommendations.

### Heavy wheeled traffic

All OBEX grids are designed to accommodate high levels of foot and wheel traffic, commonly experienced in locations such as shopping centers and airports.

In cases where heavy wheeled traffic operates, more than (220 lbs. or 100 kg) per load point, we recommend installing the 11mm product with a full spread of adhesive. Gluing the product to the subfloor will allow it to cope with heavy wheeled traffic.

### **Temperature considerations**

During installation, it is recommended that the grids are normalized to a temperature between 59°F to 77°F (15°C to 25°C) before installation. This ensures accurate sizing for the install and proper function of the connectors.

After installation, the grid area may expand or contract slightly when the product is exposed to extremes of temperature. The larger the installation, the larger the overall dimensional change, and it is advisable to split up larger installations with T-bar accessories.

The OBEX Grid products have been tested to assess the level of expansion and contraction due to temperature variation. Expected dimensional change result from normal of less than 1%.

To allow for this movement, it is important to leave a small gap around the edges of the install (+/- 1/8 inch or 3 mm). This can be either filled with a flexible sealant or hidden under the edging/skirting.

# OBEX™ | Milliken® Entrance Flooring

## Product

OBEX Grids come in distinct products (Vinyl, Mono, and CutX) and two variations (11mm Open and Closed). Typically, the Closed versions are used recessed indoors, the open versions are used in exterior surface applications or indoors in a recess with a drain. All product come packed 30 pieces per box and connections are simple 'hammer together' design.



**OBEX Grid Vinyl**



**OBEX Grid Mono**



**OBEX Grid CutX**

## Recess / Subfloor Preparation

# OBEX™ | Milliken® Entrance Flooring



Ensure the subfloor is level and clear of any loose material.



Repair any large area of damage.

If necessary, screed up the recessed area when the depth is more than 11mm.



Following reparations, make sure the area is clean and clear of debris.



Use a levelling compound or latex-based product to ensure a good surface for the installation.

Additionally, a tackifier or adhesive can be applied at this point for installations subject to heavy or wheeled traffic.

# OBEX™ | Milliken™ Entrance Flooring

## Tools require for Installation



- Cut resistant gloves
- Hammer or mallet
- Carpet knife
- Measuring tape
- Steel ruler or straight-edge

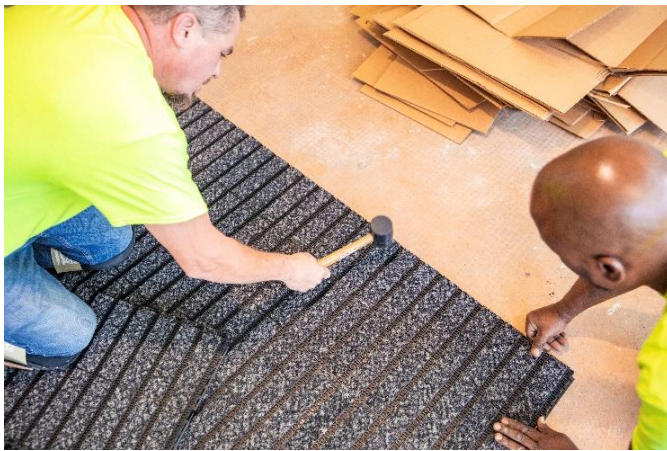
# OBEX™ | Milliken™ Entrance Flooring

## Installation of OBEX Grids



Measure the area and mark a center line to show where the product should be laid first.

Make sure there is enough product from the same batch. It is important to not mix batches, there might be color variation.

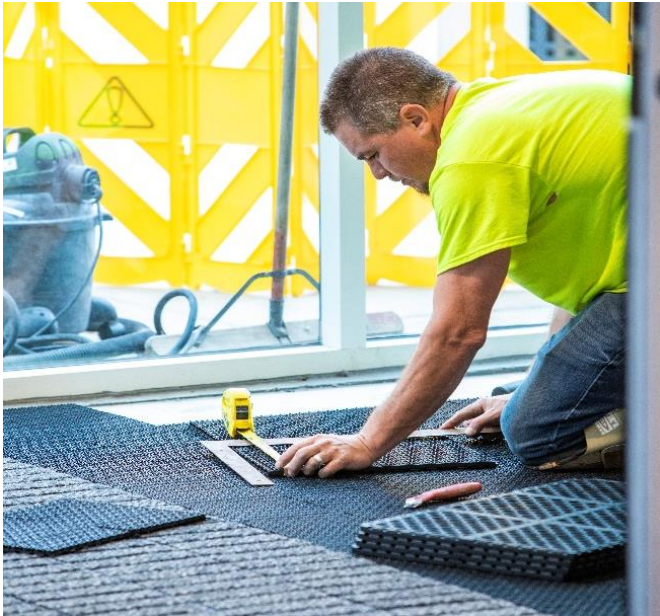


The tiles connect to one another easily, with the use of hammer or mallet enabling quick installation.



The edges of the installation should be the last to be installed.

# OBEX™ | Milliken® Entrance Flooring



The OBEX Grids are designed to be cut with a sharp knife. Mark the required measurement point using tape and knife.



Line up the straight edge with the mark and make the cut. For the outer part of the install, use the edge of the recess to align the straight edge.



Note - connecting pins should be removed if the install finishes with a full tile, to give a clean finish to the edge.

# OBEX™ | Milliken® Entrance Flooring



Make sure the installation has room to allow for expansion and contraction to ensure the tiles are flat and level.

Depending on the ambient conditions, it might be necessary to leave a small gap (1/16" or 1/8") where the installation meets a wall or recess edge.



Accessories such as T bars are also available to help divide an install, whether for separating product types or to allow for expansion and contraction in large installs.

Speak to your sales representative for details.

## Curved or Odd-Shaped Installations

Assess whether the product previously installed (if available) can be used as a template. If not, use stiff cardboard or material to make a template of the area.

For areas such as revolving doors, if a template cannot be made, measure the exact diameter of the recess and then transfer this measurement on to pre-assembled grids to make the cut. Alternatively, the same method as used for a 'normal' recess can be used, placing a sheet in the marked center and working out from there to the edges, where a manual cut aligned with the edge can be made.

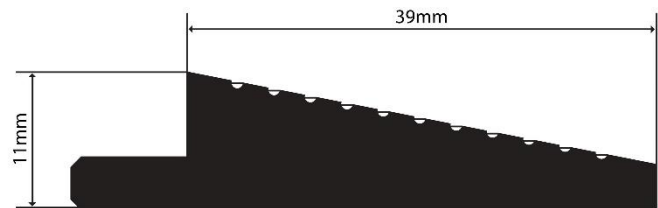
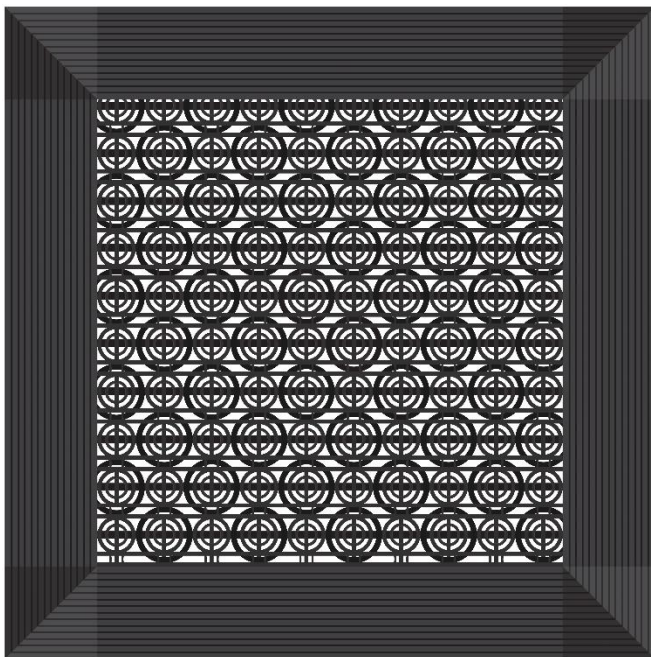
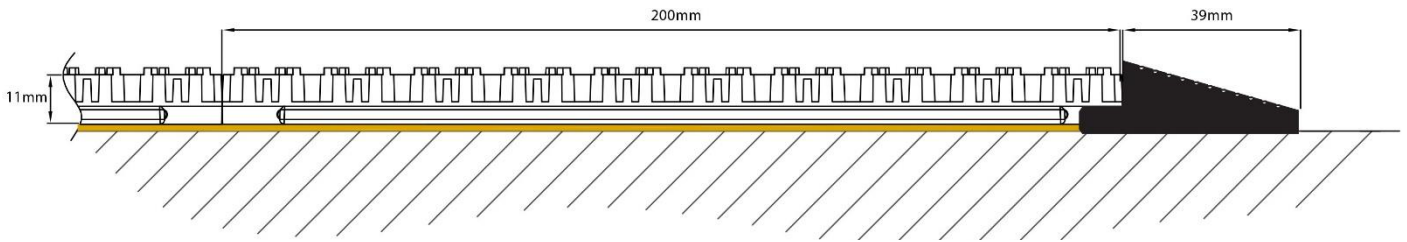
General note - avoid leaving the connectors showing at the edges of the recess. These should be cut off to leave a clean finish. Ensure subfloor is level, sound and free of contaminants such as grease. If greasy, clean with degreaser and prime using neoprene primer. Use levelling compounds or latex if necessary. It may also be necessary to screed up recess to achieve the desired depth.





## Accessories

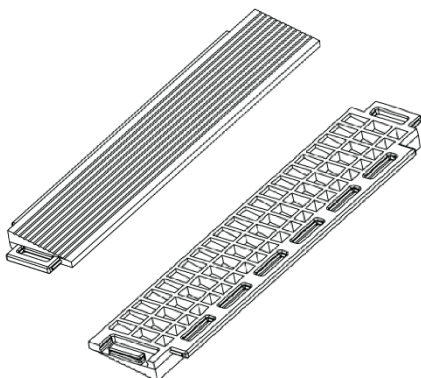
### Edging systems - OBEX™ Vinyl Edge Kit



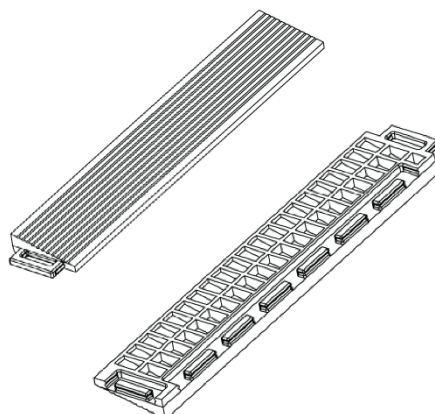
- Offered in 11mm thickness only
- Suitable for open and closed constructions
- Sized to suite grid dimensions
- Hammer together design, using same connectors as the OBEX Grid
- Glue bottom of edge connectors to grids with Gorilla PVC Prima Clear Primer and Cement for PVC use in high/heavy traffic areas
- No need to cut mitre joints

### Each OBEX Vinyl Edge Kit Contains:

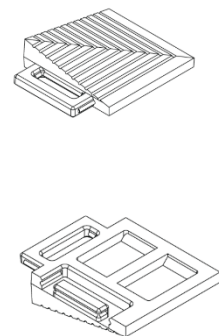
20 Male Pieces



20 Female Pieces

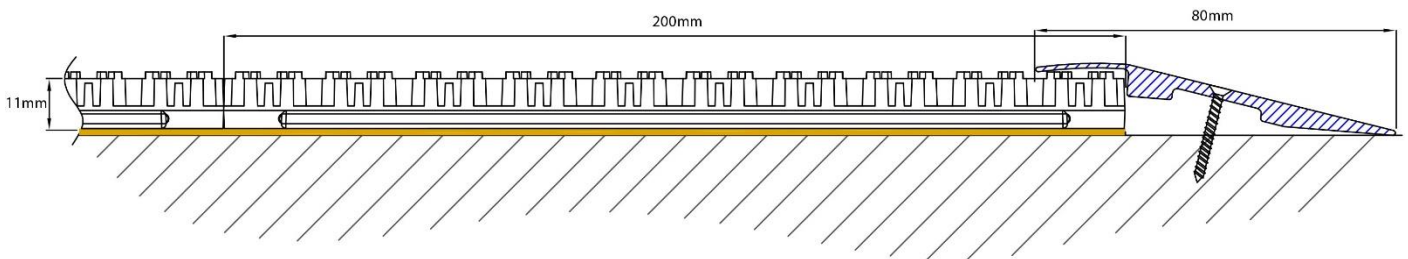


6 Corner Pieces



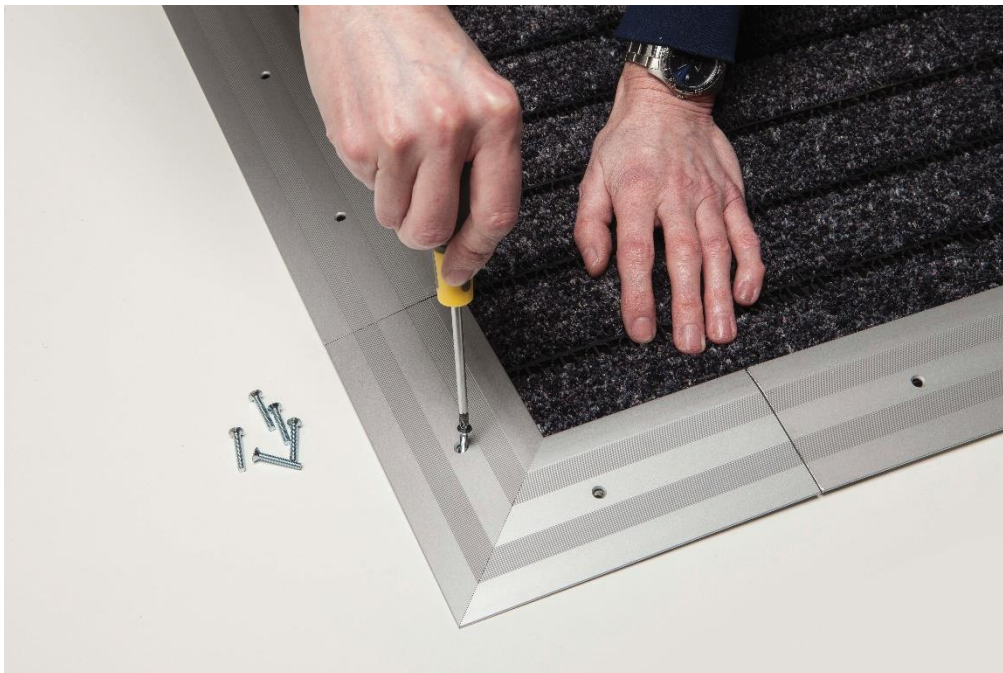
# OBEX™ | Milliken™ Entrance Flooring

## Edging systems - Universal Aluminum edging



- Each piece is 8.85ft. in length
- Each box consists of 10 pieces

The edging rests on top of the edge of the Grids and fixes to the floor, providing the required angle of installation.



1. Cut straight sections to length with a suitable saw. Use a miter block or cutter to create the angle for the edging to join at the corners

2. The edging must be fastened to the subfloor to ensure stability (fastener not included)

**Adhesive Recommendations**

When using the PVC connector edging in high traffic areas it is recommended to glue the underside of the connector to the grids. This will eliminate the opportunity of separation. We recommend a cyanoacrylate glue to be used along the full length of the edging to adhere to the tiles, and on the joins (straight and corners). An alternative glue recommendation is a PVC to PVC adhesive, such as Gorilla Glue. This is supplied with an applicator suited to applying the adhesive.

Manufacture	UZIN	BOSTIK	MAPEI
<b>Release bond</b> (Glue stays soft when dry – allowing easy product release)	Universal tackifier	-	Ultrabond Eco 810
<b>Permanent bond</b> (Glue becomes hard when dry – making product release difficult)	KR430 KE2000S	PowerElastic GreenFusion 2	Ultrabond G 21 Ultrabond Eco 560 Ultrabond G 19

Note: Milliken and Company and its Flooring Division are not responsible for the use and applications of these products, and for potential direct or consequential damage that could occur during or after product installation. Please refer to the adhesive manufacture’s product and safety datasheets for information.

## **Maintenance**

### **Daily Cleaning**

Daily use of a powerful upright vacuum cleaner will remove loose dirt by help of its rotary brush action. An additional benefit of the brush action is to groom the pile, thus helping to reduce pile flattening over time. We do not recommend the use of a suction-only machine (such as a tub vacuum cleaner) because it cannot successfully remove the dirt from the textile strips.

*\*Note: A Bonnet Buffing type machine with rotating discs should not be used.  
This could cause damage to the textile construction.*

### **Periodic Cleaning**

Frequency of cleaning will depend upon the volume of traffic and the level of soiling at the site.

The Open version of the OBEX Grids should be removed from the recessed area and the area should be thoroughly cleaned to remove all grit, soil, and dust. Re-position the Grids into the recess, and vacuum clean as described above in the Daily Cleaning. Deep clean the Grids in place using a hot water extraction machine, paying attention to the textile inserts.

The water temperature should not exceed 122°F.

The Closed version of the OBEX Grids can be cleaned in place when installed in a recess application. It is not necessary to remove these products from the recessed area, as their closed construction will keep dirt on the surface.

For chewing gum removal, we recommend using “Bye Bye Gum,” “Rid-A-Gum,” or similar products with a freezing effect on the gum, making it easier to remove from the OBEX™ Grids.