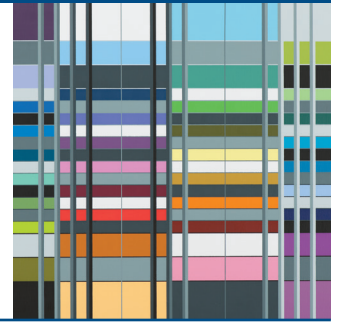


Akustische Werte

COLOUR COMPOSITIONS VOLUME III



Schallabsorptionsgrad (ISO 354)

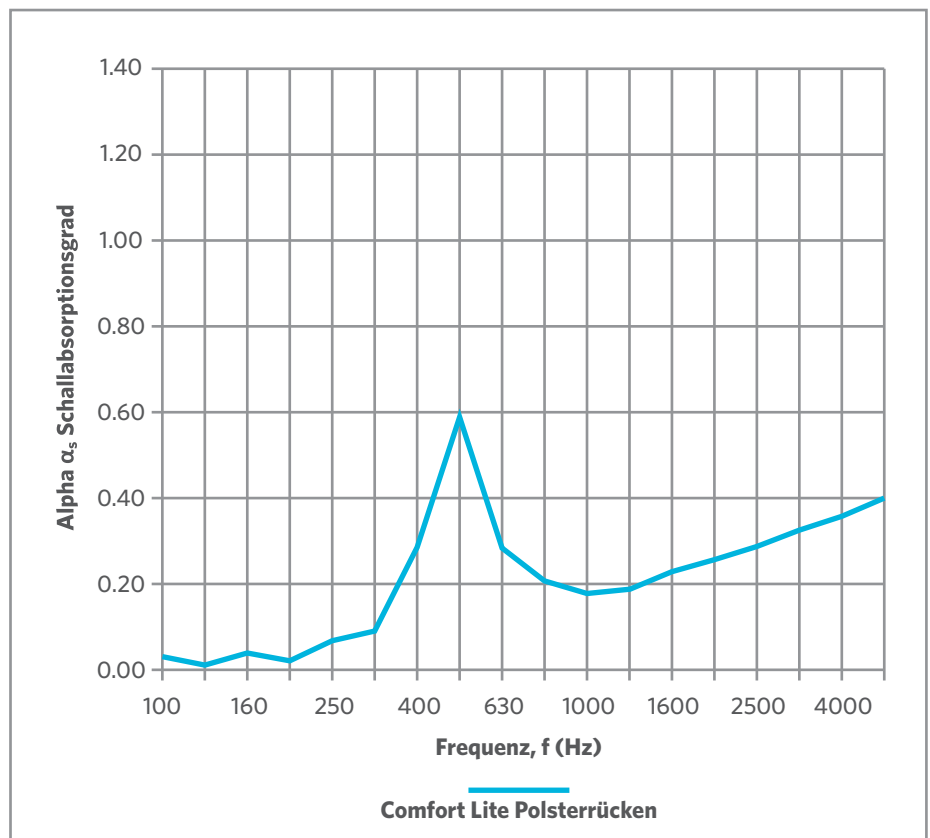
Trittschallverbesserungsmaß (ISO 140-8 / ISO 10140-3)

Colour Compositions Volume III
Comfort Lite Polsterrücken α_w 0.25 Klasse E

Colour Compositions Volume III
Comfort Lite Polsterrücken ΔL_w 31dB

Alpha α_s Schallabsorptionsgrad

| Frequenz (Hz) | Comfort Lite Polsterrücken α_s |
|------------------|---|
| 100 | 0.03 |
| 125 | 0.01 |
| 160 | 0.04 |
| 200 | 0.02 |
| 250 | 0.07 |
| 315 | 0.09 |
| 400 | 0.28 |
| 500 | 0.59 |
| 630 | 0.29 |
| 800 | 0.21 |
| 1000 | 0.18 |
| 1250 | 0.19 |
| 1600 | 0.23 |
| 2000 | 0.26 |
| 2500 | 0.29 |
| 3150 | 0.33 |
| 4000 | 0.36 |
| 5000 | 0.40 |



α_p Werte (Comfort Lite Polsterrücken)

| 125 Hz | 250 Hz | 500 Hz | 1000 Hz | 2000 Hz | 4000 Hz |
|--------|--------|--------|---------|---------|---------|
| 0.05 | 0.05 | 0.40 | 0.20 | 0.25 | 0.35 |

α_w Klasse

| α_w (Gesamtwert) | Klasse |
|----------------------------|--------|
| 0.25 | E |