

**OBEX™**

Milliken

**Entrance Flooring**

**TILE**

*Milliken*™



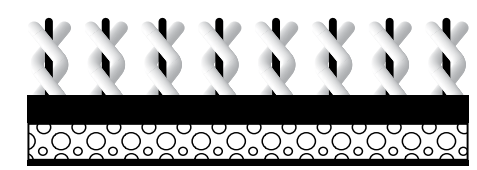


# OBEX™ Tile

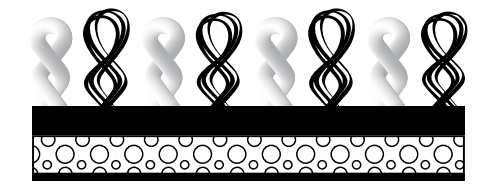
With cut-pile (open) and loop-pile (closed) textile options in multiple patterns and colours, OBEX™ Tiles offer high-performance dirt and moisture collection plus tailored design. All Tiles feature our industry-exclusive cushion backing designed to deliver underfoot comfort, improved acoustics, and moisture management.

ZONE 2 | ZONE 3

MATERIALS



Cut (Z2, Z3)



Loop (Z2, Z3)





▶ Z1: Grid / Vinyl / Open  
 ▶ Z3: Tile / Cut / Cross / Grey

**OBEX™ Cut | Cross | Z2, Z3**



Dark Grey



Grey



Dark Blue



Brown



Red



OBEX™ Cut | Galaxy | Z2, Z3



Dark Grey



Grey



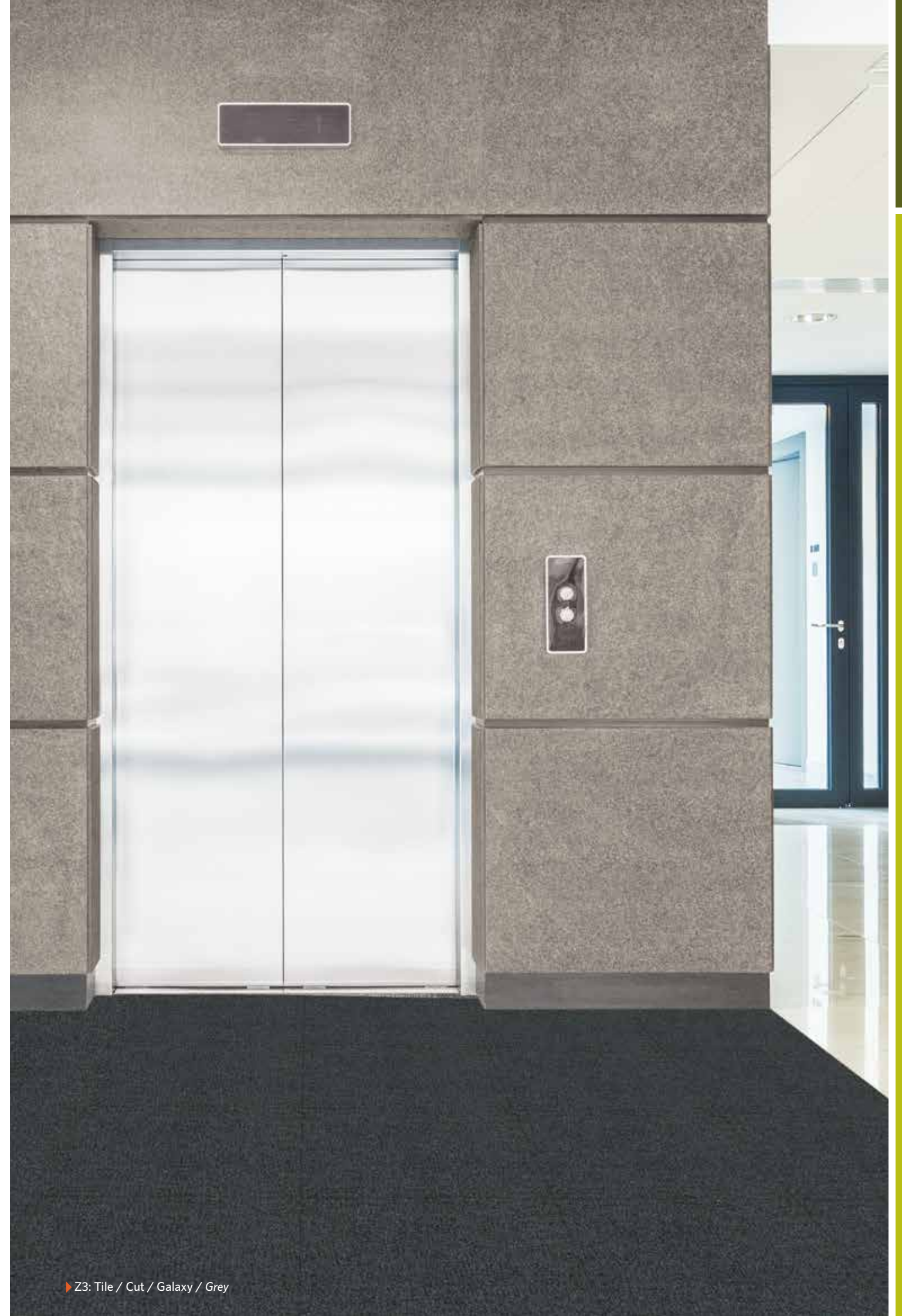
Dark Blue



Brown



Red



Z3: Tile / Cut / Galaxy / Grey



OBEX™ Cut | Thread | Z2, Z3



Dark Grey



Grey



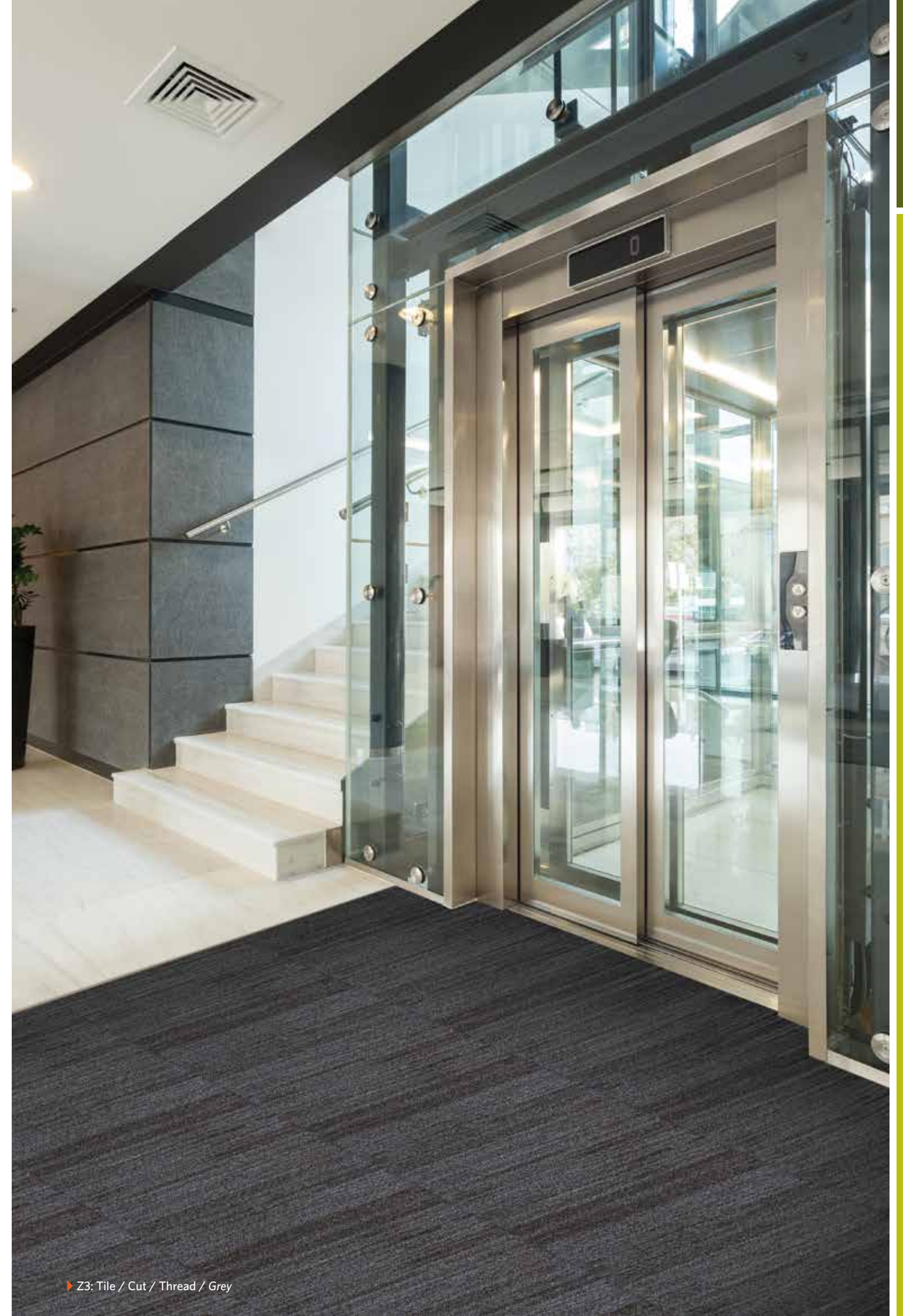
Dark Blue



Brown



Red



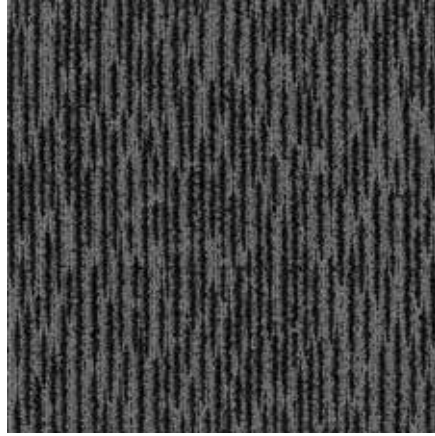
▶ Z3: Tile / Cut / Thread / Grey



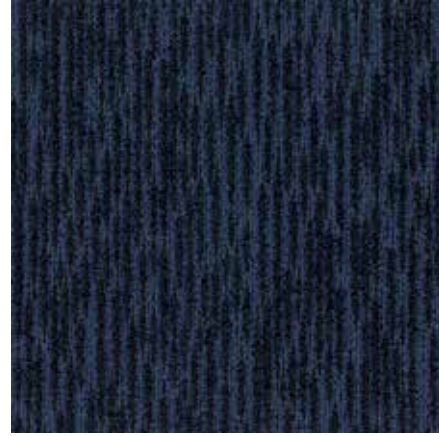
OBEX™ Loop | Bark | Z2, Z3



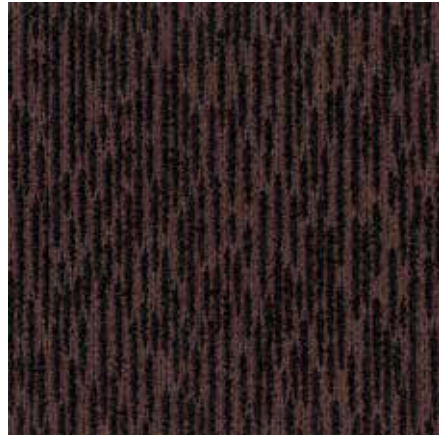
Dark Grey



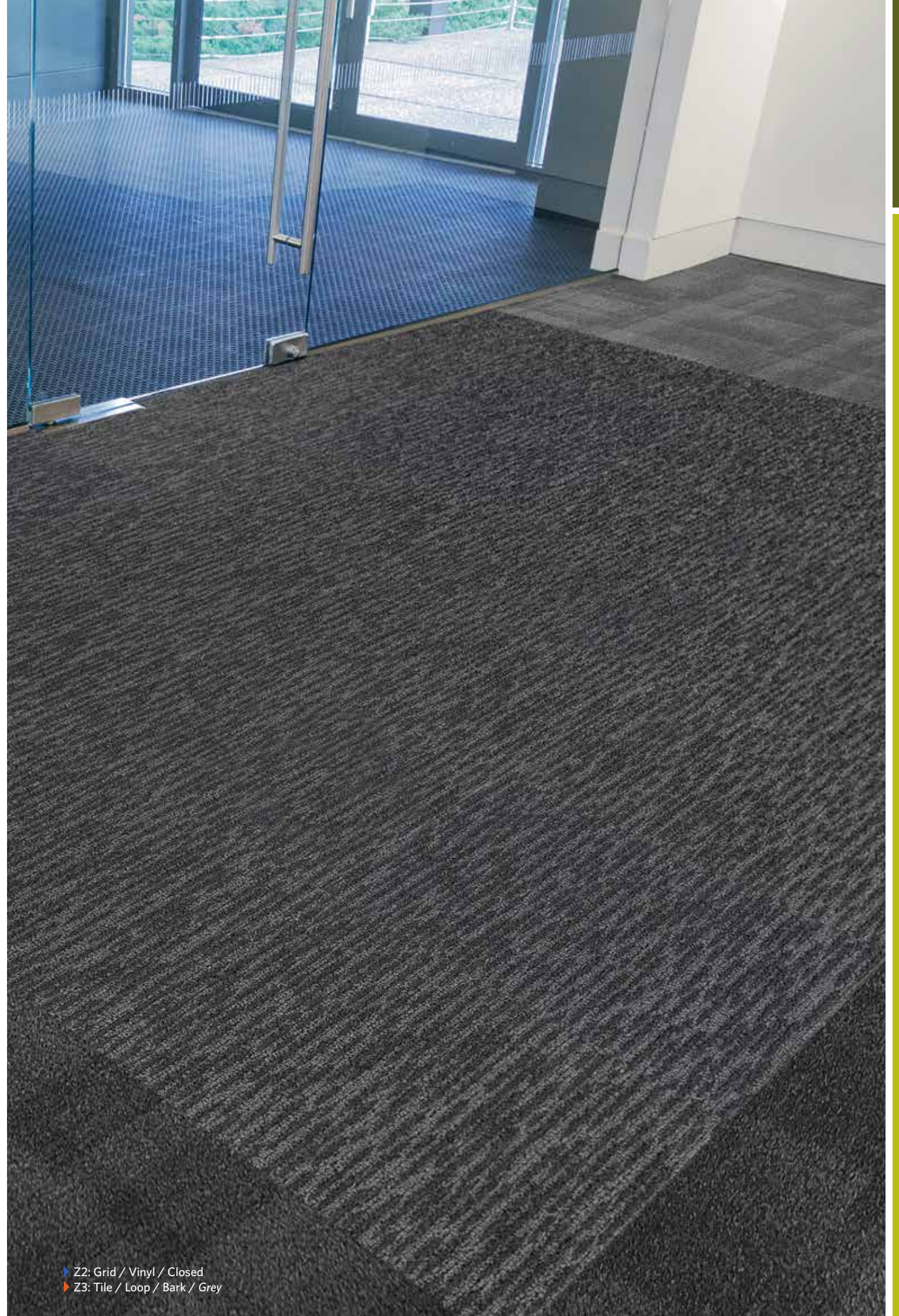
Grey



Dark Blue



Brown



▶ Z2: Grid / Vinyl / Closed  
▶ Z3: Tile / Loop / Bark / Grey





▶ Z3: Tile / Loop / Stack / Dark Blue

OBEX™ Loop | Stack | Z2, Z3



Dark Grey



Grey



Dark Blue



Brown



# Covering the Zones

## Protection from the Outside In

To determine the most effective OBEX™ solution, our team evaluates your building's entry based on three distinct Zones. This process starts at the outside of the building, and addresses the entire pathway through any airlocks, vestibules, and lobby or reception areas. Because every facility is unique, breaking down these Zones helps define where entrance flooring should be installed, as well as what combinations of Forms and Materials will deliver the best protection and performance.

### ZONE 1 | OUTDOORS

**Location:** Outdoor area prior to building's entrance

**Recommendation:** Product with heavy scraping action

**Goal:** Trap grit, heavy dirt particles, and moisture, including snow, salt, and sand

### ZONE 2 | VESTIBULE / AIRLOCK

**Location:** Enclosed entrance of building

**Recommendation:** Dual-action product that combines scraping and absorption

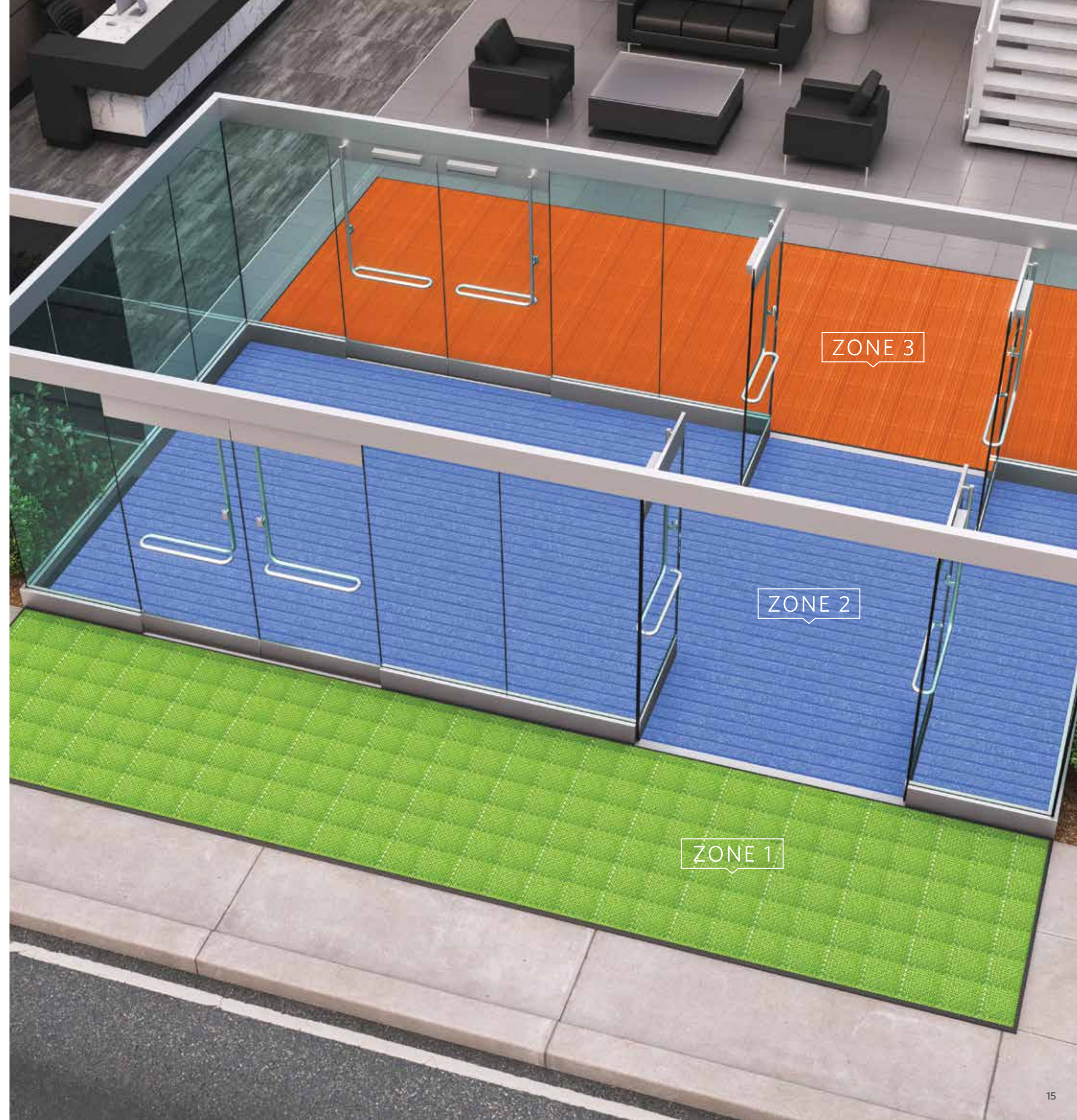
**Goal:** Collect dirt, debris, and moisture

### ZONE 3 | INDOORS

**Location:** Primary area(s) inside building

**Recommendation:** Product with high absorption qualities

**Goal:** Remove remaining moisture and small particles







# Introducing **OBEX VIA**

Our **Variable Installation Approach (VIA)** means you don't have to settle for generic, one-size-fits-all entrance flooring.

OBEX™ VIA is our site-specific analysis that starts with an assessment of your facility's unique environment, specific needs, and challenges.

We then match your requirements with our offering of effective Forms and industry-proven Materials.

Finally, VIA focuses the conversation on your preferences, resulting in a tailored entrance flooring system that delivers both performance and protection.

- O** **Objective - What do you need your entry to do?**  
Factor in variables such as weather conditions and the intensity of foot, rolled, and heavy cart traffic.
- B** **Barrier Level - Where and to what degree do you need protection?**  
Assess each Zone along the entry pathway, including vestibules, lobbies, and transition areas to determine available linear walk-off distance.
- E** **Enhance - What look and style do you want?**  
Review options for colour and pattern, as well as coordination with interior flooring products and any identity branding you may want.
- X** **Execute**  
Based on your answers to the previous questions, we can now identify and recommend the most effective, customised system of OBEX™ Forms and Materials.



# Tile Specifications

## OBEX™ LOOP

**Construction**  
Tufted, Multi-Level Loop

**Textile Yarn Type**  
ECONYL® Solution-Dyed Nylon Type 6  
Solution-Dyed Nylon Monofilament

**Fabric Weight**  
46 g/m<sup>2</sup>

**Nominal Total Weight**  
3,540 g/m<sup>2</sup>

**Nominal Pile Height**  
6.48 mm

**Nominal Total Thickness**  
9.9 mm

**Tile Size**  
50 cm x 50 cm

**Tiles Per Box**  
12 Tiles (3 m<sup>2</sup>)

## OBEX™ CUT

**Construction**  
Tufted, Cut Pile

**Textile Yarn Type**  
ECONYL® regenerated polyamide,  
twisted and heat set multi/  
monofilament dual fibres

**Fabric Weight**  
Approx. 980 g/m<sup>2</sup>

**Total Weight**  
Approx. 4,600 g/m<sup>2</sup>

**Nominal Pile Height**  
Approx. 6.4 mm

**Nominal Total Thickness**  
12 mm

**Tile Size**  
50 cm x 50 cm

**Tiles Per Box**  
16 Tiles (4 m<sup>2</sup>)

# Quick Reference Guide

Form - Material	Zone Application			Dirt/Debris Removal			Moisture Absorption			Installation Approach		
	Z1	Z2	Z3	Good	Better	Best	Good	Better	Best	Recessed	Surface	Wall to Wall
Bar - Mono 11mm	•	•				•				•	•	•
Bar - Mono 16mm	•	•				•				•		
Bar - Cut 11mm		•				•			•	•	•	•
Bar - Cut 16mm		•				•			•	•		
Half Bar - Mono 11mm	•	•				•				•	•	•
Half Bar - Mono 16mm or 22mm	•	•				•				•		
Half Bar - Cut 11mm		•				•			•	•	•	•
Half Bar - Cut 16mm or 22mm		•				•			•	•		
Grid - Vinyl Open 11mm	•				•					•	•	•
Grid - Vinyl Closed 11mm or 16mm		•			•					•	•	•
Grid - Mono Open 11mm	•					•				•	•	•
Grid - Mono Closed 11mm or 16mm		•				•				•	•	•
Grid - Cut Open 11mm		•				•			•	•	•	•
Grid - Cut Closed 11mm or 16mm		•				•			•	•	•	•
Tile - Cut		•	•		•				•	•	•	•
Tile - Loop		•	•	•				•		•	•	•
Roll - Cut		•	•		•				•	•	•	•
Mat - Mono	•	•				•					•	
Mat - Cut		•	•		•				•		•	



Milliken's integrated OBEX™ system of Forms and Materials optimises safety, wellness, and design from the outside in.

[millikenfloors.com/OBEX](http://millikenfloors.com/OBEX)



## OBEX VIA™

Download the app today.



Augmented Reality



Product Catalog



Project Management

Milliken™